

### Vehicle Inspection Report

Date Inspected: 28/03/2025 10:21

**Reg:** CE61FUA

**VIN:** WDD1724482F024371

### NAMA Grading



Grade

**3**

Appraised By: Eastbourne Car Auctions

### General Details

<b>Make</b>	MERCEDES-BENZ	<b>Body Type</b>	Convertible	<b>Doors</b>	2
<b>Model</b>	SLK200 AMG SPORT ED125 BL - 1796cc	<b>Fuel Type</b>	Petrol	<b>Colour</b>	Silver
<b>Mileage</b>	101,592 miles	<b>Transmission</b>	Auto	<b>Year of MFR</b>	2011
				<b>Date First Reg</b>	15/09/2011

### Miscellaneous

<b>V5 Location</b>	
<b>No. Keys</b>	2

### Tyres & Wheels

<b>OSF Depth</b>	mm	<b>Alloys</b>	
<b>NSF Depth</b>	mm	<b>Tools</b>	
<b>OSR Depth</b>	mm	<b>Spare</b>	
<b>NSR Depth</b>	mm		

### Interior Condition

<b>Carpets</b>	Average
<b>Upholstery</b>	Average
<b>Seats</b>	Average
<b>Parcel Shelf</b>	No
<b>Odour</b>	No
<b>Comments</b>	seats heavily worn

### Service History

<b>Service No</b>	
<b>History</b>	
<b>Stamps</b>	

### Extras

<b>Metallic Paint</b>	Yes	<b>Central Locking</b>	Yes	<b>Interior</b>	Leather	<b>Electric Seats</b>	Yes
<b>Air Conditioning</b>	Yes	<b>Sun Roof</b>	Yes	<b>Elec Windows</b>	2	<b>Heated Seats</b>	Yes
<b>Stereo</b>	Radio	<b>Sat Nav</b>	Built In	<b>Cruise</b>	Yes	<b>Xenons</b>	No
<b>Keyless Entry</b>	No	<b>Towbar</b>	No	<b>Number of Seats</b>	2	<b>Parking Sensors</b>	Rear
<b>Phone Kit</b>	Yes	<b>Drv Airbag</b>	Yes	<b>Reversing Camera</b>	Yes	<b>EML</b>	No

**Bumper  
Rear**

Scratched

Over  
25mm Not  
Thru Paint

Machine  
Polish



**Bumper  
Rear**

Scratched

25 to  
100mm  
Thru Paint

Smart  
Repair

**Boot Lid**

Scratched

Over  
25mm Not  
Thru Paint

Machine  
Polish



**Qtr Panel  
nsr**

Dented

2 Or Less  
UpTo  
10mm

Smart  
Repair

**Door nsf**

Scratched

Over  
25mm Not  
Thru Paint

Machine  
Polish

**Wing nsf**

Scratched

Over  
25mm Not  
Thru Paint

Machine  
Polish



**Wing nsf**

Dented

Between  
10mm +  
30mm

Smart  
Repair



**Bumper  
Front**

Dented

With Paint  
Damage

Repair  
and  
Refinish

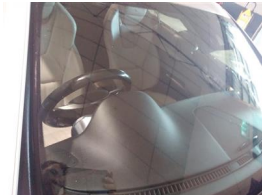


**Bonnet**

Chipped

1 To 5

Smart  
Repair



**Screen  
Front**

Chipped

UpTo  
10mm

Smart  
Repair



**Sill Panel  
Trim os**

Broken

Needs  
Replaced

Replace



**Wing osf**

Chipped

1 To 5

Smart  
Repair

**Door osf**

Scratched

Over  
25mm Not  
Thru Paint

Machine  
Polish

**Door osf**

Chipped

Multiple  
Chips

Refinish



**Qtr Panel  
osr**

Scratched

UpTo  
25mm  
Thru Paint

Smart  
Repair

Damage Lines			
Component	Condition	Severity	Repair
Bumper Rear	Scratched	Over 25mm Not Thru Paint	Machine Polish
Bumper Rear	Scratched	25 to 100mm Thru Paint	Smart Repair
Boot Lid	Scratched	Over 25mm Not Thru Paint	Machine Polish
Qtr Panel nsr	Dented	2 Or Less UpTo 10mm	Smart Repair
Door nsf	Scratched	Over 25mm Not Thru Paint	Machine Polish
Wing nsf	Scratched	Over 25mm Not Thru Paint	Machine Polish
Wing nsf	Dented	Between 10mm + 30mm	Smart Repair
Bumper Front	Dented	With Paint Damage	Repair and Refinish
Bonnet	Chipped	1 To 5	Smart Repair
Screen Front	Chipped	UpTo 10mm	Smart Repair
Sill Panel Trim os	Broken	Replace	Replace
Wing osf	Chipped	1 To 5	Smart Repair
Door osf	Scratched	Over 25mm Not Thru Paint	Machine Polish
Door osf	Chipped	Multiple Chips	Refinish
Qtr Panel osr	Scratched	UpTo 25mm Thru Paint	Smart Repair

Vehicle Splat

Splat Key

**S1**  
Scratch/Paint defect to 30mm

**S2**  
Scratch/Paint defect 30-100mm

**D1**  
Dent/damage under 30mm

**D3**  
Dent/damage 100mm +

**C2**  
Multiple Chips

Comments
<p>£100 ADDITIONAL FEE</p> <p><b>No mechanical inspection has been undertaken on this vehicle, any mechanical items noted are for reference only and cannot be relied on.</b></p>