

### Vehicle Inspection Report

Date Inspected: 15/04/2025 08:30

**Reg:** LD17BZM

**VIN:** KNABX511LHT369613

### NAMA Grading



Grade

**4**

Appraised By: Eastbourne Car Auctions

### General Details

<b>Make</b>	KIA	<b>Body Type</b>	Hatchback	<b>Doors</b>	5
<b>Model</b>	PICANTO SE ISG - 998cc	<b>Fuel Type</b>	Petrol	<b>Colour</b>	Black
<b>Mileage</b>	89,453 miles	<b>Transmission</b>	Manual	<b>Year of MFR</b>	2017
		<b>Gears</b>	5	<b>Date First Reg</b>	25/03/2017

### Miscellaneous

<b>V5 Location</b>	Here
<b>MOT Location</b>	Here
<b>MOT Expiry</b>	24/03/2026
<b>No. Keys</b>	2

### Tyres & Wheels

<b>OSF Depth</b>	4 mm	<b>Alloys</b>	Yes
<b>NSF Depth</b>	4 mm	<b>Alloys That Need Refurb</b>	4
<b>OSR Depth</b>	4 mm	<b>Tools</b>	No
<b>NSR Depth</b>	4 mm	<b>Spare</b>	Inflation Kit

### Interior Condition

<b>Carpets</b>	Average
<b>Upholstery</b>	Average
<b>Seats</b>	Average
<b>Parcel Shelf</b>	Yes
<b>Odour</b>	No

### Service History

**Service History Stamps**

Yes

### Extras

<b>Metallic Paint</b>	Yes	<b>Central Locking</b>	Yes	<b>Interior</b>	Cloth	<b>Electric Seats</b>	No
<b>Air Conditioning</b>	Yes	<b>Sun Roof</b>	No	<b>Elec Windows</b>	4	<b>Heated Seats</b>	No
<b>Stereo</b>	Radio	<b>Sat Nav</b>	No	<b>Cruise</b>	No	<b>Xenons</b>	No
<b>Keyless Entry</b>	No	<b>Towbar</b>	No	<b>Number of Seats</b>	5	<b>Parking Sensors</b>	Rear
<b>Phone Kit</b>	Yes	<b>Drv Airbag</b>	Yes	<b>Reversing Camera</b>	No	<b>EML</b>	No

### Damage Assessment

#### Bumper Rear

Scratched

Over 25mm Not Thru Paint

Machine Polish

#### Qtr Panel nsr

Scratched

Over



#### Bumper Rear

Chipped

Multiple Chips

Smart Repair

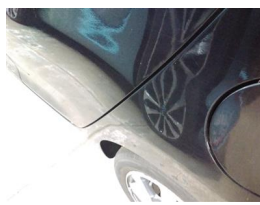
#### Boot Lid

Scratched

Over 25mm Not Thru Paint

Machine Polish

25mm Not  
Thru Paint  
  
Machine  
Polish



**Qtr Panel  
nsr**  
  
Dented  
  
2 Or Less  
UpTo  
10mm  
  
Smart  
Repair



**Door nsr**  
  
Chipped  
  
Multiple  
Chips  
  
Refinish



**Roof**  
  
Scratched  
  
Over  
25mm  
Thru Paint  
  
Refinish



**Door nsf**  
  
Dented  
  
With Paint  
Damage  
  
Repair  
and  
Refinish



**Wing nsf**  
  
Scratched  
  
Over  
25mm Not  
Thru Paint  
  
Machine  
Polish



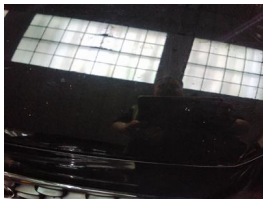
**Wing nsf**  
  
Chipped  
  
1 To 5  
  
Smart  
Repair



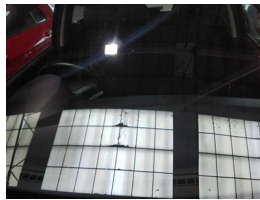
**Bumper  
Front**  
  
Scratched  
  
Over  
25mm Not  
Thru Paint  
  
Machine  
Polish



**Bumper  
Front**  
  
Chipped  
  
Multiple  
Chips  
  
Smart  
Repair



**Bonnet**  
  
Chipped  
  
Multiple  
Chips  
  
Refinish



**Screen  
Front**  
  
Chipped  
  
UpTo  
10mm  
  
Smart  
Repair



**Wing osf**  
  
Scratched  
  
Over  
25mm Not  
Thru Paint  
  
Machine  
Polish



**Door osf**  
  
Poor  
Previous  
Repair  
  
Poor Paint  
  
Refinish

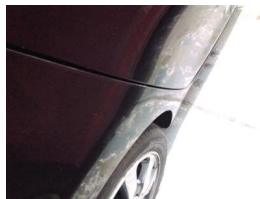


**Door osr**  
  
Scratched  
  
Over  
25mm Not  
Thru Paint  
  
Machine  
Polish



**Door osr**  
  
Chipped  
  
1 To 5  
  
Smart  
Repair

**Qtr Panel  
osr**  
  
Scratched  
  
Over  
25mm Not  
Thru Paint  
  
Machine  
Polish



**Qtr Panel  
osr**  
  
Dented  
  
Between  
10mm +  
30mm  
  
Smart  
Repair

Damage Lines			
Component	Condition	Severity	Repair
Bumper Rear	Scratched	Over 25mm Not Thru Paint	Machine Polish
Bumper Rear	Chipped	Multiple Chips	Smart Repair
Boot Lid	Scratched	Over 25mm Not Thru Paint	Machine Polish
Qtr Panel nsr	Scratched	Over 25mm Not Thru Paint	Machine Polish
Qtr Panel nsr	Dented	2 Or Less UpTo 10mm	Smart Repair
Door nsr	Chipped	Multiple Chips	Refinish
Roof	Scratched	Over 25mm Thru Paint	Refinish
Door nsf	Dented	With Paint Damage	Repair and Refinish
Wing nsf	Scratched	Over 25mm Not Thru Paint	Machine Polish
Wing nsf	Chipped	1 To 5	Smart Repair
Bumper Front	Scratched	Over 25mm Not Thru Paint	Machine Polish
Bumper Front	Chipped	Multiple Chips	Smart Repair
Bonnet	Chipped	Multiple Chips	Refinish
Screen Front	Chipped	UpTo 10mm	Smart Repair
Wing osf	Scratched	Over 25mm Not Thru Paint	Machine Polish
Door osf	Poor Previous Repair	Poor Paint	Refinish
Door osr	Scratched	Over 25mm Not Thru Paint	Machine Polish
Door osr	Chipped	1 To 5	Smart Repair
Qtr Panel osr	Scratched	Over 25mm Not Thru Paint	Machine Polish
Qtr Panel osr	Dented	Between 10mm + 30mm	Smart Repair

Vehicle Splat

FRONT

Splat Key

**S3**  
Scratch/Paint defect 100m +

**D1**  
Dent/damage under 30mm

**D2**  
Dent/damage 30-100mm

**C2**  
Multiple Chips

**PP**  
Poor Previous

Comments
£100 ADDITIONAL FEE Last Service - 15/03/2025 at 88,918 miles (9 MAIN DEALER SERVICES)
vibration at idle
<b>No mechanical inspection has been undertaken on this vehicle, any mechanical items noted are for reference only and cannot be relied on.</b>