

Vehicle Inspection Report

Date Inspected: 03/02/2025 15:39

Reg: VK16NLY
VIN: SALVA2AN3GH126527

NAMA Grading



Grade
3

Appraised By: Eastbourne Car Auctions

General Details

Make	LAND ROVER	Body Type	Estate	Doors	5
Model	R ROVER EVOQUE SE TECH TD - 1999cc	Fuel Type	Diesel	Colour	Blue
Mileage	94,237 miles	Transmission	Auto	Year of MFR	2016
				Date First Reg	31/03/2016

Miscellaneous

V5 Location	Here
MOT Location	Here
MOT Expiry	30/09/2025
No. Keys	2

Tyres & Wheels

OSF Depth	5 mm	Alloys	Yes
NSF Depth	5 mm	Alloys That Need Refurb	4
OSR Depth	5 mm	Tools	No
NSR Depth	5 mm	Spare	No Spare

Interior Condition

Carpets	Average
Upholstery	Average
Seats	Average
Parcel Shelf	Yes
Odour	No
Comments	seats worn

Service History

Service Yes
History
Stamps

Extras

Metallic Paint	Yes	Central Locking	Yes	Interior	Leather	Electric Seats	Yes
Air Conditioning	Yes	Sun Roof	Yes	Elec Windows	4	Heated Seats	Yes
Stereo	Radio	Sat Nav	Built In	Cruise	Yes	Xenons	No
Keyless Entry	No	Towbar	No	Number of Seats	5	Parking Sensors	Front & Rear
Phone Kit	Yes	Drv Airbag	Yes	Reversing Camera	No	EML	Yes

Damage Assessment

Boot Lid
Scratched
Over
25mm Not
Thru Paint
Machine
Polish



Boot Lid
Dented
Between
10mm +
30mm
Smart
Repair

Qtr Panel
nsr
Scratched

Bumper
Rear
Scratched
Over
25mm Not
Thru Paint
Machine
Polish

Door nsr
Scratched
Over



**Bumper
Rear
Moulding**

Scuffed
(Unpainted)

Over
100mm

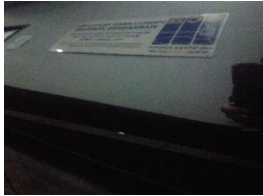
Smart
Repair

Over
25mm Not
Thru Paint

Machine
Polish

25mm Not
Thru Paint

Machine
Polish



Door nsr

Chipped

1 To 5

Smart
Repair

Door nsf

Scratched

Over
25mm Not
Thru Paint

Machine
Polish



Door nsf

Dented

Over 2
UpTo
10mm

Smart
Repair

Wing nsf

Scratched

Over
25mm Not
Thru Paint

Machine
Polish

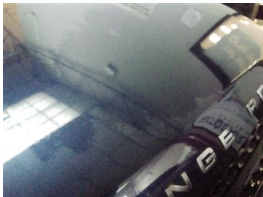


**Bumper
Front**

Scratched

Over
100mm
Thru Paint

Refinish



Bonnet

Dented

Over
30mm

Repair
and
Refinish

Wing osf

Scratched

Over
25mm Not
Thru Paint

Machine
Polish



Door osf

Dented

With Paint
Damage

Repair
and
Refinish



Door osr

Chipped

1 To 5

Smart
Repair

Door osr

Scratched

Over
25mm Not
Thru Paint

Machine
Polish

**Qtr Panel
osr**

Scratched

Over
25mm Not
Thru Paint

Machine
Polish

Damage Lines			
Component	Condition	Severity	Repair
Boot Lid	Scratched	Over 25mm Not Thru Paint	Machine Polish
Boot Lid	Dented	Between 10mm + 30mm	Smart Repair
Bumper Rear	Scratched	Over 25mm Not Thru Paint	Machine Polish
Bumper Rear Moulding	Scuffed (Unpainted)	Over 100mm	Smart Repair
Qtr Panel nsr	Scratched	Over 25mm Not Thru Paint	Machine Polish
Door nsr	Scratched	Over 25mm Not Thru Paint	Machine Polish
Door nsr	Chipped	1 To 5	Smart Repair
Door nsf	Scratched	Over 25mm Not Thru Paint	Machine Polish
Door nsf	Dented	Over 2 UpTo 10mm	Smart Repair
Wing nsf	Scratched	Over 25mm Not Thru Paint	Machine Polish
Bumper Front	Scratched	Over 100mm Thru Paint	Refinish
Bonnet	Dented	Over 30mm	Repair and Refinish
Wing osf	Scratched	Over 25mm Not Thru Paint	Machine Polish
Door osf	Dented	With Paint Damage	Repair and Refinish
Door osr	Chipped	1 To 5	Smart Repair
Door osr	Scratched	Over 25mm Not Thru Paint	Machine Polish
Qtr Panel osr	Scratched	Over 25mm Not Thru Paint	Machine Polish

Vehicle Splat

Splat Key

S3
Scratch/Paint defect 100m +

D1
Dent/damage under 30mm

D2
Dent/damage 30-100mm

D3
Dent/damage 100mm +

C2
Multiple Chips

SC
Scuff

Comments
<p>£100 ADDITIONAL FEE. EML on. Last Service - 26/09/2018 at 41,230 miles (2 main dealer services)</p> <p>No mechanical inspection has been undertaken on this vehicle, any mechanical items noted are for reference only and cannot be relied on.</p>