

Vehicle Inspection Report

Date Inspected: 14/04/2025 12:19

Reg: WU17YKB

VIN: JMAXDGG2WGZ012147

NAMA Grading



Grade

4

Appraised By: Eastbourne Car Auctions

General Details

Make	MITSUBISHI	Body Type	Estate	Doors	5
Model	OUTLANDER GX 4H PHEV S-A - 1998cc	Fuel Type	Hybrid	Colour	Grey
Mileage	79,722 miles	Transmission	Auto	Year of MFR	2017
				Date First Reg	01/03/2017

Miscellaneous

V5 Location	Here
MOT Location	Here
MOT Expiry	03/03/2026
No. Keys	2

Tyres & Wheels

OSF Depth	5 mm	Alloys	Yes
NSF Depth	5 mm	Alloys That Need Refurb	4
OSR Depth	4 mm	Tools	No
NSR Depth	5 mm	Spare	No Spare

Interior Condition

Carpets	Average
Upholstery	Average
Seats	Poor
Parcel Shelf	No
Odour	No
Comments	drivers seat torn

Service History

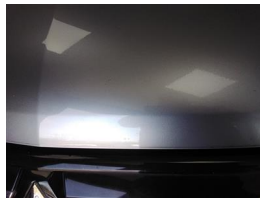
Service History	Yes
Stamps	

Extras

Metallic Paint	Yes	Central Locking	Yes	Interior	Leather	Electric Seats	Yes
Air Conditioning	Yes	Sun Roof	Yes	Elec Windows	4	Heated Seats	Yes
Stereo	Radio	Sat Nav	Built In	Cruise	Yes	Xenons	No
Keyless Entry	Yes	Towbar	Yes	Number of Seats	5	Parking Sensors	No
Phone Kit	Yes	Drv Airbag	Yes	Reversing Camera	Yes	EML	No



Bumper Front
Scratched
Over 100mm Thru Paint
Refinish



Bonnet
Dented
Hail - Moderate
Repair and Refinish

Wing osf
Scratched
Over 25mm Not Thru Paint
Machine Polish



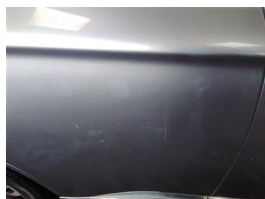
Wing osf
Chipped 1 To 5
Smart Repair



Screen Front
Chipped UpTo 10mm
Smart Repair



Door osf
Chipped Multiple Chips
Refinish



Door osr
Scratched Over 25mm Thru Paint
Refinish



Qtr Panel osr
Scratched Over 25mm Thru Paint
Refinish



Bumper Rear
Scratched Over 100mm Thru Paint
Refinish



Boot Lid
Dented With Paint Damage
Repair and Refinish



Qtr Panel nsr
Dented 2 Or Less UpTo 10mm
Smart Repair

Door nsr
Scratched Over 25mm Not Thru Paint
Machine Polish

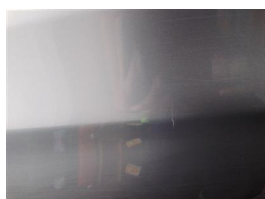


Door nsr
Chipped 1 To 5
Smart Repair



Door nsf
Scratched Over 25mm Thru Paint
Refinish

Wing nsf
Scratched Over 25mm Not Thru Paint
Machine Polish



Wing nsf
Chipped 1 To 5
Smart Repair



Seat Base Cover osf
Torn Over 3mm
Replace

Damage Lines			
Component	Condition	Severity	Repair
Bumper Front	Scratched	Over 100mm Thru Paint	Refinish
Bonnet	Dented	Hail - Moderate	Repair and Refinish
Wing osf	Scratched	Over 25mm Not Thru Paint	Machine Polish
Wing osf	Chipped	1 To 5	Smart Repair
Screen Front	Chipped	UpTo 10mm	Smart Repair
Door osf	Chipped	Multiple Chips	Refinish
Door osr	Scratched	Over 25mm Thru Paint	Refinish
Qtr Panel osr	Scratched	Over 25mm Thru Paint	Refinish
Bumper Rear	Scratched	Over 100mm Thru Paint	Refinish
Boot Lid	Dented	With Paint Damage	Repair and Refinish
Qtr Panel nsr	Dented	2 Or Less UpTo 10mm	Smart Repair
Door nsr	Scratched	Over 25mm Not Thru Paint	Machine Polish
Door nsr	Chipped	1 To 5	Smart Repair
Door nsf	Scratched	Over 25mm Thru Paint	Refinish
Wing nsf	Scratched	Over 25mm Not Thru Paint	Machine Polish
Wing nsf	Chipped	1 To 5	Smart Repair
Seat Base Cover osf	Torn	Over 3mm	Replace

Vehicle Splat

Splat Key

S3
Scratch/Paint defect 100m +

D1
Dent/damage under 30mm

D2
Dent/damage 30-100mm

C2
Multiple Chips

Comments

£65 ADDITIONAL FEE. Last Service - 16/04/2024 at 68,533 miles (4 services (1 main dealer))

bonnet misaligned

No mechanical inspection has been undertaken on this vehicle, any mechanical items noted are for reference only and cannot be relied on.