

Vehicle Inspection Report

Date Inspected: 15/04/2025 13:29

Reg: RJ60HZC

VIN: SHSRE5870AU021250

NAMA Grading



Grade

4

Appraised By: Eastbourne Car Auctions

General Details

Make	HONDA	Body Type	Estate	Doors	5
Model	CR-V EX I-VTEC AUTO - 1997cc	Fuel Type	Petrol	Colour	Silver
Mileage	122,422 miles	Transmission	Auto	Year of MFR	2010
				Date First Reg	13/12/2010

Miscellaneous

V5 Location	Here
MOT Location	Here
MOT Expiry	07/10/2025
No. Keys	2

Tyres & Wheels

OSF Depth	4 mm	Alloys	Yes
NSF Depth	4 mm	Alloys That Need Refurb	4
OSR Depth	4 mm	Tools	No
NSR Depth	4 mm	Spare	Space Saver

Interior Condition

Carpets	Average
Upholstery	Average
Seats	Average
Parcel Shelf	Yes
Odour	No

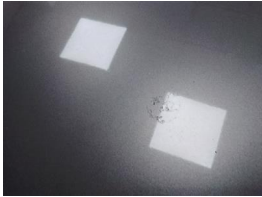
Service History

Service History Stamps

Extras

Metallic Paint	Yes	Central Locking	Yes	Interior	Leather	Electric Seats	Yes
Air Conditioning	Yes	Sun Roof	Yes	Elec Windows	4	Heated Seats	No
Stereo	Radio	Sat Nav	Built In	Cruise	Yes	Xenons	No
Keyless Entry	No	Towbar	No	Number of Seats	5	Parking Sensors	Front & Rear
Phone Kit	Yes	Drv Airbag	Yes	Reversing Camera	Yes	EML	No

Damage Assessment



Bonnet
Dented
With Paint Damage
Repair and Refinish

Wing osf
Scratched
Over 25mm Not

Bumper Front
Scratched
Over 25mm Not Thru Paint
Machine Polish



Bumper Front
Chipped
Multiple Chips
Smart Repair

Thru Paint
Machine
Polish



Wing osf
Chipped
1 To 5
Smart
Repair



Screen Front
Chipped
UpTo
10mm
Smart
Repair

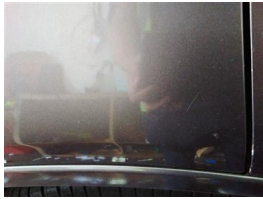


Door osf
Chipped
Multiple
Chips
Refinish



Door osr
Chipped
Multiple
Chips
Refinish

Qtr Panel osr
Scratched
Over
25mm Not
Thru Paint
Machine
Polish



Qtr Panel osr
Chipped
1 To 5
Smart
Repair



Bumper Rear
Scratched
Over
100mm
Thru Paint
Refinish

Boot Lid
Scratched
Over
25mm Not
Thru Paint
Machine
Polish

Boot Lid
Chipped
1 To 5
Smart
Repair

Qtr Panel nsr
Scratched
Over
25mm Not
Thru Paint
Machine
Polish



Qtr Panel nsr
Chipped
1 To 5
Smart
Repair

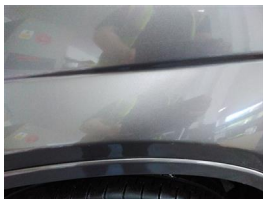


Door nsr
Chipped
Multiple
Chips
Refinish



Door nsf
Dented
With Paint
Damage
Repair
and
Refinish

Wing nsf
Scratched
Over
25mm Not
Thru Paint
Machine
Polish



Wing nsf
Chipped
1 To 5
Smart
Repair

Damage Lines			
Component	Condition	Severity	Repair
Bonnet	Dented	With Paint Damage	Repair and Refinish
Bumper Front	Scratched	Over 25mm Not Thru Paint	Machine Polish
Bumper Front	Chipped	Multiple Chips	Smart Repair
Wing osf	Scratched	Over 25mm Not Thru Paint	Machine Polish
Wing osf	Chipped	1 To 5	Smart Repair
Screen Front	Chipped	UpTo 10mm	Smart Repair
Door osf	Chipped	Multiple Chips	Refinish
Door osr	Chipped	Multiple Chips	Refinish
Qtr Panel osr	Scratched	Over 25mm Not Thru Paint	Machine Polish
Qtr Panel osr	Chipped	1 To 5	Smart Repair
Bumper Rear	Scratched	Over 100mm Thru Paint	Refinish
Boot Lid	Scratched	Over 25mm Not Thru Paint	Machine Polish
Boot Lid	Chipped	1 To 5	Smart Repair
Qtr Panel nsr	Scratched	Over 25mm Not Thru Paint	Machine Polish
Qtr Panel nsr	Chipped	1 To 5	Smart Repair
Door nsr	Chipped	Multiple Chips	Refinish
Door nsf	Dented	With Paint Damage	Repair and Refinish
Wing nsf	Scratched	Over 25mm Not Thru Paint	Machine Polish
Wing nsf	Chipped	1 To 5	Smart Repair

[illegible]

Splat Key

S3
Scratch/Paint defect 100m +

D2
Dent/damage 30-100mm

D3
Dent/damage 100mm +

C2
Multiple Chips

Comments

£100 ADDITIONAL FEE. Input error on MOT history in 2015. Last Service - 16/04/2024 at 116,865 miles

vibration at idle and sun roof cracked

No mechanical inspection has been undertaken on this vehicle, any mechanical items noted are for reference only and cannot be relied on.