

Vehicle Inspection Report

Date Inspected: 22/04/2025 12:25

Reg: RO59JYW

VIN: MA3GFC31S00143550

NAMA Grading



Grade

3

Appraised By: Eastbourne Car Auctions

General Details

Make	SUZUKI	Body Type	Hatchback	Doors	5
Model	ALTO SZ4 - 996cc	Fuel Type	Petrol	Colour	Silver
Mileage	75,532 miles	Transmission	Manual	Year of MFR	2009
		Gears	5	Date First Reg	03/10/2009

Miscellaneous

V5 Location	
No. Keys	2

Tyres & Wheels

OSF Depth	4 mm	Alloys	Yes
NSF Depth	4 mm	Alloys That Need Refurb	4
OSR Depth	5 mm	Tools	No
NSR Depth	5 mm	Spare	Space Saver

Interior Condition

Carpets	Average
Upholstery	Average
Seats	Average
Parcel Shelf	No
Odour	No

Service History

Service No
History
Stamps

Extras

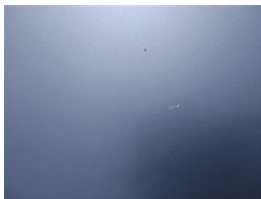
Metallic Paint	Yes	Central Locking	Yes	Interior	Cloth	Electric Seats	No
Air Conditioning	Yes	Sun Roof	No	Elec Windows	2	Heated Seats	No
Stereo	Radio	Sat Nav	No	Cruise	No	Xenons	No
Keyless Entry	No	Towbar	No	Number of Seats	4	Parking Sensors	No
Phone Kit	No	Drv Airbag	Yes	Reversing Camera	No	EML	No

Damage Assessment



Bumper Front

Poor Previous Repair
Poor Paint Refinish



Bonnet

Chipped
1 To 5
Smart Repair

Wing nsf

Scratched
Over 25mm Not Thru Paint
Machine Polish

Door nsf

Scratched
Over 25mm Not Thru Paint



Wing nsf
Chipped
1 To 5
Smart
Repair



Screen Front
Chipped
UpTo
10mm
Smart
Repair

Machine
Polish



Door nsf
Chipped
1 To 5
Smart
Repair

Door nsr
Scratched
Over
25mm Not
Thru Paint
Machine
Polish



Door nsr
Chipped
1 To 5
Smart
Repair



Door nsr
Dented
Between
10mm +
30mm
Smart
Repair



Qtr Panel nsr
Scratched
Over
25mm
Thru Paint
Refinish



Bumper Rear
Poor
Previous
Repair
Paint
Flake
Refinish

Qtr Panel osr
Scratched
Over
25mm Not
Thru Paint
Machine
Polish

Door osr
Scratched
Over
25mm Not
Thru Paint
Machine
Polish



Door osr
Chipped
1 To 5
Smart
Repair

Door osf
Scratched
Over
25mm Not
Thru Paint
Machine
Polish



Door osf
Chipped
1 To 5
Smart
Repair

Wing osf
Scratched
Over
25mm Not
Thru Paint
Machine
Polish



Bumper Rear
Poor
Previous
Repair
Poor Paint
Refinish

Damage Lines			
Component	Condition	Severity	Repair
Bumper Front	Poor Previous Repair	Poor Paint	Refinish
Bonnet	Chipped	1 To 5	Smart Repair
Wing nsf	Scratched	Over 25mm Not Thru Paint	Machine Polish
Wing nsf	Chipped	1 To 5	Smart Repair
Screen Front	Chipped	UpTo 10mm	Smart Repair
Door nsf	Scratched	Over 25mm Not Thru Paint	Machine Polish
Door nsf	Chipped	1 To 5	Smart Repair
Door nsr	Scratched	Over 25mm Not Thru Paint	Machine Polish
Door nsr	Chipped	1 To 5	Smart Repair
Door nsr	Dented	Between 10mm + 30mm	Smart Repair
Qtr Panel nsr	Scratched	Over 25mm Thru Paint	Refinish
Bumper Rear	Poor Previous Repair	Paint Flake	Refinish
Qtr Panel osr	Scratched	Over 25mm Not Thru Paint	Machine Polish
Door osr	Scratched	Over 25mm Not Thru Paint	Machine Polish
Door osr	Chipped	1 To 5	Smart Repair
Door osf	Scratched	Over 25mm Not Thru Paint	Machine Polish
Door osf	Chipped	1 To 5	Smart Repair
Wing osf	Scratched	Over 25mm Not Thru Paint	Machine Polish
Bumper Rear	Poor Previous Repair	Poor Paint	Refinish

Vehicle Splat

The diagram illustrates the layout of a vehicle, showing the front, rear, and side views. Key components are labeled with red text:

- Front View:** The front of the car is at the top. The hood is labeled **C2** (twice). The windshield is labeled **S2**. The roof is labeled **C2** (twice).
- Rear View:** The rear of the car is at the bottom. The trunk is labeled **C2** (twice). The rear window is labeled **S2**. The rear bumper is labeled **C2** (twice).
- Side View:** The side panels are labeled **PP** (Passenger Protection) on both the left and right sides.
- Wheels:** The wheels are represented by circles. The front wheels are labeled **C2** (twice), and the rear wheels are labeled **C2** (twice).

Splat Key

S2
Scratch/Paint defect 30-100mm

C2
Multiple Chips

PP
Poor Previous

Comments
<p>engine noisy</p> <p>No mechanical inspection has been undertaken on this vehicle, any mechanical items noted are for reference only and cannot be relied on.</p>