

Vehicle Inspection Report

Date Inspected: 14/04/2025 12:30

Reg: GU72WYL

VIN: WBA7M920707L64294

NAMA Grading



Grade

1

Appraised By: Eastbourne Car Auctions

General Details

Make	BMW	Body Type	Hatchback	Doors	5
Model	118D M SPORT AUTO - 1995cc	Fuel Type	Diesel	Colour	Red
Mileage	11,330 miles	Transmission	Auto	Year of MFR	2022
				Date First Reg	17/10/2022

Miscellaneous

V5 Location	Here
No. Keys	2

Tyres & Wheels

OSF Depth	4 mm	Alloys	Yes
NSF Depth	4 mm	Alloys That Need Refurb	3
OSR Depth	4 mm	Tools	No
NSR Depth	4 mm	Spare	No Spare

Interior Condition

Carpets	Average
Upholstery	Average
Seats	Average
Parcel Shelf	Yes
Odour	No

Service History

Service History Stamps

Service Yes

Extras

Metallic Paint	No	Central Locking	Yes	Interior	Half Leather	Electric Seats	Yes
Air Conditioning	Yes	Sun Roof	No	Elec Windows	4	Heated Seats	Yes
Stereo	Radio	Sat Nav	Built In	Cruise	Yes	Xenons	No
Keyless Entry	No	Towbar	No	Number of Seats	5	Parking Sensors	Front & Rear
Phone Kit	Yes	Drv Airbag	Yes	Reversing Camera	No	EML	No

Damage Assessment

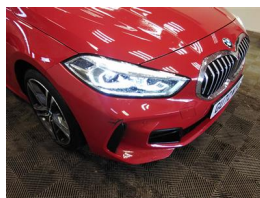


Bonnet

Chipped

1 To 5

Smart
Repair



Bumper Front

Scratched

25 to
100mm
Thru Paint

Smart
Repair

Bumper Front

Scratched

Over
25mm Not
Thru Paint

Machine
Polish



Screen Front

Chipped

UpTo
10mm

Smart
Repair

Door osf

Scratched

Over
25mm Not
Thru Paint

Machine
Polish

Door osr

Scratched

Over
25mm Not
Thru Paint

Machine
Polish

Bumper Rear

Scratched

Over
25mm Not
Thru Paint

Machine
Polish



Bumper Rear

Chipped

Multiple
Chips

Smart
Repair

Door nsr

Scratched

Over
25mm Not
Thru Paint

Machine
Polish

Door nsf

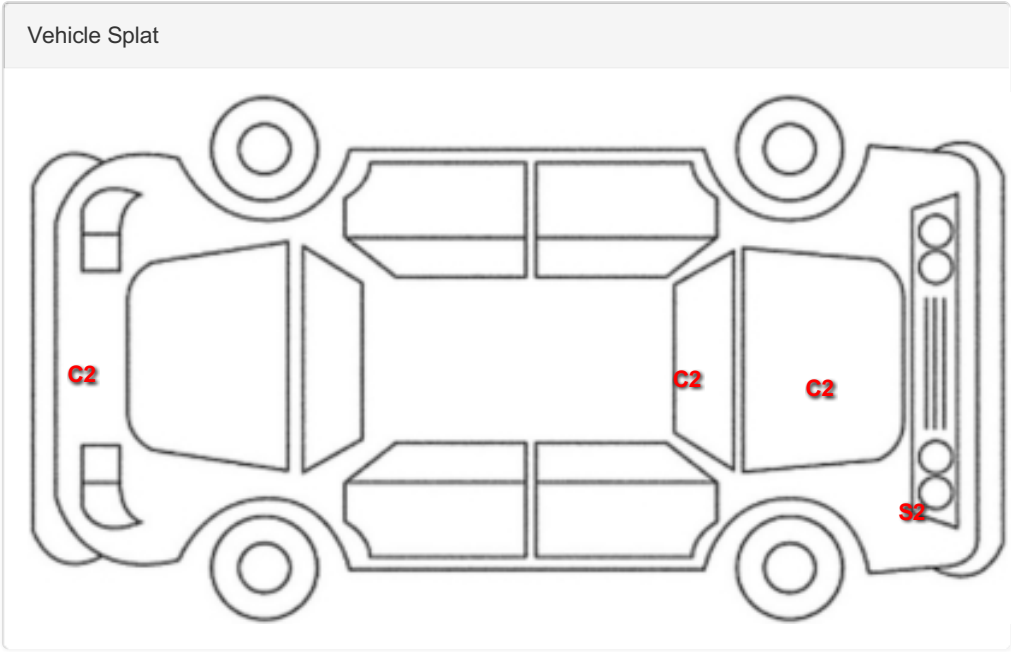
Scratched

Over
25mm Not
Thru Paint

Machine
Polish

Damage Lines

Component	Condition	Severity	Repair
Bonnet	Chipped	1 To 5	Smart Repair
Bumper Front	Scratched	25 to 100mm Thru Paint	Smart Repair
Bumper Front	Scratched	Over 25mm Not Thru Paint	Machine Polish
Screen Front	Chipped	UpTo 10mm	Smart Repair
Door osf	Scratched	Over 25mm Not Thru Paint	Machine Polish
Door osr	Scratched	Over 25mm Not Thru Paint	Machine Polish
Bumper Rear	Scratched	Over 25mm Not Thru Paint	Machine Polish
Bumper Rear	Chipped	Multiple Chips	Smart Repair
Door nsr	Scratched	Over 25mm Not Thru Paint	Machine Polish
Door nsf	Scratched	Over 25mm Not Thru Paint	Machine Polish



Splat Key
S2 Scratch/Paint defect 30-100mm
C2 Multiple Chips

Comments
<p>£65 ADDITIONAL FEE. Services stored in on-board system. Last Service - 26/09/2024 at 9,401 miles (1</p> <p>No mechanical inspection has been undertaken on this vehicle, any mechanical items noted are for reference only and cannot be relied on.</p>