

Vehicle Inspection Report

Date Inspected: 23/04/2025 17:03

Reg: LM18GGJ

VIN: AHTHB3CD902126961

NAMA Grading



Grade

3

Appraised By: Eastbourne Car Auctions

General Details

Make	TOYOTA	Body Type	Pickup	Doors	5
Model	HILUX ICON D-4D	Fuel Type	Diesel	Colour	Black
	4WD DCB A - 2393cc	Transmission	Auto	Year of MFR	2018
Mileage	108,076 miles			Date First Reg	02/07/2018

Miscellaneous

V5 Location	
No. Keys	2

Tyres & Wheels

OSF Depth	7 mm	Alloys	Yes
NSF Depth	7 mm	Alloys That Need Refurb	4
OSR Depth	7 mm	Tools	No
NSR Depth	7 mm	Spare	Steel

Interior Condition

Carpets	Average
Upholstery	Average
Seats	Average
Parcel Shelf	No
Odour	No

Service History

Service No
History
Stamps

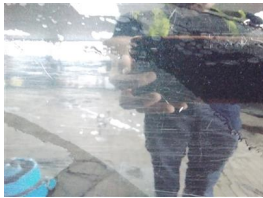
Extras

Metallic Paint	No	Central Locking	Yes	Interior	Cloth	Electric Seats	No
Air Conditioning	Yes	Sun Roof	No	Elec Windows	4	Heated Seats	No
Stereo	Radio	Sat Nav	No	Cruise	Yes	Xenons	Yes
Keyless Entry	No	Towbar	Yes	Number of Seats	5	Parking Sensors	Front & Rear
Phone Kit	Yes	Drv Airbag	Yes	Reversing Camera	Yes	EML	No

Damage Assessment



Boot Lid	Bumper Rear	Qtr Panel nsr
Dented	Scratched	Scratched
With Paint Damage	Over 25mm Not Thru Paint	Over 25mm Not Thru Paint
Repair and Refinish	Machine Polish	Machine Polish
	Qtr Panel osr	
	Scratched	
	Over	



**Qtr Panel
nsr**

Chipped

1 To 5

Smart
Repair

25mm Not
Thru Paint

Machine
Polish

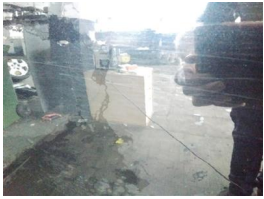


**Qtr Panel
osr**

Chipped

1 To 5

Smart
Repair



Door nsr

Scratched

Over
25mm Not
Thru Paint

Machine
Polish

Door nsr

Chipped

1 To 5

Smart
Repair

Door nsf

Scratched

Over
25mm Not
Thru Paint

Machine
Polish



Door nsf

Chipped

1 To 5

Smart
Repair



Wing nsf

Scratched

Over
25mm Not
Thru Paint

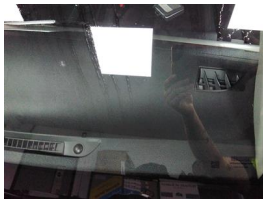
Machine
Polish

Wing nsf

Dented

2 Or Less
UpTo
10mm

Smart
Repair



**Screen
Front**

Chipped

UpTo
10mm

Smart
Repair



**Bumper
Front**

Scratched

Over
100mm
Thru Paint

Refinish



Bonnet

Dented

With Paint
Damage

Repair
and
Refinish



Wing osf

Scratched

Over
25mm Not
Thru Paint

Machine
Polish

Wing osf

Chipped

1 To 5

Smart
Repair

Door osf

Scratched

Over
25mm Not
Thru Paint

Machine
Polish

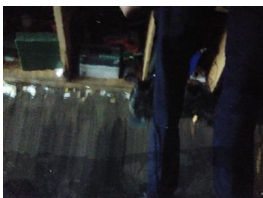


Door osf

Dented

2 Or Less
UpTo
10mm

Smart
Repair



Door osr

Scratched

Over
25mm Not
Thru Paint

Machine
Polish

Door osr

Chipped

1 To 5

Smart
Repair



Roof

Scratched

Over
25mm Not
Thru Paint

Machine
Polish



Door nsr

Dented

2 Or Less
UpTo
10mm

Smart
Repair

Door nsf

Dented

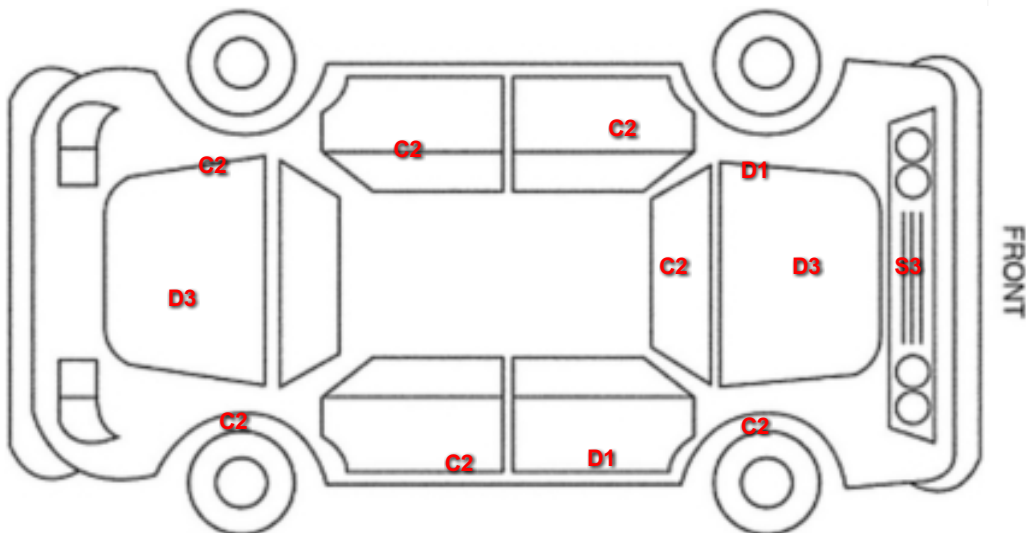
Between
10mm +
30mm

Smart
Repair

Damage Lines

Component	Condition	Severity	Repair
Boot Lid	Dented	With Paint Damage	Repair and Refinish
Bumper Rear	Scratched	Over 25mm Not Thru Paint	Machine Polish
Qtr Panel nsr	Scratched	Over 25mm Not Thru Paint	Machine Polish
Qtr Panel nsr	Chipped	1 To 5	Smart Repair
Qtr Panel osr	Scratched	Over 25mm Not Thru Paint	Machine Polish
Qtr Panel osr	Chipped	1 To 5	Smart Repair
Door nsr	Scratched	Over 25mm Not Thru Paint	Machine Polish
Door nsr	Chipped	1 To 5	Smart Repair
Door nsf	Scratched	Over 25mm Not Thru Paint	Machine Polish
Door nsf	Chipped	1 To 5	Smart Repair
Wing nsf	Scratched	Over 25mm Not Thru Paint	Machine Polish
Wing nsf	Dented	2 Or Less UpTo 10mm	Smart Repair
Screen Front	Chipped	UpTo 10mm	Smart Repair
Bumper Front	Scratched	Over 100mm Thru Paint	Refinish
Bonnet	Dented	With Paint Damage	Repair and Refinish
Wing osf	Scratched	Over 25mm Not Thru Paint	Machine Polish
Wing osf	Chipped	1 To 5	Smart Repair
Door osf	Scratched	Over 25mm Not Thru Paint	Machine Polish
Door osf	Dented	2 Or Less UpTo 10mm	Smart Repair
Door osr	Scratched	Over 25mm Not Thru Paint	Machine Polish
Door osr	Chipped	1 To 5	Smart Repair
Roof	Scratched	Over 25mm Not Thru Paint	Machine Polish
Door nsr	Dented	2 Or Less UpTo 10mm	Smart Repair
Door nsf	Dented	Between 10mm + 30mm	Smart Repair

Vehicle Splat



Splat Key

- S3**
Scratch/Paint defect 100m +
- D1**
Dent/damage under 30mm
- D3**
Dent/damage 100mm +
- C2**
Multiple Chips

Comments

.miss sill trims

No mechanical inspection has been undertaken on this vehicle, any mechanical items noted are for reference only and cannot be relied on.