

Vehicle Inspection Report

Date Inspected: 16/04/2025 15:26

Reg: KP68HJE

VIN: U5YPH814LKL583253

NAMA Grading



Grade

4

Appraised By: Eastbourne Car Auctions

General Details

<b>Make</b>	KIA	<b>Body Type</b>	Estate	<b>Doors</b>	5
<b>Model</b>	SPORTAGE 2 ISG - 1591cc	<b>Fuel Type</b>	Petrol	<b>Colour</b>	White
<b>Mileage</b>	80,090 miles	<b>Transmission</b>	Manual	<b>Year of MFR</b>	2018
		<b>Gears</b>	6	<b>Date First Reg</b>	19/10/2018

Miscellaneous

<b>V5 Location</b>	Here
<b>MOT Location</b>	Here
<b>MOT Expiry</b>	12/05/2025
<b>No. Keys</b>	2

Tyres & Wheels

<b>OSF Depth</b>	3 mm	<b>Alloys</b>	Yes
<b>NSF Depth</b>	6 mm	<b>Alloys That Need Refurb</b>	4
<b>OSR Depth</b>	7 mm	<b>Tools</b>	No
<b>NSR Depth</b>	2 mm	<b>Spare</b>	Inflation Kit

Interior Condition

<b>Carpets</b>	Average
<b>Upholstery</b>	Average
<b>Seats</b>	Average
<b>Parcel Shelf</b>	Yes
<b>Odour</b>	No

Service History

**Service History**  
Stamps

Extras

<b>Metallic Paint</b>	No	<b>Central Locking</b>	Yes	<b>Interior</b>	Cloth	<b>Electric Seats</b>	No
<b>Air Conditioning</b>	Yes	<b>Sun Roof</b>	No	<b>Elec Windows</b>	4	<b>Heated Seats</b>	Yes
<b>Stereo</b>	Radio	<b>Sat Nav</b>	Built In	<b>Cruise</b>	Yes	<b>Xenons</b>	No
<b>Keyless Entry</b>	No	<b>Towbar</b>	No	<b>Number of Seats</b>	5	<b>Parking Sensors</b>	Rear
<b>Phone Kit</b>	Yes	<b>Drv Airbag</b>	Yes	<b>Reversing Camera</b>	Yes	<b>EML</b>	No

Damage Assessment

Bumper Rear

Scratched

Over 25mm Not Thru Paint

Machine Polish



Bumper Rear

Scratched

25 to 100mm Thru Paint

Smart Repair



Boot Lid

Chipped

1 To 5

Smart Repair



**Qtr Panel  
nsr**

Dented

With Paint  
Damage

Repair  
and  
Refinish



**Door nsr**

Dented

With Paint  
Damage

Repair  
and  
Refinish



**Door nsf**

Dented

With Paint  
Damage

Repair  
and  
Refinish

**Door  
Mirror  
Assy nsf**

Scratched  
(Painted)

Over  
25mm  
Thru Paint

Smart  
Repair

**Wing nsf**

Scratched

Over  
25mm Not  
Thru Paint

Machine  
Polish

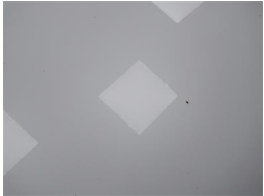


**Bumper  
Front**

Scratched

Over  
100mm  
Thru Paint

Refinish



**Bonnet**

Chipped

1 To 5

Smart  
Repair



**Screen  
Front**

Chipped

UpTo  
10mm

Smart  
Repair



**Wing osf**

Poor  
Previous  
Repair

Poor Paint

Refinish



**Door  
Mirror  
Assy osf**

Scratched  
(Painted)

Over  
25mm  
Thru Paint

Smart  
Repair

**Door osf**

Scratched

Over  
25mm Not  
Thru Paint

Machine  
Polish



**Door osf**

Chipped

1 To 5

Smart  
Repair



**Door osf**

Chipped

1 To 5

Smart  
Repair

**Qtr Panel  
osr**

Scratched

Over  
25mm Not  
Thru Paint

Machine  
Polish

Damage Lines			
Component	Condition	Severity	Repair
Bumper Rear	Scratched	Over 25mm Not Thru Paint	Machine Polish
Bumper Rear	Scratched	25 to 100mm Thru Paint	Smart Repair
Boot Lid	Chipped	1 To 5	Smart Repair
Qtr Panel nsr	Dented	With Paint Damage	Repair and Refinish
Door nsr	Dented	With Paint Damage	Repair and Refinish
Door nsf	Dented	With Paint Damage	Repair and Refinish
Door Mirror Assy nsf	Scratched (Painted)	Over 25mm Thru Paint	Smart Repair
Wing nsf	Scratched	Over 25mm Not Thru Paint	Machine Polish
Bumper Front	Scratched	Over 100mm Thru Paint	Refinish
Bonnet	Chipped	1 To 5	Smart Repair
Screen Front	Chipped	UpTo 10mm	Smart Repair
Wing osf	Poor Previous Repair	Poor Paint	Refinish
Door Mirror Assy osf	Scratched (Painted)	Over 25mm Thru Paint	Smart Repair
Door osf	Scratched	Over 25mm Not Thru Paint	Machine Polish
Door osf	Chipped	1 To 5	Smart Repair
Door osf	Chipped	1 To 5	Smart Repair
Qtr Panel osr	Scratched	Over 25mm Not Thru Paint	Machine Polish

Vehicle Splat

The diagram illustrates the layout of a vehicle, showing the front, rear, and side views. Key components are labeled with red text:

- Front View (Top):** The hood is labeled **D3** (twice). The windshield is labeled **C2** (twice). The front bumper is labeled **C2** (twice).
- Rear View (Bottom):** The trunk is labeled **C2** (twice). The rear window is labeled **C2** (twice). The rear bumper is labeled **C2** (twice).
- Left Side View (Right):** The door is labeled **C2**. The side mirror is labeled **S3**.
- Right Side View (Left):** The door is labeled **C2**. The side mirror is labeled **S2**.

Splat Key

<b>S2</b>	Scratch/Paint defect 30-100mm
<b>S3</b>	Scratch/Paint defect 100m +
<b>D3</b>	Dent/damage 100mm +
<b>C2</b>	Multiple Chips
<b>PP</b>	Poor Previous

Comments
<p>£100 ADDITIONAL FEE Last Service - 31/03/2025 at 79,629 miles (6 SERVICES (5 MAIN DEALER))</p> <p>.slight rattle from engine</p> <p><b>No mechanical inspection has been undertaken on this vehicle, any mechanical items noted are for reference only and cannot be relied on.</b></p>