

Vehicle Inspection Report

Date Inspected: 23/04/2025 15:39

Reg: VE63NHO

VIN: WMWZD52030WL72786

NAMA Grading



Grade

3

Appraised By: Eastbourne Car Auctions

General Details

Make	MINI	Body Type	Hatchback	Doors	5
Model	COUNTRYMAN COOPER D ALL4 - 1598cc	Fuel Type	Diesel	Colour	White
		Transmission	Manual	Year of MFR	2013
Mileage	87,610 miles	Gears	6	Date First Reg	31/12/2013

Miscellaneous

V5 Location	Here
MOT Location	Here
MOT Expiry	11/03/2026
No. Keys	2

Tyres & Wheels

OSF Depth	5 mm	Alloys	Yes
NSF Depth	6 mm	Alloys That Need Refurb	3
OSR Depth	6 mm	Tools	No
NSR Depth	3 mm	Spare	No Spare

Interior Condition

Carpets	Average
Upholstery	Average
Seats	Average
Parcel Shelf	Yes
Odour	No

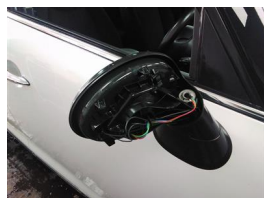
Service History

Service History
Stamps

Extras

Metallic Paint	No	Central Locking	Yes	Interior	Cloth	Electric Seats	No
Air Conditioning	Yes	Sun Roof	No	Elec Windows	4	Heated Seats	No
Stereo	Radio	Sat Nav	No	Cruise	No	Xenons	No
Keyless Entry	Yes	Towbar	No	Number of Seats	5	Parking Sensors	Rear
Phone Kit	Yes	Drv Airbag	Yes	Reversing Camera	No	EML	No

Damage Assessment



Door Mirror Assy osf

Missing
Needs Replaced
Replace

Door osf

Scratched
Over 25mm Not Thru Paint
Machine Polish



Door osf

Chipped
Edge Chip
Smart Repair



Door osr

Chipped
Edge Chip
Smart Repair



Bumper Rear

Scratched
Over 100mm Thru Paint
Refinish



Tailgate

Dented
Over 30mm
Repair and Refinish



Qtr Panel nsr

Chipped
1 To 5
Smart Repair



Door nsr

Chipped
1 To 5
Smart Repair



Door nsf

Chipped
Edge Chip
Smart Repair



Door Mirror Assy nsf

Scratched (Painted)
UpTo 25mm Thru Paint
Smart Repair



Bonnet

Chipped
Multiple Chips
Refinish



Lamp nsr

Broken
Needs Replaced
Replace

Damage Lines

Component

Door Mirror Assy osf

Door osf

Door osf

Door osr

Bumper Rear

Tailgate

Qtr Panel nsr

Door nsr

Door nsf

Door Mirror Assy nsf

Bonnet

Lamp nsr

Condition

Missing

Scratched

Chipped

Chipped

Scratched

Dented

Chipped

Chipped

Chipped

Scratched (Painted)

Chipped

Broken

Severity

Replace

Over 25mm Not Thru Paint

Edge Chip

Edge Chip

Over 100mm Thru Paint

Over 30mm

1 To 5

1 To 5

Edge Chip

UpTo 25mm Thru Paint

Multiple Chips

Replace

Repair

Replace

Machine Polish

Smart Repair

Smart Repair

Refinish

Repair and Refinish

Smart Repair

Smart Repair

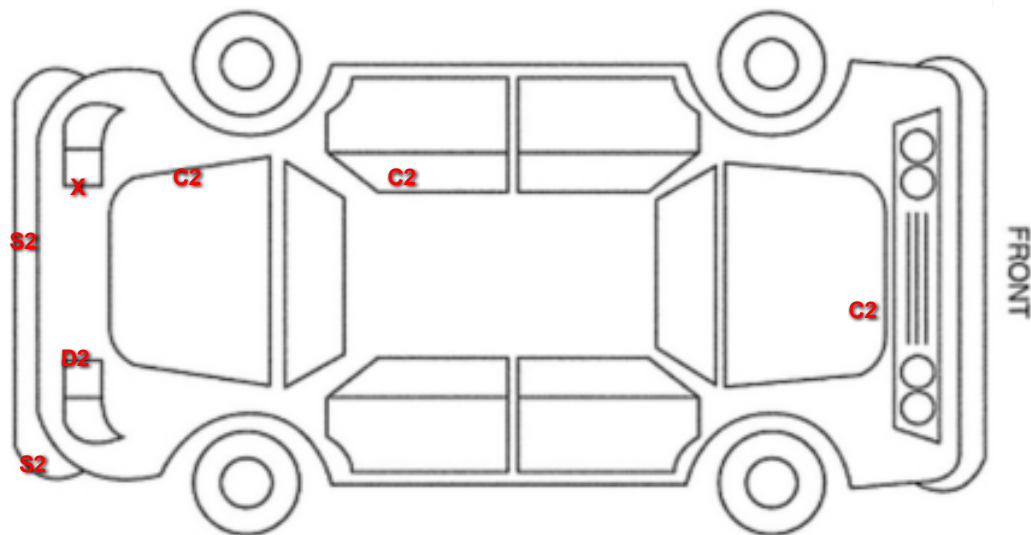
Smart Repair

Smart Repair

Refinish

Replace

Vehicle Splat



Splat Key

S2

Scratch/Paint defect 30-100mm

D2

Dent/damage 30-100mm

C2

Multiple Chips

X

Req Replacement

Comments

Last Service - 10/10/2015 at 31,069 miles (1 SERVICE)

No mechanical inspection has been undertaken on this vehicle, any mechanical items noted are for reference only and cannot be relied on.