

Vehicle Inspection Report

Date Inspected: 22/04/2025 16:13

Reg: GD19TEV

VIN: TMBMK7NS6K8069763

NAMA Grading



Grade

4

Appraised By: Eastbourne Car Auctions

General Details

Make	SKODA	Body Type	Estate	Doors	5
Model	KODIAQ SCOUT TDI SCR 4X4 - 1968cc	Fuel Type	Diesel	Colour	Black
Mileage	119,365 miles	Transmission	Auto	Year of MFR	2019
				Date First Reg	25/05/2019

Miscellaneous

V5 Location	Here
MOT Location	Here
MOT Expiry	24/05/2025
No. Keys	2

Tyres & Wheels

OSF Depth	5 mm	Alloys	Yes
NSF Depth	5 mm	Alloys That Need Refurb	4
OSR Depth	5 mm	Tools Spare	No
NSR Depth	5 mm		No Spare

Interior Condition

Carpets	Average
Upholstery	Average
Seats	Average
Parcel Shelf	Yes
Odour	No

Service History

Service History
Stamps

Extras

Metallic Paint	Yes	Central Locking	Yes	Interior	Half Leather	Electric Seats	Yes
Air Conditioning	Yes	Sun Roof	No	Elec Windows	4	Heated Seats	Yes
Stereo	Radio	Sat Nav	Built In	Cruise	Yes	Xenons	No
Keyless Entry	No	Towbar	No	Number of Seats	7	Parking Sensors	Front & Rear
Phone Kit	Yes	Drv Airbag	Yes	Reversing Camera	No	EML	No

Damage Assessment



Bonnet

Chipped
Multiple Chips
Refinish

Bumper Front

Scratched
Over 25mm Not Thru Paint
Machine Polish



Bumper Front

Chipped
Multiple Chips
Smart Repair

Door osf

Scratched
Over 25mm Not



Wing osf
Scratched

Over
25mm
Thru Paint

Refinish



Screen Front

Chipped

UpTo
10mm

Smart
Repair

Thru Paint

Machine
Polish



Door osf

Chipped

1 To 5

Smart
Repair

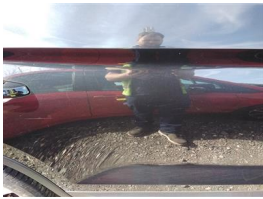


Door osr

Scratched

Over
25mm Not
Thru Paint

Machine
Polish



Door osr

Chipped

1 To 5

Smart
Repair



Qtr Panel osr

Scratched

Over
25mm
Thru Paint

Refinish



Bumper Rear

Chipped

Multiple
Chips

Smart
Repair



Boot Lid

Scratched

Over
25mm
Thru Paint

Refinish

Bumper Rear

Scratched

Over
25mm Not
Thru Paint

Machine
Polish

Qtr Panel nsr

Scratched

Over
25mm Not
Thru Paint

Machine
Polish



Qtr Panel nsr

Chipped

1 To 5

Smart
Repair

Door nsr

Scratched

Over
25mm Not
Thru Paint

Machine
Polish



Door nsr

Chipped

1 To 5

Smart
Repair



Door nsf

Dented

With Paint
Damage

Repair
and
Refinish

Wing nsf

Scratched

Over
25mm Not
Thru Paint

Machine
Polish



Wing nsf

Chipped

1 To 5

Smart
Repair

Damage Lines			
Component	Condition	Severity	Repair
Bonnet	Chipped	Multiple Chips	Refinish
Bumper Front	Scratched	Over 25mm Not Thru Paint	Machine Polish
Bumper Front	Chipped	Multiple Chips	Smart Repair
Wing osf	Scratched	Over 25mm Thru Paint	Refinish
Screen Front	Chipped	UpTo 10mm	Smart Repair
Door osf	Scratched	Over 25mm Not Thru Paint	Machine Polish
Door osf	Chipped	1 To 5	Smart Repair
Door osr	Scratched	Over 25mm Not Thru Paint	Machine Polish
Door osr	Chipped	1 To 5	Smart Repair
Qtr Panel osr	Scratched	Over 25mm Thru Paint	Refinish
Bumper Rear	Chipped	Multiple Chips	Smart Repair
Boot Lid	Scratched	Over 25mm Thru Paint	Refinish
Bumper Rear	Scratched	Over 25mm Not Thru Paint	Machine Polish
Qtr Panel nsr	Scratched	Over 25mm Not Thru Paint	Machine Polish
Qtr Panel nsr	Chipped	1 To 5	Smart Repair
Door nsr	Scratched	Over 25mm Not Thru Paint	Machine Polish
Door nsr	Chipped	1 To 5	Smart Repair
Door nsf	Dented	With Paint Damage	Repair and Refinish
Wing nsf	Scratched	Over 25mm Not Thru Paint	Machine Polish
Wing nsf	Chipped	1 To 5	Smart Repair

Vehicle Splat

The diagram shows a top-down view of a vehicle chassis. The central area is a large rectangle divided into four quadrants by a horizontal and vertical line. The top-left quadrant is labeled 'C2'. The top-right quadrant is labeled 'D2'. The bottom-left quadrant is labeled 'C2'. The bottom-right quadrant is labeled 'C2'. On the left side, there are two circular wheels at the front and rear. Between them is a rectangular component labeled 'S3'. Below the front wheel is another rectangular component labeled 'C2'. On the right side, there are two circular wheels at the front and rear. Between them is a rectangular component labeled 'S3'. Above the front wheel is another rectangular component labeled 'C2'. At the very back (right side), there is a long, narrow rectangular component labeled 'C2'.

Splat Key

S3
Scratch/Paint defect 100m +

D2
Dent/damage 30-100mm

C2
Multiple Chips

Comments

£65 ADDITIONAL FEE. Last Service - 03/09/2024 at 109,366 miles (9 main dealer services)

brake pad warning light on

No mechanical inspection has been undertaken on this vehicle, any mechanical items noted are for reference only and cannot be relied on.