

Vehicle Inspection Report

Date Inspected: 22/04/2025 15:02

Reg: OE60NBG

VIN: SALFA2AEXBH230753

NAMA Grading



Grade

4

Appraised By: Eastbourne Car Auctions

General Details

Make	LAND ROVER	Body Type	Estate	Doors	5
Model	FREELANDER HSE SD4 AUTO - 2179cc	Fuel Type	Diesel	Colour	Grey
		Transmission	Auto	Year of MFR	2011
Mileage	161,450 miles			Date First Reg	18/01/2011

Miscellaneous

V5 Location	
No. Keys	2

Tyres & Wheels

OSF Depth	5 mm	Alloys	Yes
NSF Depth	5 mm	Alloys That Need	4
OSR Depth	5 mm	Refurb	
NSR Depth	5 mm	Tools	No
		Spare	Alloy

Interior Condition

Carpets	Average
Upholstery	Average
Seats	Average
Parcel Shelf	Yes
Odour	No

Service History

Service No
History
Stamps

Extras

Metallic Paint	Yes	Central Locking	Yes	Interior	Leather	Electric Seats	Yes
Air Conditioning	Yes	Sun Roof	Yes	Elec Windows	4	Heated Seats	Yes
Stereo	Radio	Sat Nav	Built In	Cruise	Yes	Xenons	No
Keyless Entry	No	Towbar	No	Number of Seats	5	Parking Sensors	Front & Rear
Phone Kit	No	Drv Airbag	Yes	Reversing Camera	No	EML	No

Bumper Front

Scratched
Over 25mm Not Thru Paint
Machine Polish



Bumper Front

Chipped
Multiple Chips
Smart Repair



Bumper Front Moulding

Scratched (Painted)
Over 25mm Thru Paint
Smart Repair



Bonnet

Chipped
Multiple Chips
Refinish

Wing osf

Scratched
Over 25mm Not Thru Paint
Machine Polish



Wing osf

Chipped
1 To 5
Smart Repair



Door osf

Scratched
Over 25mm Thru Paint
Refinish



Door osr

Dented
With Paint Damage
Repair and Refinish

Qtr Panel osr

Scratched
Over 25mm Not Thru Paint
Machine Polish

Qtr Panel osr

Chipped
1 To 5
Smart Repair



Bumper Rear

Scratched
Over 100mm Thru Paint
Refinish

Qtr Panel nsr

Scratched
Over 25mm Not Thru Paint
Machine Polish



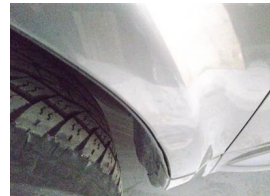
Door nsr

Dented
Over 30mm
Repair and Refinish



Door nsf

Dented
Over 30mm
Repair and Refinish



Wing nsf

Dented
Over 30mm
Repair and Refinish

Damage Lines			
Component	Condition	Severity	Repair
Bumper Front	Scratched	Over 25mm Not Thru Paint	Machine Polish
Bumper Front	Chipped	Multiple Chips	Smart Repair
Bumper Front Moulding	Scratched (Painted)	Over 25mm Thru Paint	Smart Repair
Bonnet	Chipped	Multiple Chips	Refinish
Wing osf	Scratched	Over 25mm Not Thru Paint	Machine Polish
Wing osf	Chipped	1 To 5	Smart Repair
Door osf	Scratched	Over 25mm Thru Paint	Refinish
Door osr	Dented	With Paint Damage	Repair and Refinish
Qtr Panel osr	Scratched	Over 25mm Not Thru Paint	Machine Polish
Qtr Panel osr	Chipped	1 To 5	Smart Repair
Bumper Rear	Scratched	Over 100mm Thru Paint	Refinish
Qtr Panel nsr	Scratched	Over 25mm Not Thru Paint	Machine Polish
Door nsr	Dented	Over 30mm	Repair and Refinish
Door nsf	Dented	Over 30mm	Repair and Refinish
Wing nsf	Dented	Over 30mm	Repair and Refinish

Vehicle Splat

Splat Key

S3
Scratch/Paint defect 100m +

D2
Dent/damage 30-100mm

D3
Dent/damage 100mm +

C2
Multiple Chips

Comments

No mechanical inspection has been undertaken on this vehicle, any mechanical items noted are for reference only and cannot be relied on.