

Vehicle Inspection Report

Date Inspected: 24/04/2025 10:11

Reg: AV62UOG

VIN: YV1FS84A1D2181368

NAMA Grading



Grade

4

Appraised By: Eastbourne Car Auctions

General Details

Make	VOLVO	Body Type	Saloon	Doors	4
Model	S60 SE D2 - 1560cc	Fuel Type	Diesel	Colour	Black
Mileage	147,093 miles	Transmission	Manual	Year of MFR	2012
		Gears	6	Date First Reg	30/11/2012

Miscellaneous

V5 Location	
No. Keys	2

Tyres & Wheels

OSF Depth	5 mm	Alloys	Yes
NSF Depth	5 mm	Alloys That Need Refurb	4
OSR Depth	5 mm	Tools	No
NSR Depth	4 mm	Spare	No Spare

Interior Condition

Carpets	Average
Upholstery	Average
Seats	Average
Parcel Shelf	No
Odour	No
Comments	drivers seat torn

Service History

Service No History Stamps
---------------------------

Extras

Metallic Paint	Yes	Central Locking	Yes	Interior	Half Leather	Electric Seats	No
Air Conditioning	Yes	Sun Roof	No	Elec Windows	4	Heated Seats	Yes
Stereo	Radio	Sat Nav	No	Cruise	Yes	Xenons	No
Keyless Entry	No	Towbar	No	Number of Seats	5	Parking Sensors	Rear
Phone Kit	Yes	Drv Airbag	Yes	Reversing Camera	No	EML	No

Damage Assessment



Bumper Front

Scratched  
25 to 100mm Thru Paint  
Smart Repair

Bumper Front

Scratched  
Over 25mm Not Thru Paint  
Machine Polish

Wing osf

Scratched



Bonnet

Chipped  
Multiple Chips  
Refinish



**Screen Front**  
Chipped  
UpTo 10mm  
Smart Repair

Over 25mm Not Thru Paint  
Machine Polish



**Wing osf**  
Chipped  
1 To 5  
Smart Repair



**Door osf**  
Chipped  
Multiple Chips  
Refinish

**Door osr**  
Scratched  
Over 25mm Not Thru Paint  
Machine Polish



**Door osr**  
Chipped  
1 To 5  
Smart Repair



**Qtr Panel osr**  
Scratched  
Over 25mm Not Thru Paint  
Machine Polish



**Qtr Panel osr**  
Chipped  
1 To 5  
Smart Repair



**Bumper Rear**  
Scratched  
Over 100mm Thru Paint  
Refinish



**Qtr Panel nsr**  
Dented  
Over 30mm  
Repair and Refinish



**Door nsr**  
Dented  
Over 30mm  
Repair and Refinish



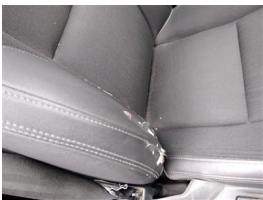
**Boot Lid**  
Scratched  
Over 25mm Not Thru Paint  
Machine Polish



**Door nsf**  
Dented  
With Paint Damage  
Repair and Refinish



**Wing nsf**  
Dented  
Over 30mm  
Repair and Refinish



**Seat Base Cover osf**  
Torn  
Over 3mm  
Replace

Damage Lines			
Component	Condition	Severity	Repair
Bumper Front	Scratched	25 to 100mm Thru Paint	Smart Repair
Bumper Front	Scratched	Over 25mm Not Thru Paint	Machine Polish
Bonnet	Chipped	Multiple Chips	Refinish
Screen Front	Chipped	UpTo 10mm	Smart Repair
Wing osf	Scratched	Over 25mm Not Thru Paint	Machine Polish
Wing osf	Chipped	1 To 5	Smart Repair
Door osf	Chipped	Multiple Chips	Refinish
Door osr	Scratched	Over 25mm Not Thru Paint	Machine Polish
Door osr	Chipped	1 To 5	Smart Repair
Qtr Panel osr	Scratched	Over 25mm Not Thru Paint	Machine Polish
Qtr Panel osr	Chipped	1 To 5	Smart Repair
Bumper Rear	Scratched	Over 100mm Thru Paint	Refinish
Qtr Panel nsr	Dented	Over 30mm	Repair and Refinish
Door nsr	Dented	Over 30mm	Repair and Refinish
Boot Lid	Scratched	Over 25mm Not Thru Paint	Machine Polish
Door nsf	Dented	With Paint Damage	Repair and Refinish
Wing nsf	Dented	Over 30mm	Repair and Refinish
Seat Base Cover osf	Torn	Over 3mm	Replace

Vehicle Splat

Splat Key

**S2**  
Scratch/Paint defect 30-100mm

**S3**  
Scratch/Paint defect 100m +

**D3**  
Dent/damage 100mm +

**C2**  
Multiple Chips

Comments
noisy engine
No mechanical inspection has been undertaken on this vehicle, any mechanical items noted are for reference only and cannot be relied on.