

Vehicle Inspection Report

Date Inspected: 29/04/2025 16:53

Reg: GY22BGK

VIN: JSAAZCA3S00542583

NAMA Grading



Grade

3

Appraised By: Eastbourne Car Auctions

General Details

Make	SUZUKI	Body Type	Hatchback	Doors	5
Model	SWIFT SZ-L DUALJET MHEV - 1197cc	Fuel Type	Hybrid	Colour	Grey
Mileage	24,408 miles	Transmission	Manual	Year of MFR	2022
		Gears	5	Date First Reg	12/03/2022

Miscellaneous

V5 Location	Here
MOT Location	Here
MOT Expiry	24/03/2026
No. Keys	2

Tyres & Wheels

OSF Depth	5 mm	Alloys	Yes
NSF Depth	5 mm	Alloys That Need Refurb	4
OSR Depth	5 mm	Tools	Yes
NSR Depth	5 mm	Spare	Inflation Kit

Interior Condition

Carpets	Average
Upholstery	Average
Seats	Average
Parcel Shelf	No
Odour	No

Service History

Service History
Stamps

Extras

Metallic Paint	Yes	Central Locking	Yes	Interior	Cloth	Electric Seats	No
Air Conditioning	Yes	Sun Roof	No	Elec Windows	2	Heated Seats	No
Stereo	Radio	Sat Nav	No	Cruise	Yes	Xenons	No
Keyless Entry	No	Towbar	No	Number of Seats	5	Parking Sensors	Rear
Phone Kit	Yes	Drv Airbag	Yes	Reversing Camera	No	EML	No

Damage Assessment

Bumper Rear

Scratched

Over
25mm Not
Thru Paint

Machine
Polish

Qtr Panel nsr

Scratched

Over



Bumper Rear

Scratched

25 to
100mm
Thru Paint

Smart
Repair

Boot Lid

Scratched

Over
25mm Not
Thru Paint

Machine
Polish

25mm Not
Thru Paint

Machine
Polish



**Qtr Panel
nsr**

Dented

Between
10mm +
30mm

Smart
Repair



Door nsr

Dented

Over
30mm

Repair
and
Refinish

Door nsf

Scratched

Over
25mm Not
Thru Paint

Machine
Polish

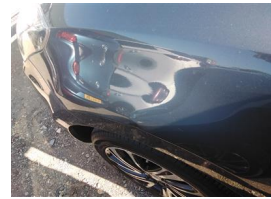


Door nsf

Chipped

1 To 5

Smart
Repair

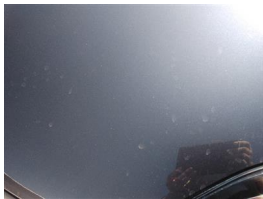


Wing nsf

Dented

Over
30mm

Repair
and
Refinish



Bonnet

Chipped

1 To 5

Smart
Repair



**Bumper
Front**

Scratched

Over
100mm
Thru Paint

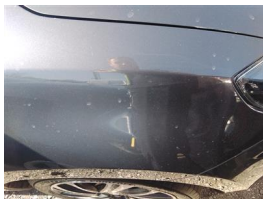
Refinish

Wing osf

Scratched

Over
25mm Not
Thru Paint

Machine
Polish

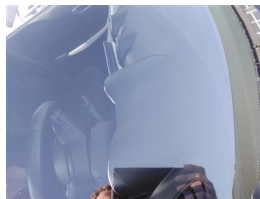


Wing osf

Chipped

1 To 5

Smart
Repair



**Screen
Front**

Chipped

UpTo
10mm

Smart
Repair

Door osf

Scratched

Over
25mm Not
Thru Paint

Machine
Polish



Door osf

Chipped

1 To 5

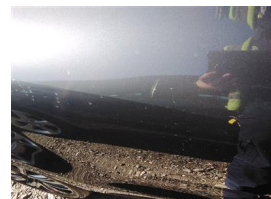
Smart
Repair

Door osr

Scratched

Over
25mm Not
Thru Paint

Machine
Polish



Door osr

Chipped

1 To 5

Smart
Repair

**Qtr Panel
osr**

Scratched

Over
25mm Not
Thru Paint

Machine
Polish



**Qtr Panel
osr**

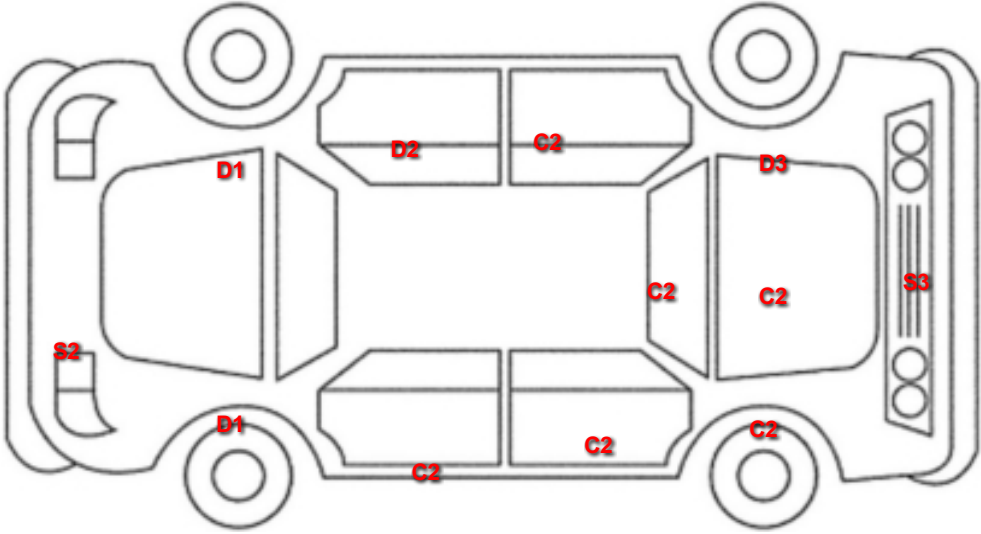
Dented

2 Or Less
UpTo
10mm

Smart
Repair

Damage Lines			
Component	Condition	Severity	Repair
Bumper Rear	Scratched	Over 25mm Not Thru Paint	Machine Polish
Bumper Rear	Scratched	25 to 100mm Thru Paint	Smart Repair
Boot Lid	Scratched	Over 25mm Not Thru Paint	Machine Polish
Qtr Panel nsr	Scratched	Over 25mm Not Thru Paint	Machine Polish
Qtr Panel nsr	Dented	Between 10mm + 30mm	Smart Repair
Door nsr	Dented	Over 30mm	Repair and Refinish
Door nsf	Scratched	Over 25mm Not Thru Paint	Machine Polish
Door nsf	Chipped	1 To 5	Smart Repair
Wing nsf	Dented	Over 30mm	Repair and Refinish
Bonnet	Chipped	1 To 5	Smart Repair
Bumper Front	Scratched	Over 100mm Thru Paint	Refinish
Wing osf	Scratched	Over 25mm Not Thru Paint	Machine Polish
Wing osf	Chipped	1 To 5	Smart Repair
Screen Front	Chipped	UpTo 10mm	Smart Repair
Door osf	Scratched	Over 25mm Not Thru Paint	Machine Polish
Door osf	Chipped	1 To 5	Smart Repair
Door osr	Scratched	Over 25mm Not Thru Paint	Machine Polish
Door osr	Chipped	1 To 5	Smart Repair
Qtr Panel osr	Scratched	Over 25mm Not Thru Paint	Machine Polish
Qtr Panel osr	Dented	2 Or Less UpTo 10mm	Smart Repair

Vehicle Splat



Splat Key

S2
Scratch/Paint defect 30-100mm

S3
Scratch/Paint defect 100m +

D1
Dent/damage under 30mm

D2
Dent/damage 30-100mm

D3
Dent/damage 100mm +

C2
Multiple Chips

Comments
Last Service - 25/03/2025 at 24,152 miles (3 SERVICES)
.
No mechanical inspection has been undertaken on this vehicle, any mechanical items noted are for reference only and cannot be relied on.