

Vehicle Inspection Report

Date Inspected: 28/04/2025 10:38

Reg: LO19VBT

VIN: VF3PSCFBKR005219

NAMA Grading



Grade

2

Appraised By: Eastbourne Car Auctions

General Details

Make	PEUGEOT	Body Type	Hatchback	Doors	5
Model	108 ALLURE S-A - 998cc	Fuel Type	Petrol	Colour	Black
Mileage	44,515 miles	Transmission	Auto	Year of MFR	2019
				Date First Reg	10/07/2019

Miscellaneous

V5 Location	Here
MOT Location	Here
MOT Expiry	09/07/2025
No. Keys	2

Tyres & Wheels

OSF Depth	4 mm	Alloys	Yes
NSF Depth	4 mm	Alloys That Need Refurb	4
OSR Depth	4 mm	Tools	Yes
NSR Depth	4 mm	Spare	Space Saver

Interior Condition

Carpets	Average
Upholstery	Average
Seats	Average
Parcel Shelf	Yes
Odour	No

Service History

Service History Stamps

Service Yes

Extras

Metallic Paint	No	Central Locking	Yes	Interior	Cloth	Electric Seats	No
Air Conditioning	Yes	Sun Roof	No	Elec Windows	2	Heated Seats	No
Stereo	Radio	Sat Nav	No	Cruise	No	Xenons	No
Keyless Entry	Yes	Towbar	No	Number of Seats	4	Parking Sensors	No
Phone Kit	Yes	Drv Airbag	Yes	Reversing Camera	Yes	EML	No

Damage Assessment

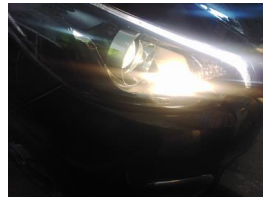


Bonnet

Chipped
1 To 5
Smart Repair

Bumper Front

Scratched
Over 25mm Not Thru Paint
Machine Polish



Bumper Front

Chipped
Multiple Chips
Smart Repair

Wing osf

Scratched
Over 25mm Not

Door osf

Scratched
Over 25mm Not

Thru Paint
Machine
Polish



**Screen
Front**

Chipped

UpTo
10mm

Smart
Repair

Thru Paint

Machine
Polish

Door nsr

Chipped

1 To 5

Smart
Repair

Door osr

Scratched

Over
25mm Not
Thru Paint

Machine
Polish

**Bumper
Rear**

Scratched

Over
25mm Not
Thru Paint

Machine
Polish



**Bumper
Rear**

Scratched

25 to
100mm
Thru Paint

Smart
Repair



**Qtr Panel
nsr**

Scratched

Over
25mm
Thru Paint

Refinish

Door nsr

Scratched

Over
25mm Not
Thru Paint

Machine
Polish



Door nsr

Scratched

UpTo
25mm
Thru Paint

Smart
Repair

Door nsf

Scratched

Over
25mm Not
Thru Paint

Machine
Polish



Door nsf

Chipped

1 To 5

Smart
Repair



Wing nsf

Dented

2 Or Less
UpTo
10mm

Smart
Repair

Damage Lines			
Component	Condition	Severity	Repair
Bonnet	Chipped	1 To 5	Smart Repair
Bumper Front	Scratched	Over 25mm Not Thru Paint	Machine Polish
Bumper Front	Chipped	Multiple Chips	Smart Repair
Wing osf	Scratched	Over 25mm Not Thru Paint	Machine Polish
Screen Front	Chipped	UpTo 10mm	Smart Repair
Door osf	Scratched	Over 25mm Not Thru Paint	Machine Polish
Door nsr	Chipped	1 To 5	Smart Repair
Door osr	Scratched	Over 25mm Not Thru Paint	Machine Polish
Bumper Rear	Scratched	Over 25mm Not Thru Paint	Machine Polish
Bumper Rear	Scratched	25 to 100mm Thru Paint	Smart Repair
Qtr Panel nsr	Scratched	Over 25mm Thru Paint	Refinish
Door nsr	Scratched	Over 25mm Not Thru Paint	Machine Polish
Door nsr	Scratched	UpTo 25mm Thru Paint	Smart Repair
Door nsf	Scratched	Over 25mm Not Thru Paint	Machine Polish
Door nsf	Chipped	1 To 5	Smart Repair
Wing nsf	Dented	2 Or Less UpTo 10mm	Smart Repair

Vehicle Splat

Splat Key

S1
Scratch/Paint defect to 30mm

S2
Scratch/Paint defect 30-100mm

S3
Scratch/Paint defect 100m +

D1
Dent/damage under 30mm

C2
Multiple Chips

Comments
<p>£65 ADDITIONAL FEE Last Service - 11/12/2023 at 35,904 miles (1 MAIN DEALER SERVICE)</p> <p>vibration at idle</p> <p>No mechanical inspection has been undertaken on this vehicle, any mechanical items noted are for reference only and cannot be relied on.</p>