

Vehicle Inspection Report

Date Inspected: 13/03/2025 14:21

Reg: RV11EWD

VIN: YV1CZ3056B1606251

NAMA Grading



Grade

5

Appraised By: Eastbourne Car Auctions

General Details

Make	VOLVO	Body Type	Estate	Doors	5
Model	XC90 SE AWD D5	Fuel Type	Diesel	Colour	Black
	AUTO - 2400cc	Transmission	Auto	Year of MFR	2011
Mileage	237,563 miles			Date First Reg	31/05/2011

Miscellaneous

V5 Location	Here
No. Keys	3

Tyres & Wheels

OSF Depth	5 mm	Alloys	Yes
NSF Depth	5 mm	Alloys That Need Refurb	4
OSR Depth	5 mm	Tools	No
NSR Depth	5 mm	Spare	No Spare

Interior Condition

Carpets	Average
Upholstery	Average
Seats	Poor
Parcel Shelf	Yes
Odour	No
Comments	all seats heavily worn

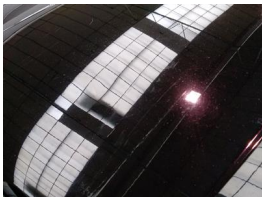
Service History

Service History	Yes
Stamps	

Extras

Metallic Paint	No	Central Locking	Yes	Interior	Leather	Electric Seats	Yes
Air Conditioning	Yes	Sun Roof	No	Elec Windows	4	Heated Seats	No
Stereo	Radio	Sat Nav	No	Cruise	Yes	Xenons	No
Keyless Entry	No	Towbar	Yes	Number of Seats	7	Parking Sensors	Rear
Phone Kit	No	Drv Airbag	Yes	Reversing Camera	No	EML	Yes

Damage Assessment



Bonnet  
Scratched  
  
Over 25mm Thru Paint  
  
Refinish



Bumper Front  
  
Poor Previous Repair  
  
Poor Paint  
  
Refinish

Wing nsf  
  
Scratched  
  
Over 25mm Not Thru Paint  
  
Machine Polish



**Wing nsf**

Chipped  
1 To 5  
Smart  
Repair



**Door  
Mirror  
Assy nsf**

Scratched  
(Painted)  
Over  
25mm  
Thru Paint  
Smart  
Repair



**Door nsf**

Dented  
Over  
30mm  
Repair  
and  
Refinish



**Door nsr**

Dented  
With Paint  
Damage  
Repair  
and  
Refinish



**Qtr Panel  
nsr**

Poor  
Previous  
Repair  
Poor Paint  
Refinish



**Bumper  
Rear**

Dented  
With Paint  
Damage  
Repair  
and  
Refinish



**Boot Lid**

Scratched  
Over  
25mm  
Thru Paint  
Refinish



**Qtr Panel  
osr**

Scratched  
Over  
25mm  
Thru Paint  
Refinish



**Door osr**

Dented  
With Paint  
Damage  
Repair  
and  
Refinish



**Door osf**

Dented  
With Paint  
Damage  
Repair  
and  
Refinish



**Wing osf**

Dented  
With Paint  
Damage  
Repair  
and  
Refinish



**Roof**

Scratched  
Over  
25mm  
Thru Paint  
Refinish

**Bonnet**

Dented  
Between  
10mm +  
30mm  
Smart  
Repair

Damage Lines			
Component	Condition	Severity	Repair
Bonnet	Scratched	Over 25mm Thru Paint	Refinish
Bumper Front	Poor Previous Repair	Poor Paint	Refinish
Wing nsf	Scratched	Over 25mm Not Thru Paint	Machine Polish
Wing nsf	Chipped	1 To 5	Smart Repair
Door Mirror Assy nsf	Scratched (Painted)	Over 25mm Thru Paint	Smart Repair
Door nsf	Dented	Over 30mm	Repair and Refinish
Door nsr	Dented	With Paint Damage	Repair and Refinish
Qtr Panel nsr	Poor Previous Repair	Poor Paint	Refinish
Bumper Rear	Dented	With Paint Damage	Repair and Refinish
Boot Lid	Scratched	Over 25mm Thru Paint	Refinish
Qtr Panel osr	Scratched	Over 25mm Thru Paint	Refinish
Door osr	Dented	With Paint Damage	Repair and Refinish
Door osf	Dented	With Paint Damage	Repair and Refinish
Wing osf	Dented	With Paint Damage	Repair and Refinish
Roof	Scratched	Over 25mm Thru Paint	Refinish
Bonnet	Dented	Between 10mm + 30mm	Smart Repair

Vehicle Splat

Splat Key

**S3**  
Scratch/Paint defect 100m +

**D3**  
Dent/damage 100mm +

**C2**  
Multiple Chips

**PP**  
Poor Previous

Comments
£65 ADDITIONAL FEE EXPIRED MOT. Last Service - 18.03..2024 at 221840 miles (14 services)
eml on and traction control light
<b>No mechanical inspection has been undertaken on this vehicle, any mechanical items noted are for reference only and cannot be relied on.</b>