

Vehicle Inspection Report

Date Inspected: 29/04/2025 15:50

Inspected By: toby

Reg: YN63YLT

VIN: 1C4RJFHJ9EC284366

NAMA Grading



Grade

4

Appraised By: Eastbourne Car Auctions

General Details

Make	JEEP	Body Type	Estate	Doors	5
Model	GRAND CHEROKEE HEMI SRT8 - 6417cc	Fuel Type	Petrol	Colour	Red
Mileage	119,424 miles	Transmission	Auto	Year of MFR	2013
				Date First Reg	12/11/2013

Miscellaneous

V5 Location	Here
MOT Location	Here
MOT Expiry	05/11/2025
No. Keys	2

Tyres & Wheels

OSF Depth	5 mm	Alloys	Yes
NSF Depth	5 mm	Alloys That Need Refurb	4
OSR Depth	5 mm	Tools	No
NSR Depth	5 mm	Spare	No Spare

Interior Condition

Carpets	Average
Upholstery	Poor
Seats	Average
Parcel Shelf	No
Odour	No

Service History

Service History
Stamps

Extras

Metallic Paint	Yes	Central Locking	Yes	Interior	Half Leather	Electric Seats	Yes
Air Conditioning	Yes	Sun Roof	Yes	Elec Windows	4	Heated Seats	No
Stereo	Radio	Sat Nav	Built In	Cruise	Yes	Xenons	No
Keyless Entry	Yes	Towbar	Yes	Number of Seats	5	Parking Sensors	Front & Rear
Phone Kit	Yes	Drv Airbag	Yes	Reversing Camera	Yes	EML	No

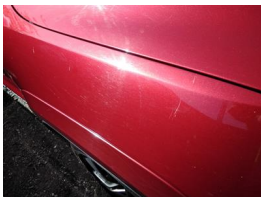
Damage Assessment



Bumper Front
Scratched
Over 100mm Thru Paint
Refinish



Bonnet
Chipped
1 To 5
Smart Repair



Wing osf
Scratched
Over 25mm Thru Paint
Refinish

Door osr
Scratched
Over

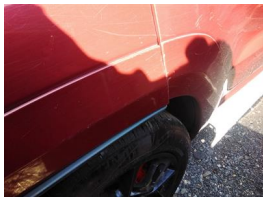


Door osf
Chipped
Multiple Chips
Refinish

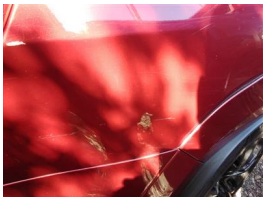
25mm Not Thru Paint
Machine Polish



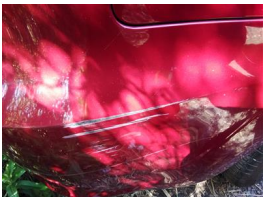
Door osr
Chipped
1 To 5
Smart Repair



Qtr Panel Arch Extension os
Scratched (Painted)
Over 25mm Thru Paint
Smart Repair



Qtr Panel osr
Scratched
Over 25mm Thru Paint
Refinish



Bumper Rear
Scratched
Over 100mm Thru Paint
Refinish

Boot Lid
Scratched
Over 25mm Not Thru Paint
Machine Polish

Boot Lid
Scratched
Over 25mm Not Thru Paint
Machine Polish

Qtr Panel nsr
Scratched
Over 25mm Not Thru Paint
Machine Polish



Qtr Panel nsr
Chipped
1 To 5
Smart Repair

Qtr Panel Arch Extension ns
Scratched (Painted)
Over 25mm Not Thru Paint
Machine Polish

Door nsr
Scratched
Over 25mm Not Thru Paint
Machine Polish



Door nsr
Chipped
1 To 5
Smart Repair

Door nsf
Scratched
Over 25mm Not Thru Paint
Machine Polish



Door nsf
Chipped
1 To 5
Smart Repair

Wing nsf
Scratched
Over 25mm Not Thru Paint
Machine Polish



Wing nsf
Chipped
1 To 5
Smart Repair



Screen Front
Chipped
UpTo 10mm
Smart Repair

Damage Lines			
Component	Condition	Severity	Repair
Bumper Front	Scratched	Over 100mm Thru Paint	Refinish
Bonnet	Chipped	1 To 5	Smart Repair
Wing osf	Scratched	Over 25mm Thru Paint	Refinish
Door osf	Chipped	Multiple Chips	Refinish
Door osr	Scratched	Over 25mm Not Thru Paint	Machine Polish
Door osr	Chipped	1 To 5	Smart Repair
Qtr Panel Arch Extension os	Scratched (Painted)	Over 25mm Thru Paint	Smart Repair
Qtr Panel osr	Scratched	Over 25mm Thru Paint	Refinish
Bumper Rear	Scratched	Over 100mm Thru Paint	Refinish
Boot Lid	Scratched	Over 25mm Not Thru Paint	Machine Polish
Boot Lid	Scratched	Over 25mm Not Thru Paint	Machine Polish
Qtr Panel nsr	Scratched	Over 25mm Not Thru Paint	Machine Polish
Qtr Panel nsr	Chipped	1 To 5	Smart Repair
Qtr Panel Arch Extension ns	Scratched (Painted)	Over 25mm Not Thru Paint	Machine Polish
Door nsr	Scratched	Over 25mm Not Thru Paint	Machine Polish
Door nsr	Chipped	1 To 5	Smart Repair
Door nsf	Scratched	Over 25mm Not Thru Paint	Machine Polish
Door nsf	Chipped	1 To 5	Smart Repair
Wing nsf	Scratched	Over 25mm Not Thru Paint	Machine Polish
Wing nsf	Chipped	1 To 5	Smart Repair
Screen Front	Chipped	UpTo 10mm	Smart Repair

Vehicle Splat

The diagram illustrates the layout of a vehicle, showing the front, rear, and side views. The components are labeled as follows:

- Front View (Left Side):**
 - Hood: S3
 - Front Bumper: S3
 - Headlights: C2
 - Front Fender: C2
 - Front Door: C2
 - Front Seat: C2
 - Front Trunk: C2
 - Front Wheel: S3
- Rear View (Right Side):**
 - Trunk: S3
 - Rear Bumper: S3
 - Taillights: C2
 - Rear Fender: C2
 - Rear Door: C2
 - Rear Seat: C2
 - Rear Trunk: C2
 - Rear Wheel: S3

Splat Key

S3
Scratch/Paint defect 100m +

C2
Multiple Chips

Comments

COPY V5 ONLY Last Service - 30/10/2023 at 82,688 miles (16 SERVICES (11 MAIN DEALER))

osr arch trim insecure and engine tapping

No mechanical inspection has been undertaken on this vehicle, any mechanical items noted are for reference only and cannot be relied on.