

Vehicle Inspection Report

Date Inspected: 24/04/2025 14:56

Reg: LA18XRJ
VIN: 6FPPXXMJ2PJT73081

NAMA Grading



Grade
5

Appraised By: Eastbourne Car Auctions

General Details

Make	FORD	Fuel Type	Diesel	Doors	4
Model	RANGER XLT 4X4 DCB TDCI - 2198cc	Transmission	Manual	Colour	Black
Mileage	147416 miles	Gears	6	Year of MFR	2018
				Date First Reg	27/07/2018

Miscellaneous

V5 Location
No. Keys 2

Tyres & Wheels

OSF Depth	7 mm	Alloys	Yes
NSF Depth	7 mm	Alloys That Need Refurb	2
OSR Depth	7 mm	Tools	No
NSR Depth	7 mm	Spare	No Spare

Interior Condition

Carpets	Average
Upholstery	Average
Seats	Average
Parcel Shelf	No
Odour	No

Service History

Service No
History
Stamps

Extras

Metallic Paint	Yes	Central Locking	Yes	Interior	Cloth	Electric Seats	No
Air Conditioning	Yes	Sun Roof	No	Elec Windows	4	Heated Seats	No
Stereo	Radio	Sat Nav	No	Cruise	No	Xenons	No
Keyless Entry	No	Towbar	Yes	Number of Seats	5	Parking Sensors	Front & Rear
Phone Kit	Yes	Drv Airbag	Yes	Reversing Camera	Yes	EML	No

Damage Assessment



Wing osf
Chipped
1 To 5
Smart Repair



Wing osf
Dented
2 Or Less
UpTo 10mm
Smart Repair

Wing osf
Scratched
Over 25mm Not Thru Paint
Machine Polish



Door osf
Scratched

Over
25mm
Thru Paint

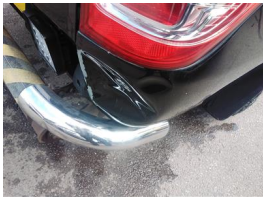
Refinish



Door osr
Scratched

Over
25mm
Thru Paint

Refinish



Qtr Panel osr

Dented

With Paint
Damage

Repair
and
Refinish



Tailgate
Scratched

Over
25mm
Thru Paint

Refinish



Qtr Panel nsr

Dented

With Paint
Damage

Repair
and
Refinish

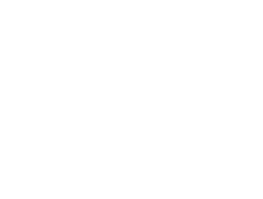


Door nsr

Chipped

1 To 5

Smart
Repair



Door nsr

Scratched

Over
25mm Not
Thru Paint

Machine
Polish



Door nsf

Dented

Between
10mm +
30mm

Smart
Repair



Door nsf

Scratched

Over
25mm Not
Thru Paint

Machine
Polish

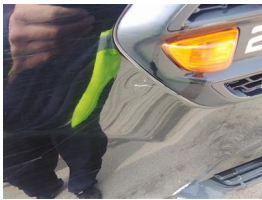


Door Mirror Assy nsf

Broken

Needs
Replaced

Replace



Wing nsf

Dented

2 Or Less
UpTo
10mm

Smart
Repair



Wing nsf

Scratched

Over
25mm Not
Thru Paint

Machine
Polish



Wing nsf

Chipped

1 To 5

Smart
Repair



Bumper Front

Scratched

Over
100mm
Thru Paint

Refinish



Bonnet

Scratched

Over
25mm
Thru Paint

Refinish



Roof

Dented

Over
30mm

Repair
and
Refinish



Screen Front

Chipped

UpTo
10mm

Smart
Repair



Seat Base Cover osf

Torn

Over 3mm

Replace



Seat Base Cover nsf

Scuffed

UpTo

Smart
Repair

Component

Component	Condition	Severity	Repair
Wing osf	Chipped	1 To 5	Smart Repair
Wing osf	Dented	2 Or Less UpTo 10mm	Smart Repair
Wing osf	Scratched	Over 25mm Not Thru Paint	Machine Polish
Door osf	Scratched	Over 25mm Thru Paint	Refinish
Door osr	Scratched	Over 25mm Thru Paint	Refinish
Qtr Panel osr	Dented	With Paint Damage	Repair and Refinish
Tailgate	Scratched	Over 25mm Thru Paint	Refinish
Qtr Panel nsr	Dented	With Paint Damage	Repair and Refinish
Door nsr	Chipped	1 To 5	Smart Repair
Door nsr	Scratched	Over 25mm Not Thru Paint	Machine Polish
Door nsf	Dented	Between 10mm + 30mm	Smart Repair
Door nsf	Scratched	Over 25mm Not Thru Paint	Machine Polish
Door Mirror Assy nsf	Broken	Replace	Replace
Wing nsf	Dented	2 Or Less UpTo 10mm	Smart Repair
Wing nsf	Scratched	Over 25mm Not Thru Paint	Machine Polish
Wing nsf	Chipped	1 To 5	Smart Repair
Bumper Front	Scratched	Over 100mm Thru Paint	Refinish
Bonnet	Scratched	Over 25mm Thru Paint	Refinish
Roof	Dented	Over 30mm	Repair and Refinish
Screen Front	Chipped	UpTo 10mm	Smart Repair
Seat Base Cover osf	Torn	Over 3mm	Replace
Seat Base Cover nsf	Scuffed	UpTo 25mm	Smart Repair

A top-down schematic diagram of a car interior. The layout includes a driver's seat on the left, a front passenger seat, and a rear bench seat. Various components are labeled with red text: 'S3' for side sensors on the front seats, 'D2' for multiple interior dome and floor sensors, 'D1' for sensors on the front seats, 'C2' for sensors on the front door panels, 'S2' for sensors on the rear bench seat, and 'D3' for a sensor on the driver's side floor. The front of the car is indicated by a 'FRONT' label and an arrow on the right side.

S2
Scratch/Paint defect 30-100mm

S3
Scratch/Paint defect 100m +

D1
Dent/damage under 30mm

D2
Dent/damage 30-100mm

D3
Dent/damage 100mm +

C1
Single Chip

C2
Multiple Chips

Comments

gears sometimes fills stiff to engage

No mechanical inspection has been undertaken on this vehicle, any mechanical items noted are for reference only and cannot be relied on.