

Vehicle Inspection Report

Date Inspected: 28/03/2025 09:15

Reg: WP66XDW

VIN: VF30UBHZMGS204880

NAMA Grading



Grade

3

Appraised By: Eastbourne Car Auctions

General Details

Make	PEUGEOT	Body Type	Hatchback	Doors	5
Model	3008 ALLURE BLUE HDI S/S - 1560cc	Fuel Type	Diesel	Colour	Black
Mileage	63,286 miles	Transmission	Manual	Year of MFR	2017
		Gears	6	Date First Reg	20/02/2017

Miscellaneous

V5 Location	Here
No. Keys	2

Tyres & Wheels

OSF Depth	5 mm	Alloys	Yes
NSF Depth	5 mm	Alloys That Need Refurb	4
OSR Depth	5 mm	Tools	No
NSR Depth	5 mm	Spare	No Spare

Interior Condition

Carpets	Average
Upholstery	Average
Seats	Average
Parcel Shelf	Yes
Odour	No

Service History

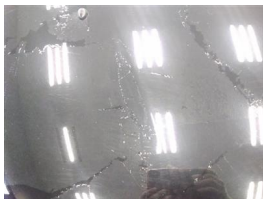
Service History Stamps

Service Yes

Extras

Metallic Paint	No	Central Locking	Yes	Interior	Half Leather	Electric Seats	No
Air Conditioning	Yes	Sun Roof	Yes	Elec Windows	4	Heated Seats	No
Stereo	Radio	Sat Nav	Built In	Cruise	Yes	Xenons	No
Keyless Entry	No	Towbar	No	Number of Seats	5	Parking Sensors	Rear
Phone Kit	Yes	Drv Airbag	Yes	Reversing Camera	Yes	EML	No

Damage Assessment



Bonnet

Chipped
Multiple Chips
Refinish



Bumper Front

Scratched
25 to 100mm Thru Paint
Smart Repair

Bumper Front

Scratched
Over 25mm Not Thru Paint
Machine Polish

Wing nsf

Scratched
Over 25mm Not

Door nsf

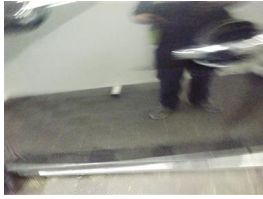
Scratched
Over 25mm Not

Thru Paint
Machine
Polish



Wing nsf
Chipped
1 To 5
Smart
Repair

Thru Paint
Machine
Polish



Door nsf
Chipped
1 To 5
Smart
Repair

Door nsr
Scratched
Over
25mm Not
Thru Paint
Machine
Polish



Qtr Panel nsr
Dented
Over
30mm
Repair
and
Refinish

Bumper Rear
Scratched
Over
25mm Not
Thru Paint
Machine
Polish



Bumper Rear
Chipped
Multiple
Chips
Smart
Repair



Boot Lid
Chipped
1 To 5
Smart
Repair

Qtr Panel osr
Scratched
Over
25mm Not
Thru Paint
Machine
Polish



Qtr Panel osr
Chipped
1 To 5
Smart
Repair

Door osr
Scratched
Over
25mm Not
Thru Paint
Machine
Polish



Door osr
Chipped
1 To 5
Smart
Repair

Door osf
Scratched
Over
25mm Not
Thru Paint
Machine
Polish



Door osf
Chipped
1 To 5
Smart
Repair

Wing osf
Scratched
Over
25mm Not
Thru Paint
Machine
Polish



Front TowEye Cvr
Missing
Needs
Replaced
Replace

Damage Lines			
Component	Condition	Severity	Repair
Bonnet	Chipped	Multiple Chips	Refinish
Bumper Front	Scratched	25 to 100mm Thru Paint	Smart Repair
Bumper Front	Scratched	Over 25mm Not Thru Paint	Machine Polish
Wing nsf	Scratched	Over 25mm Not Thru Paint	Machine Polish
Wing nsf	Chipped	1 To 5	Smart Repair
Door nsf	Scratched	Over 25mm Not Thru Paint	Machine Polish
Door nsf	Chipped	1 To 5	Smart Repair
Door nsr	Scratched	Over 25mm Not Thru Paint	Machine Polish
Qtr Panel nsr	Dented	Over 30mm	Repair and Refinish
Bumper Rear	Scratched	Over 25mm Not Thru Paint	Machine Polish
Bumper Rear	Chipped	Multiple Chips	Smart Repair
Boot Lid	Chipped	1 To 5	Smart Repair
Qtr Panel osr	Scratched	Over 25mm Not Thru Paint	Machine Polish
Qtr Panel osr	Chipped	1 To 5	Smart Repair
Door osr	Scratched	Over 25mm Not Thru Paint	Machine Polish
Door osr	Chipped	1 To 5	Smart Repair
Door osf	Scratched	Over 25mm Not Thru Paint	Machine Polish
Door osf	Chipped	1 To 5	Smart Repair
Wing osf	Scratched	Over 25mm Not Thru Paint	Machine Polish
Front TowEye Cvr	Missing	Replace	Replace

[illegible]

Splat Key

S2	Scratch/Paint defect 30-100mm
D3	Dent/damage 100mm +
C2	Multiple Chips

Comments
<p>Parking Brake Fault,abs and traction light is on Last Service - 28/11/2022 at 47,865 miles (5 SERVICES(4 MAIN DEALER)</p> <p>No mechanical inspection has been undertaken on this vehicle, any mechanical items noted are for reference only and cannot be relied on.</p>