

Vehicle Inspection Report

Date Inspected: 24/03/2025 12:41

Reg: GY69XHD

VIN: JN1JGAT32U0050283

NAMA Grading



Grade

3

Appraised By: Eastbourne Car Auctions

General Details

Make	NISSAN	Body Type	Estate	Doors	5
Model	X-TRAIL N-CONNECTA DIG-T - 1332cc	Fuel Type	Petrol	Colour	Blue
		Transmission	Auto	Year of MFR	2019
Mileage	47,244 miles			Date First Reg	30/10/2019

Miscellaneous

V5 Location	Here
MOT Location	Here
MOT Expiry	16/07/2025
No. Keys	2

Tyres & Wheels

OSF Depth	5 mm	Alloys	Yes
NSF Depth	5 mm	Alloys That Need Refurb	4
OSR Depth	5 mm	Tools	No
NSR Depth	5 mm	Spare	No Spare

Interior Condition

Carpets	Average
Upholstery	Average
Seats	Average
Parcel Shelf	No
Odour	No

Service History

Service History
Stamps

Extras

Metallic Paint	Yes	Central Locking	Yes	Interior	Cloth	Electric Seats	No
Air Conditioning	Yes	Sun Roof	Yes	Elec Windows	4	Heated Seats	No
Stereo	Radio	Sat Nav	Built In	Cruise	Yes	Xenons	No
Keyless Entry	Yes	Towbar	No	Number of Seats	7	Parking Sensors	Front & Rear
Phone Kit	Yes	Drv Airbag	Yes	Reversing Camera	Yes	EML	No

Damage Assessment

Bumper Front

Scratched

Over 25mm Not Thru Paint

Machine Polish

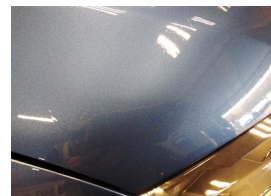


Bumper Front

Scratched

25 to 100mm Thru Paint

Smart Repair



Bonnet

Chipped

1 To 5

Smart Repair

Door osf

Scratched

Over

Door osr

Scratched

Over



Wing osf
Chipped
1 To 5
Smart
Repair

25mm Not
Thru Paint

Machine
Polish

25mm Not
Thru Paint

Machine
Polish



Door osr
Chipped
1 To 5
Smart
Repair

**Qtr Panel
osr**
Scratched

Over
25mm Not
Thru Paint

Machine
Polish



**Bumper
Rear**
Scratched

25 to
100mm
Thru Paint

Smart
Repair

**Bumper
Rear**

Scratched

Over
25mm Not
Thru Paint

Machine
Polish

Boot Lid
Scratched

Over
25mm Not
Thru Paint

Machine
Polish

**Qtr Panel
nsr**
Scratched

Over
25mm Not
Thru Paint

Machine
Polish



**Qtr Panel
nsr**
Chipped
1 To 5
Smart
Repair



Door nsr
Dented

With Paint
Damage

Repair
and
Refinish



Door nsf
Dented

With Paint
Damage

Repair
and
Refinish



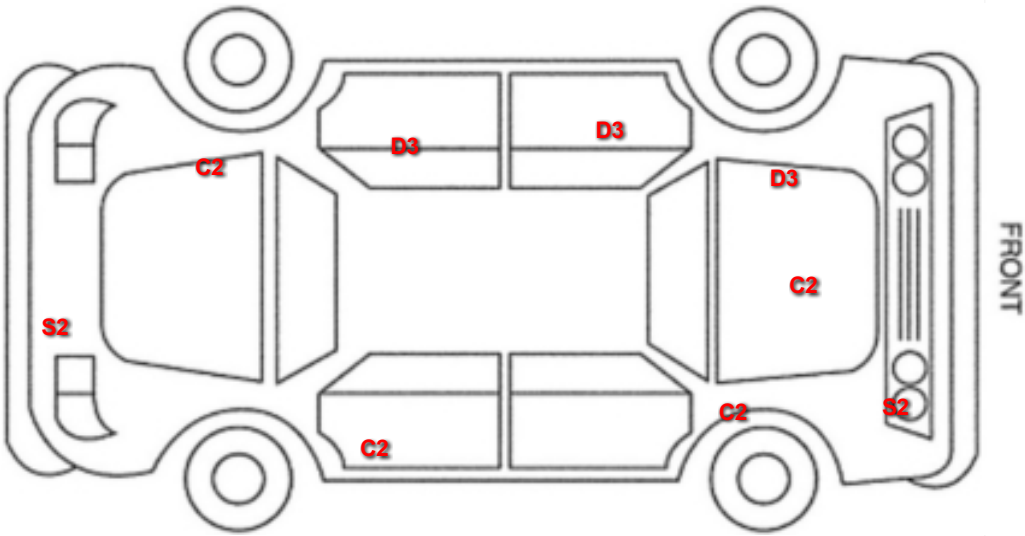
Wing nsf
Dented

Over
30mm

Repair
and
Refinish

Damage Lines			
Component	Condition	Severity	Repair
Bumper Front	Scratched	Over 25mm Not Thru Paint	Machine Polish
Bumper Front	Scratched	25 to 100mm Thru Paint	Smart Repair
Bonnet	Chipped	1 To 5	Smart Repair
Wing osf	Chipped	1 To 5	Smart Repair
Door osf	Scratched	Over 25mm Not Thru Paint	Machine Polish
Door osr	Scratched	Over 25mm Not Thru Paint	Machine Polish
Door osr	Chipped	1 To 5	Smart Repair
Qtr Panel osr	Scratched	Over 25mm Not Thru Paint	Machine Polish
Bumper Rear	Scratched	25 to 100mm Thru Paint	Smart Repair
Bumper Rear	Scratched	Over 25mm Not Thru Paint	Machine Polish
Boot Lid	Scratched	Over 25mm Not Thru Paint	Machine Polish
Qtr Panel nsr	Scratched	Over 25mm Not Thru Paint	Machine Polish
Qtr Panel nsr	Chipped	1 To 5	Smart Repair
Door nsr	Dented	With Paint Damage	Repair and Refinish
Door nsf	Dented	With Paint Damage	Repair and Refinish
Wing nsf	Dented	Over 30mm	Repair and Refinish

Vehicle Splat



Splat Key

S2
Scratch/Paint defect 30-100mm

D3
Dent/damage 100mm +

C2
Multiple Chips

Comments
<p>£65 ADDITIONAL FEE. Last Service - 03/07/2024 at 40,787 miles (1 main dealer service)</p> <p>eml and traction control light on.gearbox/engine judder and crash dection system fault</p> <p>No mechanical inspection has been undertaken on this vehicle, any mechanical items noted are for reference only and cannot be relied on.</p>