

Vehicle Inspection Report

Date Inspected: 28/03/2025 16:20

Reg: GU20NJZ

VIN: VR3UPHNSSLT001485

NAMA Grading



Grade

3

Appraised By: Eastbourne Car Auctions

General Details

|                |                         |                     |           |                       |            |
|----------------|-------------------------|---------------------|-----------|-----------------------|------------|
| <b>Make</b>    | PEUGEOT                 | <b>Body Type</b>    | Hatchback | <b>Doors</b>          | 5          |
| <b>Model</b>   | 208 ALLURE              | <b>Fuel Type</b>    | Petrol    | <b>Colour</b>         | Black      |
|                | PURETECH S/S A - 1200cc | <b>Transmission</b> | Auto      | <b>Year of MFR</b>    | 2020       |
| <b>Mileage</b> | 42,333 miles            |                     |           | <b>Date First Reg</b> | 13/06/2020 |

Miscellaneous

|                    |   |
|--------------------|---|
| <b>V5 Location</b> |   |
| <b>No. Keys</b>    | 2 |

Tyres & Wheels

|                  |      |                                |             |
|------------------|------|--------------------------------|-------------|
| <b>OSF Depth</b> | 5 mm | <b>Alloys</b>                  | Yes         |
| <b>NSF Depth</b> | 5 mm | <b>Alloys That Need Refurb</b> | 4           |
| <b>OSR Depth</b> | 5 mm | <b>Tools</b>                   | No          |
| <b>NSR Depth</b> | 5 mm | <b>Spare</b>                   | Space Saver |

Interior Condition

|                     |         |
|---------------------|---------|
| <b>Carpets</b>      | Good    |
| <b>Upholstery</b>   | Good    |
| <b>Seats</b>        | Average |
| <b>Parcel Shelf</b> | Yes     |
| <b>Odour</b>        | No      |

Service History

**Service No**  
**History**  
**Stamps**

Extras

|                         |       |                        |          |                         |              |                        |      |
|-------------------------|-------|------------------------|----------|-------------------------|--------------|------------------------|------|
| <b>Metallic Paint</b>   | Yes   | <b>Central Locking</b> | Yes      | <b>Interior</b>         | Half Leather | <b>Electric Seats</b>  | No   |
| <b>Air Conditioning</b> | Yes   | <b>Sun Roof</b>        | No       | <b>Elec Windows</b>     | 4            | <b>Heated Seats</b>    | No   |
| <b>Stereo</b>           | Radio | <b>Sat Nav</b>         | Built In | <b>Cruise</b>           | Yes          | <b>Xenons</b>          | No   |
| <b>Keyless Entry</b>    | No    | <b>Towbar</b>          | No       | <b>Number of Seats</b>  | 5            | <b>Parking Sensors</b> | Rear |
| <b>Phone Kit</b>        | Yes   | <b>Drv Airbag</b>      | Yes      | <b>Reversing Camera</b> | No           | <b>EML</b>             | No   |

Damage Assessment



**Bonnet**

Chipped

1 To 5

Smart  
Repair



**Bumper Front**

Scratched

Over  
100mm  
Thru Paint  
Refinish



**Screen Front**

Chipped

UpTo  
10mm

Smart  
Repair

**Wing osf**

Scratched

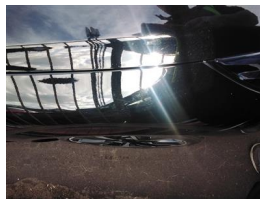
Over  
25mm Not

**Door osf**

Scratched

Over  
25mm Not

Thru Paint  
Machine  
Polish



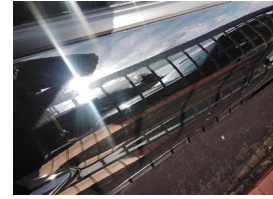
**Wing osf**  
Chipped  
1 To 5  
Smart  
Repair

Thru Paint  
Machine  
Polish



**Door osf**  
Chipped  
1 To 5  
Smart  
Repair

**Door osf**  
Scratched  
Over  
25mm Not  
Thru Paint  
Machine  
Polish



**Door osf**  
Chipped  
1 To 5  
Smart  
Repair

**Qtr Panel  
osr**  
Scratched  
Over  
25mm Not  
Thru Paint  
Machine  
Polish



**Qtr Panel  
osr**  
Chipped  
1 To 5  
Smart  
Repair



**Bumper  
Rear**  
Scratched  
25 to  
100mm  
Thru Paint  
Smart  
Repair

**Bumper  
Rear**  
Scratched  
Over  
25mm Not  
Thru Paint  
Machine  
Polish

**Boot Lid**  
Scratched  
Over  
25mm Not  
Thru Paint  
Machine  
Polish

**Qtr Panel  
nsr**  
Scratched  
Over  
25mm Not  
Thru Paint  
Machine  
Polish

**Door nsr**  
Scratched  
Over  
25mm Not  
Thru Paint  
Machine  
Polish



**Door nsr**  
Chipped  
1 To 5  
Smart  
Repair

**Door nsf**  
Scratched  
Over  
25mm Not  
Thru Paint  
Machine  
Polish



**Door nsf**  
Chipped  
1 To 5  
Smart  
Repair



**Wing nsf**  
Scratched  
Over  
25mm  
Thru Paint  
Refinish

| Damage Lines  |           |                          |                |
|---------------|-----------|--------------------------|----------------|
| Component     | Condition | Severity                 | Repair         |
| Bonnet        | Chipped   | 1 To 5                   | Smart Repair   |
| Bumper Front  | Scratched | Over 100mm Thru Paint    | Refinish       |
| Screen Front  | Chipped   | UpTo 10mm                | Smart Repair   |
| Wing osf      | Scratched | Over 25mm Not Thru Paint | Machine Polish |
| Wing osf      | Chipped   | 1 To 5                   | Smart Repair   |
| Door osf      | Scratched | Over 25mm Not Thru Paint | Machine Polish |
| Door osf      | Chipped   | 1 To 5                   | Smart Repair   |
| Door osf      | Scratched | Over 25mm Not Thru Paint | Machine Polish |
| Door osf      | Chipped   | 1 To 5                   | Smart Repair   |
| Qtr Panel osr | Scratched | Over 25mm Not Thru Paint | Machine Polish |
| Qtr Panel osr | Chipped   | 1 To 5                   | Smart Repair   |
| Bumper Rear   | Scratched | 25 to 100mm Thru Paint   | Smart Repair   |
| Bumper Rear   | Scratched | Over 25mm Not Thru Paint | Machine Polish |
| Boot Lid      | Scratched | Over 25mm Not Thru Paint | Machine Polish |
| Qtr Panel nsr | Scratched | Over 25mm Not Thru Paint | Machine Polish |
| Door nsr      | Scratched | Over 25mm Not Thru Paint | Machine Polish |
| Door nsr      | Chipped   | 1 To 5                   | Smart Repair   |
| Door nsf      | Scratched | Over 25mm Not Thru Paint | Machine Polish |
| Door nsf      | Chipped   | 1 To 5                   | Smart Repair   |
| Wing nsf      | Scratched | Over 25mm Thru Paint     | Refinish       |

Vehicle Splat

Splat Key

**S2**  
Scratch/Paint defect 30-100mm

**S3**  
Scratch/Paint defect 100m +

**C2**  
Multiple Chips

| Comments  |
|---|
| <p>No mechanical inspection has been undertaken on this vehicle, any mechanical items noted are for reference only and cannot be relied on.</p> |