

### Vehicle Inspection Report

Date Inspected: 11/04/2025 12:19

**Reg:** VK62UVV

**VIN:** SDPW2CBBBCD076679

### NAMA Grading



Grade

**4**

Appraised By: Eastbourne Car Auctions

### General Details

<b>Make</b>	MG	<b>Body Type</b>	Hatchback	<b>Doors</b>	5
<b>Model</b>	6 TSE GT DTI - 1849cc	<b>Fuel Type</b>	Diesel	<b>Colour</b>	Orange
<b>Mileage</b>	93,528 miles	<b>Transmission</b>	Manual	<b>Year of MFR</b>	2013
		<b>Gears</b>	6	<b>Date First Reg</b>	23/01/2013

### Miscellaneous

<b>V5 Location</b>	Here
<b>MOT Location</b>	Here
<b>MOT Expiry</b>	28/01/2026
<b>No. Keys</b>	2

### Tyres & Wheels

<b>OSF Depth</b>	4 mm	<b>Alloys</b>	Yes
<b>NSF Depth</b>	3 mm	<b>Alloys That Need Refurb</b>	4
<b>OSR Depth</b>	5 mm	<b>Tools</b>	Yes
<b>NSR Depth</b>	5 mm	<b>Spare</b>	Space Saver

### Interior Condition

<b>Carpets</b>	Average
<b>Upholstery</b>	Average
<b>Seats</b>	Average
<b>Parcel Shelf</b>	Yes
<b>Odour</b>	No

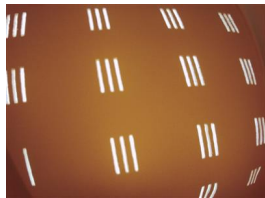
### Service History

**Service History Stamps**

Service Yes

### Extras

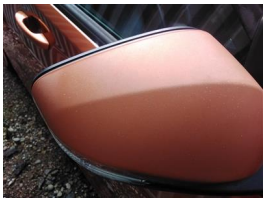
<b>Metallic Paint</b>	Yes	<b>Central Locking</b>	Yes	<b>Interior</b>	Leather	<b>Electric Seats</b>	Yes
<b>Air Conditioning</b>	Yes	<b>Sun Roof</b>	No	<b>Elec Windows</b>	4	<b>Heated Seats</b>	Yes
<b>Stereo</b>	Radio	<b>Sat Nav</b>	Built In	<b>Cruise</b>	Yes	<b>Xenons</b>	No
<b>Keyless Entry</b>	No	<b>Towbar</b>	No	<b>Number of Seats</b>	5	<b>Parking Sensors</b>	Front & Rear
<b>Phone Kit</b>	Yes	<b>Drv Airbag</b>	Yes	<b>Reversing Camera</b>	No	<b>EML</b>	No



**Bonnet**  
Chipped  
1 To 5  
Smart  
Repair



**Screen  
Front**  
Chipped  
UpTo  
10mm  
Smart  
Repair



**Door  
Mirror  
Assy osf**  
Scratched  
(Painted)  
Over  
25mm  
Thru Paint  
Smart  
Repair



**Bumper  
Front**  
Chipped  
Multiple  
Chips  
Smart  
Repair

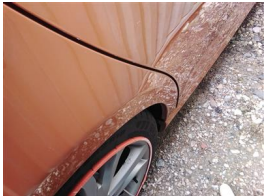


**Door osf**  
Chipped  
Multiple  
Chips  
Refinish



**Door osr**  
Scratched  
Over  
25mm Not  
Thru Paint  
Machine  
Polish

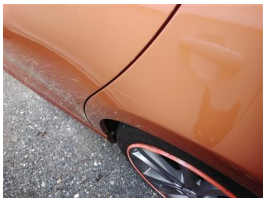
**Door osr**  
Chipped  
1 To 5  
Smart  
Repair



**Qtr Panel  
osr**  
Dented  
Between  
10mm +  
30mm  
Smart  
Repair



**Bumper  
Rear**  
Poor  
Previous  
Repair  
Rippled  
UpTo 30%  
Repair  
and  
Refinish



**Qtr Panel  
nsr**  
Dented  
With Paint  
Damage  
Repair  
and  
Refinish



**Door nsr**  
Poor  
Previous  
Repair  
Poor Paint  
Refinish



**Door nsf**  
Poor  
Previous  
Repair  
Poor Paint  
Refinish



**Wing nsf**  
Chipped  
1 To 5  
Smart  
Repair

**Roof**  
Chipped  
1 To 5  
Smart  
Repair

Damage Lines			
Component	Condition	Severity	Repair
Bonnet	Chipped	1 To 5	Smart Repair
Bumper Front	Scratched	Over 25mm Not Thru Paint	Machine Polish
Bumper Front	Chipped	Multiple Chips	Smart Repair
Screen Front	Chipped	UpTo 10mm	Smart Repair
Door Mirror Assy osf	Scratched (Painted)	Over 25mm Thru Paint	Smart Repair
Door osf	Chipped	Multiple Chips	Refinish
Door osr	Scratched	Over 25mm Not Thru Paint	Machine Polish
Door osr	Chipped	1 To 5	Smart Repair
Qtr Panel osr	Dented	Between 10mm + 30mm	Smart Repair
Bumper Rear	Poor Previous Repair	Rippled UpTo 30%	Repair and Refinish
Qtr Panel nsr	Dented	With Paint Damage	Repair and Refinish
Door nsr	Poor Previous Repair	Poor Paint	Refinish
Door nsf	Poor Previous Repair	Poor Paint	Refinish
Wing nsf	Chipped	1 To 5	Smart Repair
Roof	Chipped	1 To 5	Smart Repair

Vehicle Splat

The diagram illustrates a vehicle from a top-down perspective, showing its internal structure and components. The labels are as follows:

- PP**: Located on the front and rear side panels.
- C2**: Located in the center of the front and rear sections, and on the side panels.
- D1**: Located on the front and rear bumpers.
- D3**: Located on the front and rear side panels.

Splat Key

**D1**  
Dent/damage under 30mm

**D3**  
Dent/damage 100mm +

**C2**  
Multiple Chips

**PP**  
Poor Previous

Comments

Clutch replaced 23/8/2024 @ 90673 miles. Last Service - 05/05/2023 at 86,658 miles (10 services (6 m vibration at idle

**No mechanical inspection has been undertaken on this vehicle, any mechanical items noted are for reference only and cannot be relied on.**