

### Vehicle Inspection Report

Date Inspected: 28/03/2025 10:33

**Reg:** BG58USO

**VIN:** SAJAC061497R39962

### NAMA Grading



Grade

**4**

Appraised By: Eastbourne Car Auctions

### General Details

<b>Make</b>	JAGUAR	<b>Body Type</b>	Saloon	<b>Doors</b>	4
<b>Model</b>	XF PREMIUM LUXURY D V6 A - 2720cc	<b>Fuel Type</b>	Diesel	<b>Colour</b>	Grey
<b>Mileage</b>	87612 miles	<b>Transmission</b>	Auto	<b>Year of MFR</b>	2008
				<b>Date First Reg</b>	14/11/2008

### Miscellaneous

<b>V5 Location</b>	
<b>No. Keys</b>	1

### Tyres & Wheels

<b>OSF Depth</b>	6 mm	<b>Alloys</b>	Yes
<b>NSF Depth</b>	6 mm	<b>Alloys That Need Refurb</b>	4
<b>OSR Depth</b>	7 mm	<b>Tools</b>	Yes
<b>NSR Depth</b>	7 mm	<b>Spare</b>	Space Saver

### Interior Condition

<b>Carpets</b>	Average
<b>Upholstery</b>	Average
<b>Seats</b>	Average
<b>Parcel Shelf</b>	No
<b>Odour</b>	No

### Service History

**Service No History Stamps**

### Extras

<b>Metallic Paint</b>	Yes	<b>Central Locking</b>	Yes	<b>Interior</b>	Leather	<b>Electric Seats</b>	Yes
<b>Air Conditioning</b>	Yes	<b>Sun Roof</b>	No	<b>Elec Windows</b>	4	<b>Heated Seats</b>	No
<b>Stereo</b>	Radio	<b>Sat Nav</b>	Built In	<b>Cruise</b>	Yes	<b>Xenons</b>	No
<b>Keyless Entry</b>	Yes	<b>Towbar</b>	No	<b>Number of Seats</b>	5	<b>Parking Sensors</b>	Front & Rear
<b>Phone Kit</b>	Yes	<b>Drv Airbag</b>	Yes	<b>Reversing Camera</b>	Yes	<b>EML</b>	No

### Damage Assessment



**Bonnet**  
Dented  
Hail - Moderate  
Repair and Refinish



**Wing osf**  
Dented  
2 Or Less UpTo 10mm  
Smart Repair

**Wing nsf**  
Scratched  
Over 25mm Not

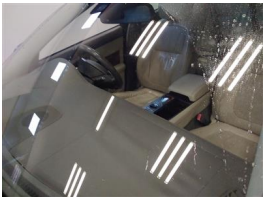
**Bumper Front**  
Scratched  
Over 25mm Not Thru Paint  
Machine Polish



**Bumper Front**

Scratched  
  
25 to 100mm  
Thru Paint  
  
Smart Repair

Thru Paint  
  
Machine Polish



**Screen Front**

Chipped  
  
UpTo 10mm  
  
Smart Repair



**Door nsf**

Dented  
  
With Paint Damage  
  
Repair and Refinish



**Door nsr**

Dented  
  
Over 30mm  
  
Repair and Refinish



**Roof**

Dented  
  
Hail - Moderate  
  
Repair and Refinish



**Qtr Panel nsr**

Dented  
  
With Paint Damage  
  
Repair and Refinish

**Bumper Rear**

Scratched  
  
Over 25mm Not Thru Paint  
  
Machine Polish



**Bumper Rear**

Scratched  
  
25 to 100mm Thru Paint  
  
Smart Repair

**Boot Lid**

Scratched  
  
Over 25mm Not Thru Paint  
  
Machine Polish

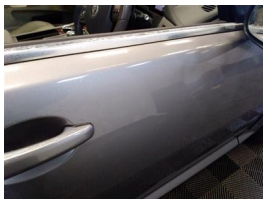


**Qtr Panel osr**

Dented  
  
2 Or Less UpTo 10mm  
  
Smart Repair

**Door osr**

Dented  
  
2 Or Less UpTo 10mm  
  
Smart Repair



**Door osf**

Dented  
  
Over 30mm  
  
Repair and Refinish

Damage Lines			
Component	Condition	Severity	Repair
Bonnet	Dented	Hail - Moderate	Repair and Refinish
Wing osf	Dented	2 Or Less UpTo 10mm	Smart Repair
Bumper Front	Scratched	Over 25mm Not Thru Paint	Machine Polish
Bumper Front	Scratched	25 to 100mm Thru Paint	Smart Repair
Wing nsf	Scratched	Over 25mm Not Thru Paint	Machine Polish
Screen Front	Chipped	UpTo 10mm	Smart Repair
Door nsf	Dented	With Paint Damage	Repair and Refinish
Door nsr	Dented	Over 30mm	Repair and Refinish
Roof	Dented	Hail - Moderate	Repair and Refinish
Qtr Panel nsr	Dented	With Paint Damage	Repair and Refinish
Bumper Rear	Scratched	Over 25mm Not Thru Paint	Machine Polish
Bumper Rear	Scratched	25 to 100mm Thru Paint	Smart Repair
Boot Lid	Scratched	Over 25mm Not Thru Paint	Machine Polish
Qtr Panel osr	Dented	2 Or Less UpTo 10mm	Smart Repair
Door osr	Dented	2 Or Less UpTo 10mm	Smart Repair
Door osf	Dented	Over 30mm	Repair and Refinish

Vehicle Splat

The diagram illustrates a vehicle's layout with the following labels:

- S2**: Front grille and rear window.
- D1**: Front and rear fenders.
- D3**: Front and rear seats, front and rear doors, and front and rear side panels.
- C2**: Front door.

**Splat Key**

**S2**  
Scratch/Paint defect 30-100mm

**D1**  
Dent/damage under 30mm

**D3**  
Dent/damage 100mm +

**C2**  
Multiple Chips

Comments
<p>bootlid moulding broken</p> <p><b>No mechanical inspection has been undertaken on this vehicle, any mechanical items noted are for reference only and cannot be relied on.</b></p>