



VEHICLE INSPECTION REPORT

KO66VY

Mercedes-Benz E Class E220d AMG Line 4dr 9G-Tronic

Inspection		Vehicle	
Serious Damage?	No	VAT	Margin
		V5	Present

nama
GRADE
3

Details

Reg. date	22/02/2017	Body Style	Saloon	Last service miles	100,230
Year	2017	Keys	2	MOT Due	07/05/2027
Mileage	101,049 Miles Warranted	Service history	Yes	Gearbox	AUTOMATIC
Fuel Type	Diesel	Service documents	Printout	Gears	9
Colour	BLUE	Number of stamps	2	Doors	4
VIN	WDD2130042A213786	Last service date	19/03/2026		

Last service 19/03/2026 at 100,230 miles- 2 services
MOT in 2025 recorded in KM on MOT history Engine running lumpy
Noisy when revved
Intermittent hunting

Tyres

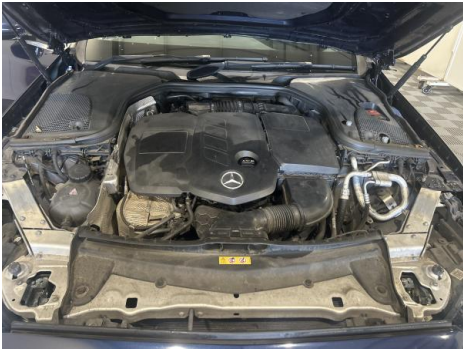
NSF	BUDGET	3.0mm
NSR	BUDGET	2.0mm
OSF	BUDGET	4.0mm
OSR	BUDGET	4.0mm
Spare		

Features

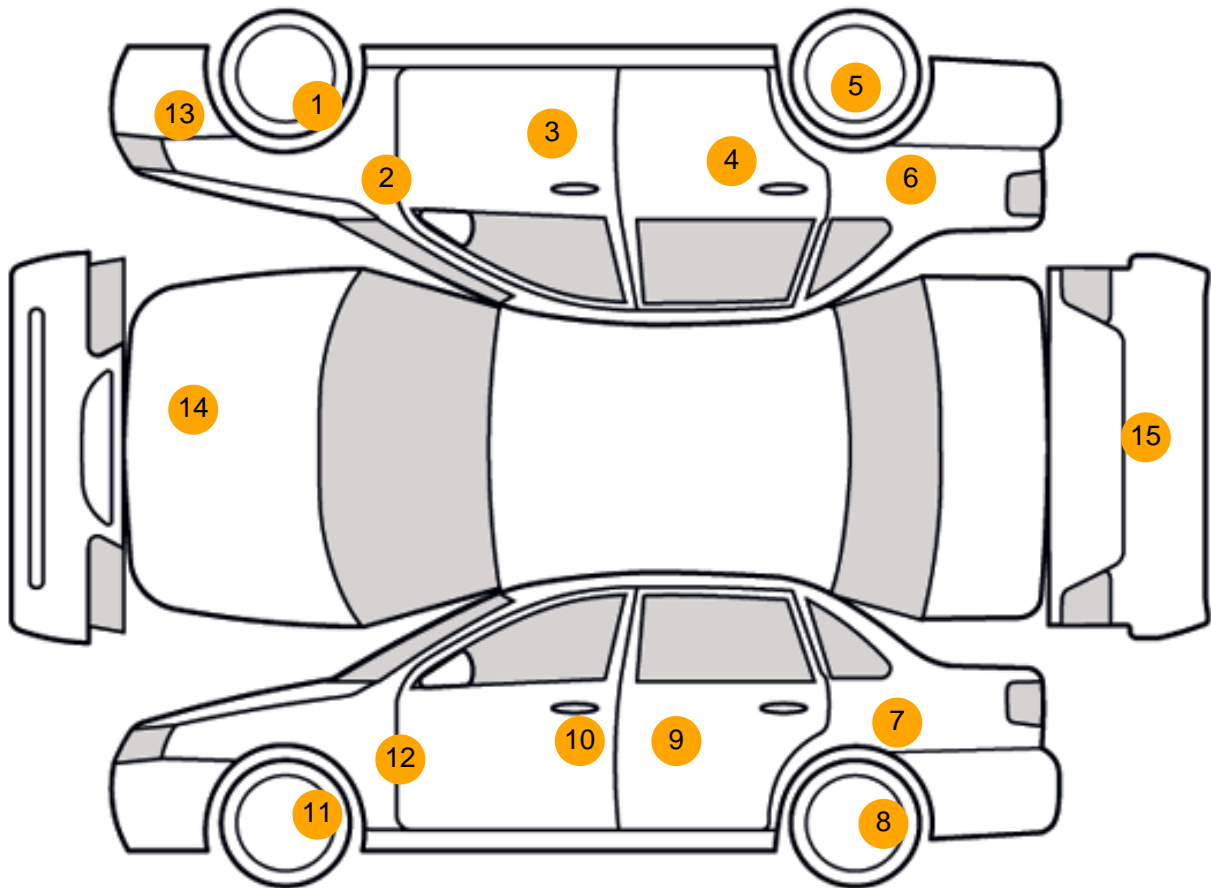
- Bluetooth connection
- Navigation system
- Radio/CD
- Climate control
- Metallic Paint
- Traction control
- Leather seat trim
- Cruise control
- Park assist camera
- Body coloured bumpers
- Front electric windows
- ABS
- Tyre pressure monitor
- Alloy wheels
- Front parking sensor
- Rear parking sensor
- Electric door mirrors
- Rear electric windows
- Drivers airbag
- Central locking
- Heated front seat
- Telephone
- Air conditioning
- Rear headrests
- Passenger airbag
- Remote central locking

Photos





Condition Check



Damage Photos



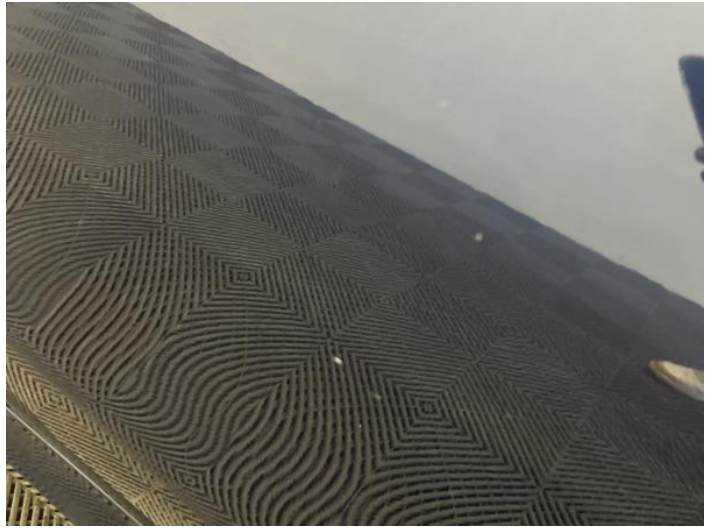
1: Wheel osf
Scratched
Over 50mm



2: Wing osf
Scratched
Over 25mm Thru Paint



3: Door osf
Chipped
1 To 5



4: Door osr
Chipped
1 To 5



5: Wheel osr
Corroded
Light



6: Qtr Panel osr
Chipped
1 To 5



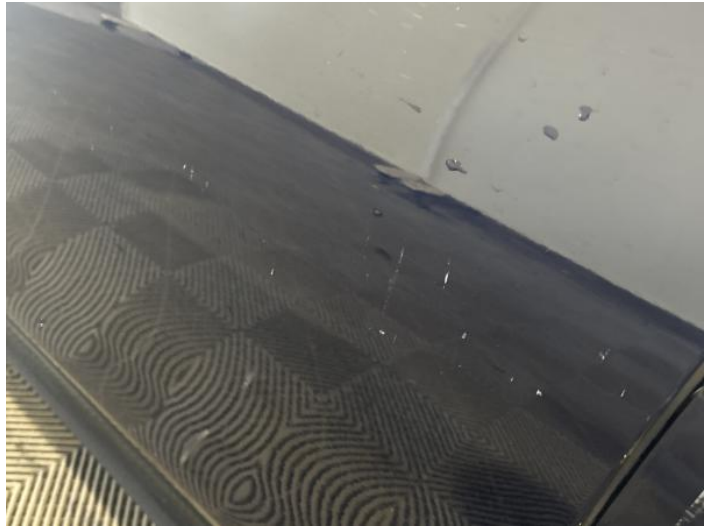
7: Qtr Panel nsr
Dented
2 Or Less UpTo 10mm



8: Wheel nsr
Corroded
Light



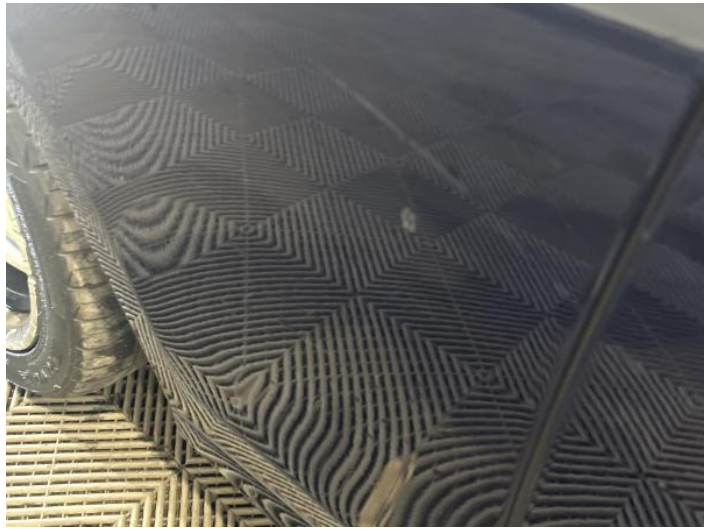
9: Door nsr
Scratched
Over 25mm Thru Paint



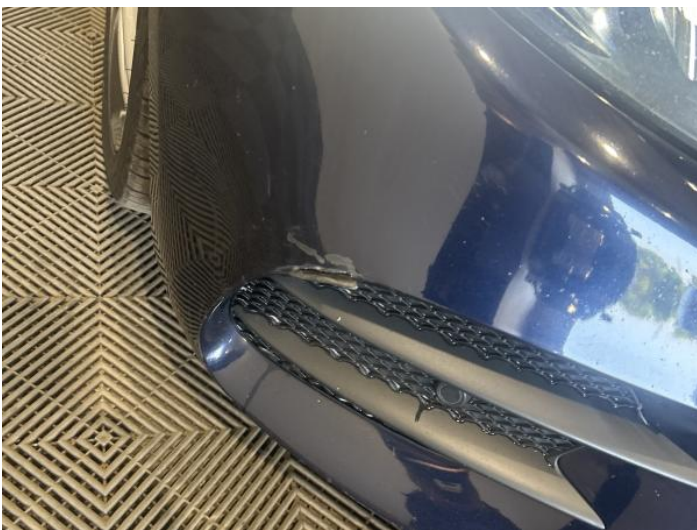
10: Door nsf
Chipped
Multiple Chips



11: Wheel nsf
Scratched
Over 50mm



12: Wing nsf
Chipped
1 To 5



13: Bumper Front
Scratched
25 to 100mm Thru Paint



14: Bonnet
Chipped
1 To 5



15: Tailgate
 Scratched
 Over 25mm Thru Paint

Interior

Carpet Condition	Average	Upholstery Condition	Average
Seat Condition	Average	Odour	No

Vehicle Inspection Report

Disclaimer

Photographs, inspection reports and other descriptions are primarily for the use of customers using our LiveBid facility who are not able to attend the sale in person. Those who bid in person must satisfy themselves as to the condition of the vehicle before they bid; we cannot address post-sale issues which rely solely on our reports, descriptions and/or photographs.

Additional fees may apply to some vendors.

Please note buyers rate increase from 01/01/2025

Engine Runs	Fault	Gearbox 1st and Reverse Test	OK
Brakes	OK	Clutch Slip Test from Static	OK
Turbo Boosting	OK	Gearbox Static Gear Selection (engine running)	OK
Parking Brake	OK	No Excessive Smoking	OK
EML light illuminated	OK	Oil warning light illuminated	OK
Airbag light illuminated	OK	DPF light illuminated	OK
ABS light illuminated	OK	Service indicator light illuminated	Fault
Windows	OK	Radio	OK
Sat nav	OK	Steering	OK