



# VEHICLE INSPECTION REPORT

**AJ09UEB**

## Peugeot 107 1.0 Verve 5dr

Inspection		Vehicle	
Serious Damage?	No	VAT	Margin
		V5	TBC

nama  
GRADE  
4

### Details

Reg. date	15/06/2009	VIN	VF3PNCFAC88361938	CAP Below	£250.00
Year	2009	Body Style	Hatchback	Gearbox	MANUAL
Mileage	77,618 Miles Not Warranted	Keys	2	Doors	5
Fuel Type	Petrol	CAP Clean	£1,050.00		
Colour	Orange	CAP Average	£660.00		

Engine rattling and possible exhaust leak  
Clutch issue

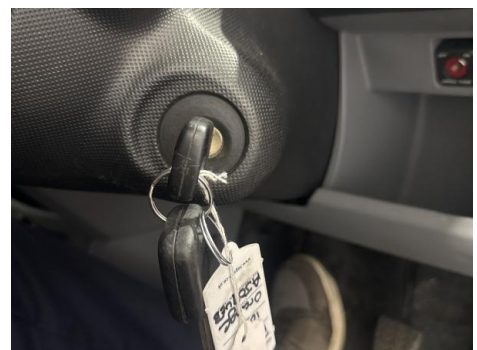
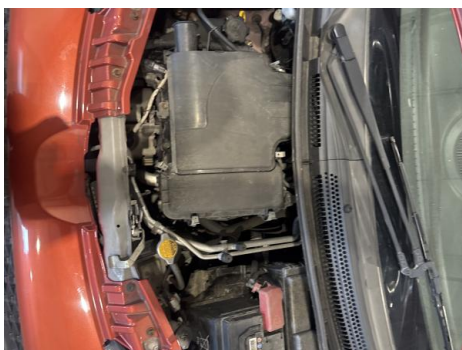
### Tyres

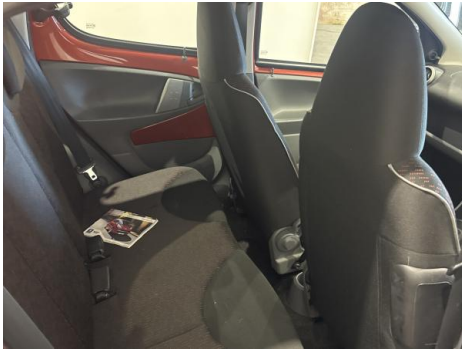
NSF	AUTOGREEN	4.0mm
NSR	PIRELLI	5.0mm
OSF	AUTOGREEN	5.0mm
OSR	HANKOOK	4.0mm
Spare		

## Features

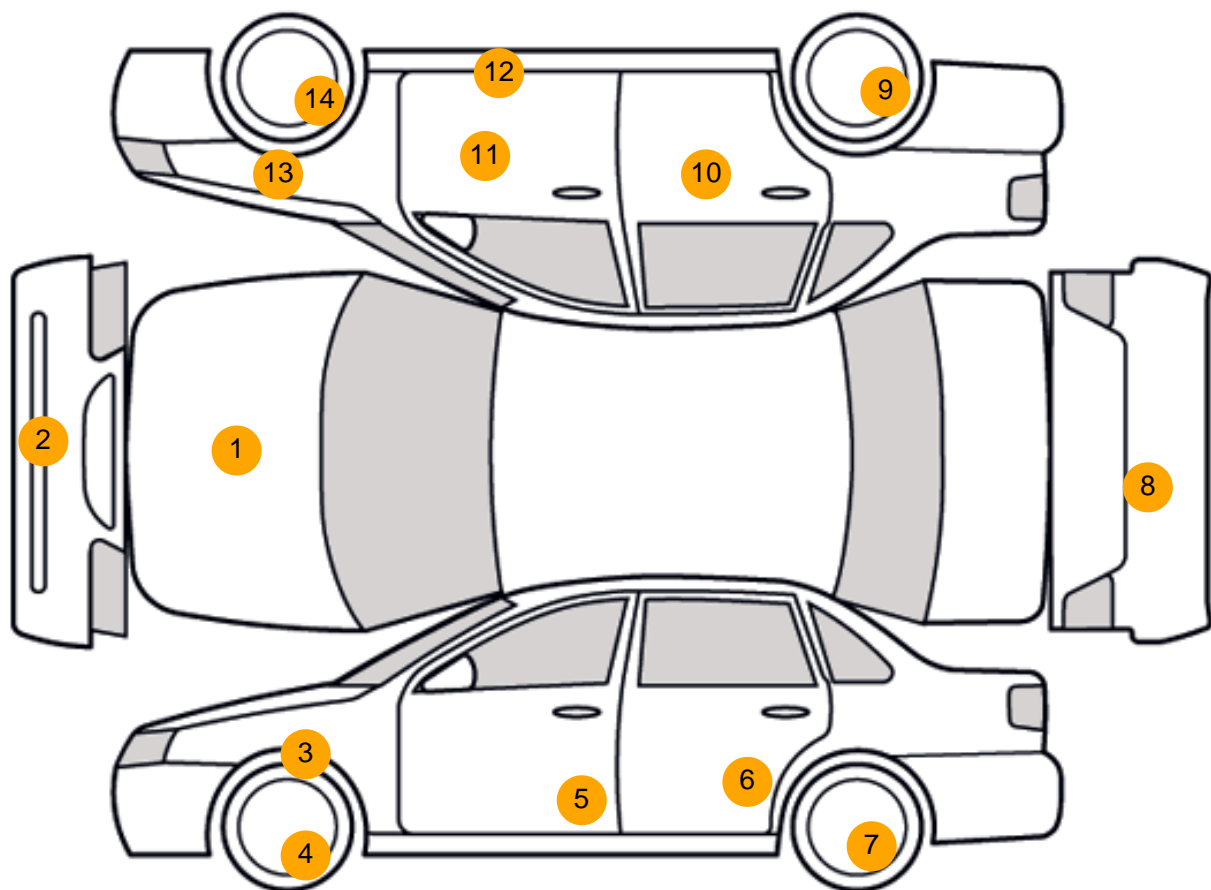
- PAS
- Air conditioning
- Rear headrests
- Drivers airbag
- Cloth seat trim
- Rear wiper
- Climate control
- Steering wheel rake adjustment
- Passenger airbag
- Alloy wheels
- Radio/CD
- Front electric windows
- Metallic Paint
- Central locking
- Body coloured bumpers
- Front head restraints
- ABS
- Remote central locking

## Photos





## Condition Check



## Damage Photos



1: Bonnet  
Chipped  
1 To 5



2: Bumper Front  
Scratched  
25 to 100mm Thru Paint





3: Wing nsf  
Chipped  
1 To 5



4: Wheel nsf  
Scratched  
Over 50mm



5: Door nsf  
Dented  
Over 30mm



6: Door nsr  
Dented  
Over 30mm



7: Wheel nsr  
Scratched  
Over 50mm



8: Bumper Rear  
Scratched  
Over 100mm Thru Paint



9: Wheel osr  
Scratched  
Over 50mm



10: Door osr  
Chipped  
1 To 5



11: Door osf  
Scratched  
Over 25mm Thru Paint



12: Sill os  
Dented  
With Paint Damage



13: Wing osf  
Scratched  
Over 25mm Thru Paint



14: Wheel osf  
Scratched  
Over 50mm

## Interior

**Carpet Condition**  
**Seat Condition**

Average  
Average

**Upholstery Condition**  
**Odour**

Average  
No