



# VEHICLE INSPECTION REPORT

**LM70XRB**

## Audi A5 40 TDI S Line 5dr S Tronic

nama  
 GRADE  
**3**

Inspection		Vehicle	
Serious Damage?	No	VAT	Margin
		V5	Present

### Details

Reg. date	27/10/2020	Body Style	Hatchback	Last service miles	47,271
Year	2020	Keys	2	MOT Due	10/07/2026
Mileage	49,837 Miles Warranted	Service history	Yes	Gearbox	SEMI AUTO
Fuel Type	Diesel	Service documents	Printout	Gears	7
Colour	BLACK	Number of stamps	1	Doors	5
VIN	WAUZZZF53KA085740	Last service date	13/06/2025		

### £65 ADDITIONAL FEE

Last Service - 13.06.2025 at 47271 miles (1 main dealer services)  
 Car has been plugged in and detects cylinder 3 glow plug circuit

### Tyres

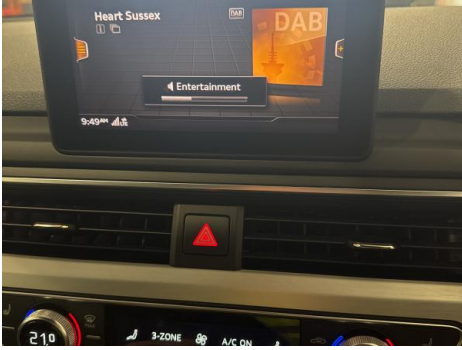
NSF	KUMHO	5.0mm
NSR	KUMHO	5.0mm
OSF	KUMHO	5.0mm
OSR	KUMHO	5.0mm
Spare		

## Features

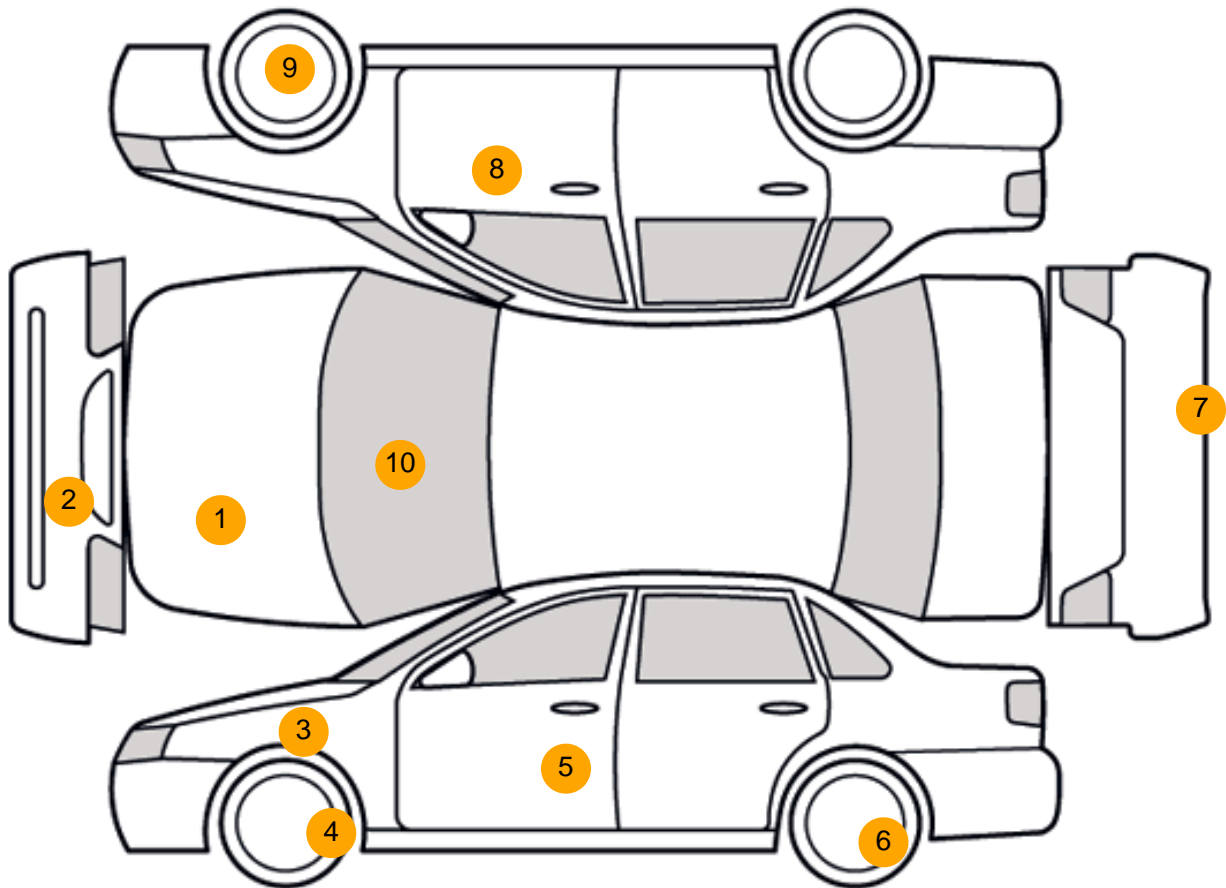
- Bluetooth connection
- Navigation system
- Digital radio
- Towbar
- Front electric windows
- Rear headrests
- 3x3 point rear seat belts
- Isofix child seat anchor points
- Remote central locking
- Cruise control
- PAS
- Body coloured bumpers
- Air conditioning
- Front head restraints
- Steering wheel rake adjustment
- ABS
- Passenger airbag
- Partial leather seat trim
- Front parking sensor
- Rear parking sensor
- Electric door mirrors
- Folding rear seats
- Height adjustable drivers seat
- Steering wheel reach adjustment
- Drivers airbag
- Side airbags
- Alloy wheels
- Heated front seat
- Steering wheel mounted controls
- Front fog lights
- Front armrest
- Rear electric windows
- Metallic Paint
- ESP
- Central locking

## Photos





## Condition Check



## Damage Photos



1: Bonnet  
Chipped  
Multiple Chips



2: Bumper Front  
Chipped  
Multiple Chips





3: Wing nsf  
Chipped  
1 To 5



4: Wheel nsf  
Scratched  
Over 50mm



5: Door nsf  
Dented  
Between 10mm + 30mm



6: Wheel nsr  
Scratched  
Up To 50mm



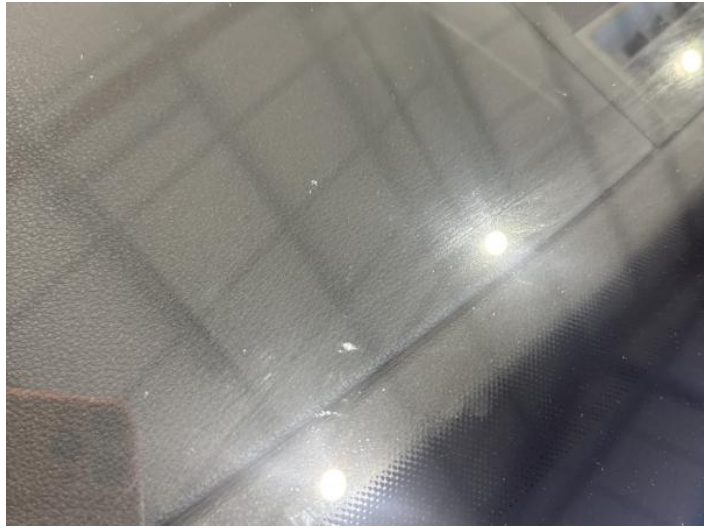
7: Bumper Rear  
Scratched  
25 to 100mm Thru Paint



8: Door osf  
Dented  
Over 30mm



9: Wheel of  
Scratched  
Over 50mm



10: Screen Front  
Chipped  
UpTo 10mm

### Interior

**Carpet Condition** Average  
**Seat Condition** Average

**Upholstery Condition** Average  
**Odour** No

## Vehicle Inspection Report

### Disclaimer

Photographs, inspection reports and other descriptions are primarily for the use of customers using our LiveBid facility who are not able to attend the sale in person. Those who bid in person must satisfy themselves as to the condition of the vehicle before they bid; we cannot address post-sale issues which rely solely on our reports, descriptions and/or photographs.

Additional fees may apply to some vendors.

Please note buyers rate increase from 01/01/2025

Engine Runs	OK	Gearbox 1st and Reverse Test	OK
Brakes	OK	Clutch Slip Test from Static	OK
Turbo Boosting	OK	Gearbox Static Gear Selection (engine running)	OK
Parking Brake	OK	No Excessive Smoking	OK
EML light illuminated	Fault	Oil warning light illuminated	OK
Airbag light illuminated	OK	DPF light illuminated	OK
ABS light illuminated	OK	Service indicator light illuminated	OK
Windows	OK	Radio	OK
Sat nav	OK	Steering	OK