



# VEHICLE INSPECTION REPORT

**HT68FEK**

## Kia Stonic 1.0T GDi 4 5dr Auto

Inspection		Vehicle	
Serious Damage?	No	VAT	Margin
		V5	Present



### Details

Reg. date	03/01/2019	Body Style	Hatchback	Last service miles	87,815
Year	2019	Keys	2	MOT Due	Expired
Mileage	88,276 Miles Warranted	Service history	Yes	Gearbox	SEMI AUTO
Fuel Type	Petrol	Service documents	Service Book	Gears	7
Colour	GREY	Number of stamps	8	Doors	5
VIN	KNAD6811VK6241101	Last service date	25/11/2025		

£100 ADDITIONAL FEE. EXPIRED MOT.

Last service 25/11/2025 at 87,815 miles- 8 services (3 main dealer) Book

### Tyres

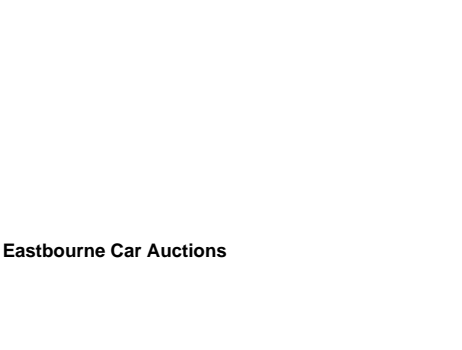
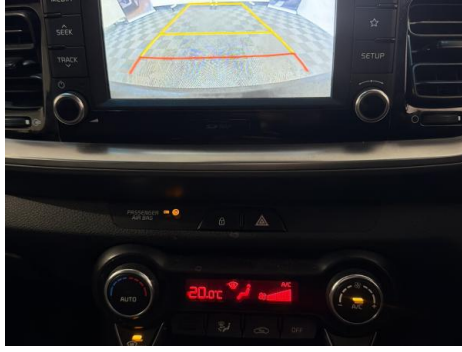
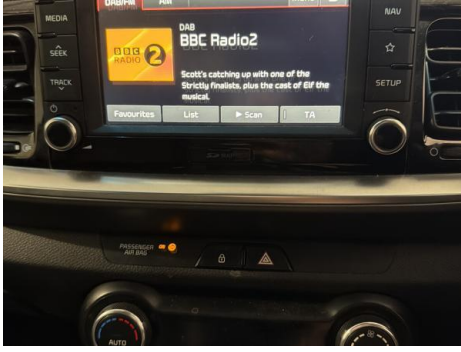
NSF	CONTINENTAL	3.0mm
NSR	CONTINENTAL	4.0mm
OSF	CONTINENTAL	3.0mm
OSR	CONTINENTAL	3.0mm
Spare		

## Features

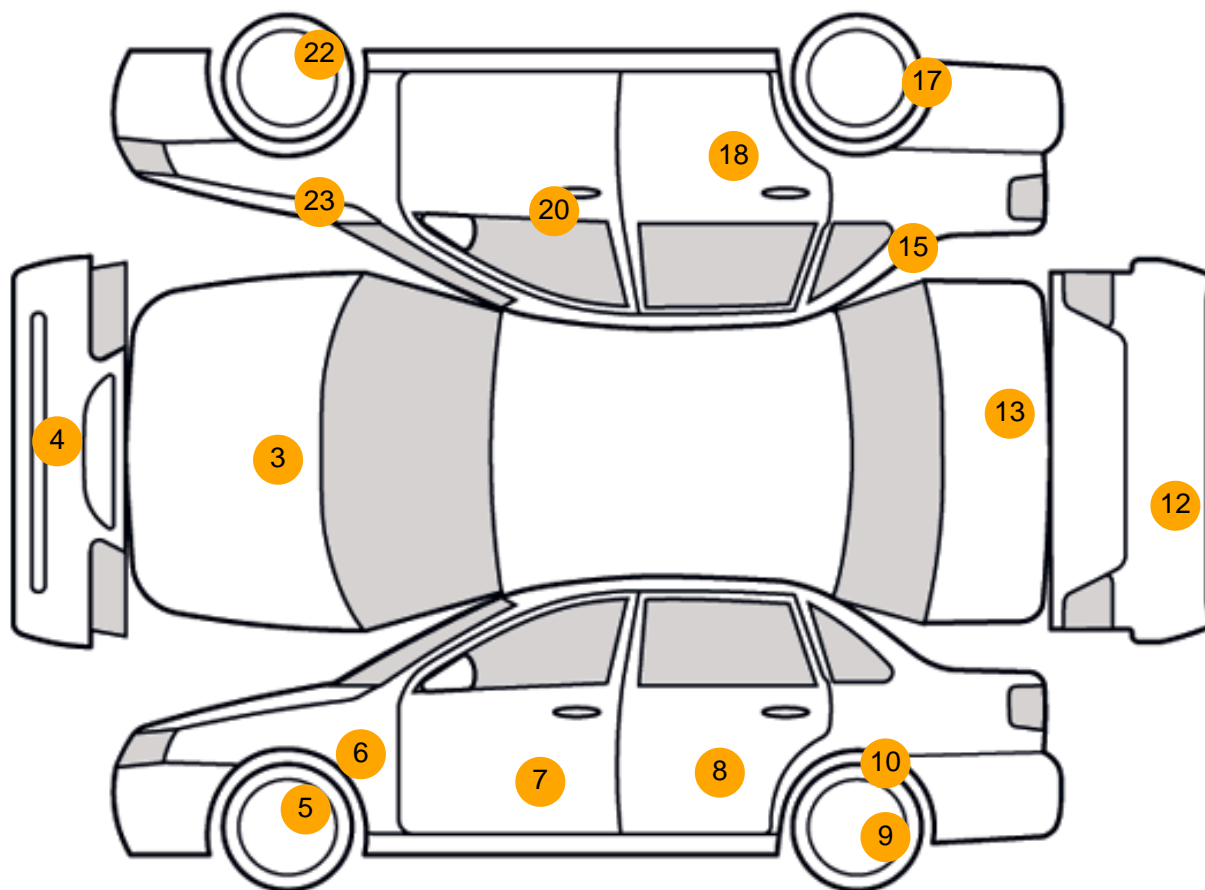
- Bluetooth connection
- Park assist camera
- Steering wheel mounted controls
- Electric door mirrors
- Front electric windows
- Rear headrests
- Drivers airbag
- Central locking
- Cruise control
- PAS
- Audio remote control
- Air conditioning
- Front head restraints
- Metallic Paint
- Isofix child seat anchor points
- Remote central locking
- Heated front seat
- Rear parking sensor
- Digital radio
- Climate control
- Height adjustable drivers seat
- 3x3 point rear seat belts
- Passenger airbag
- Leather seat trim
- Navigation system
- Rear wiper
- Body coloured bumpers
- Front armrest
- Rear electric windows
- ABS
- Traction control
- Alloy wheels

## Photos

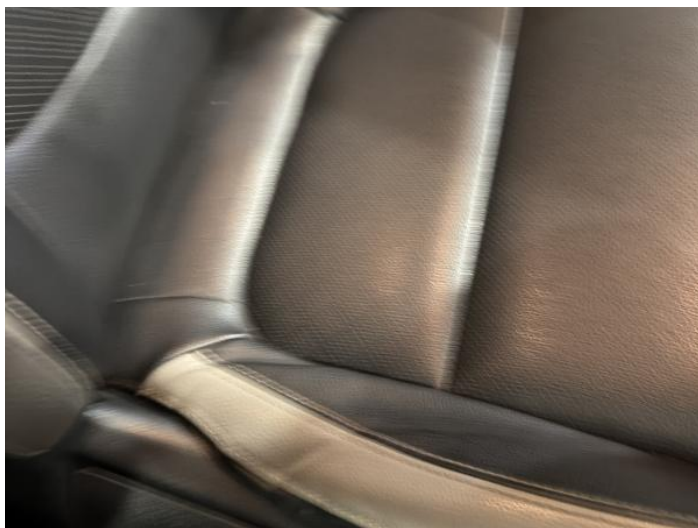




## Condition Check



## Damage Photos



1: Seat Base Cover osf  
Torn  
Over 3mm



2: Door Pad osf  
Scuffed  
Over 25mm





3: Bonnet  
Chipped  
Multiple Chips



4: Bumper Front  
Scratched  
Over 100mm Thru Paint



5: Wheel nsf  
Scratched  
Over 50mm



6: Wing nsf  
Scratched  
Over 25mm Thru Paint



7: Door nsf  
Chipped  
Multiple Chips



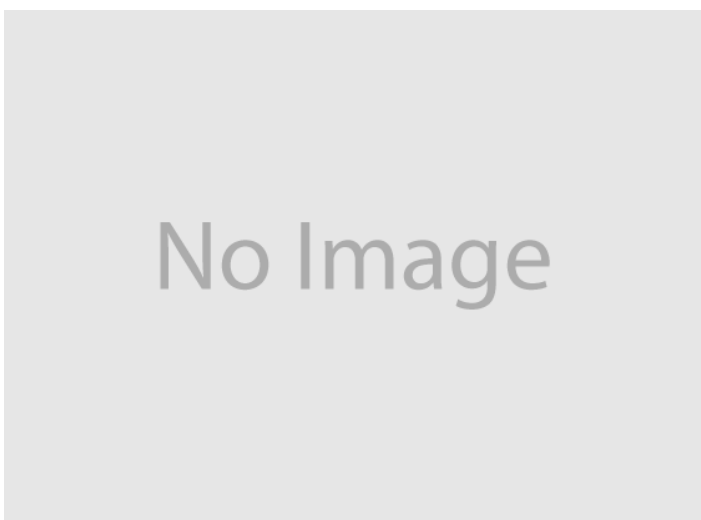
8: Door nsr  
Dented  
With Paint Damage



9: Wheel nsr  
Scratched  
Over 50mm



10: Qtr Panel nsr  
Chipped  
1 To 5



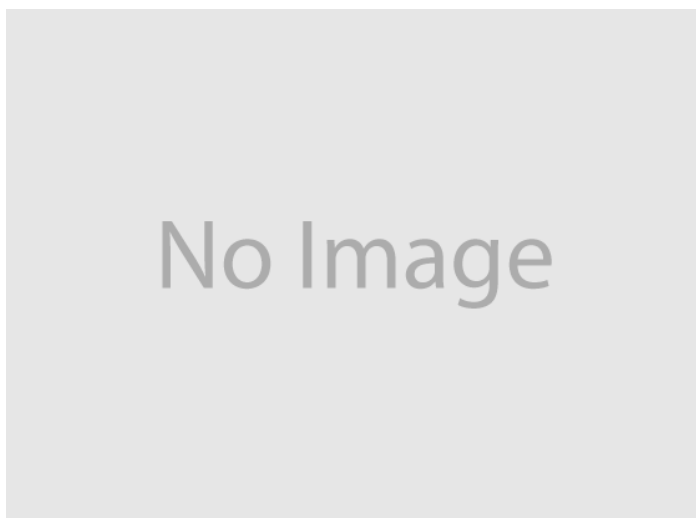
11: Qtr Panel nsr  
Scratched  
Over 25mm Not Thru Paint



12: Bumper Rear  
Scratched  
25 to 100mm Thru Paint



13: Boot Lid  
Dented  
Over 30mm



14: Bumper Rear  
Scratched  
Over 25mm Not Thru Paint





15: Qtr Panel osr  
Dented  
Between 10mm + 30mm



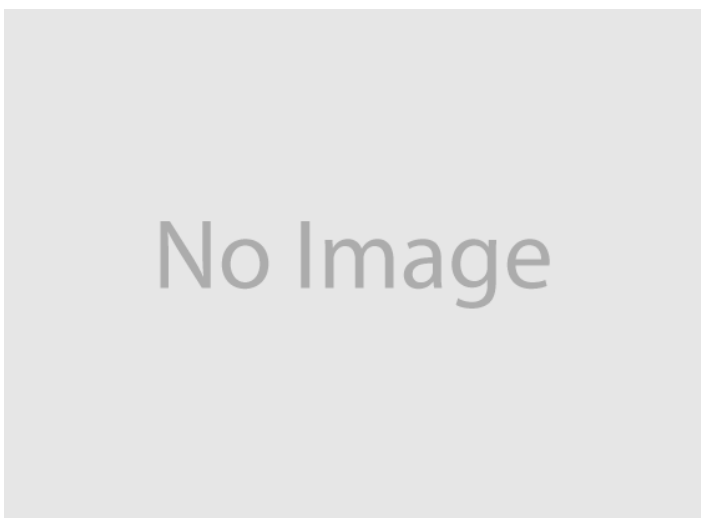
16: Qtr Panel osr  
Scratched  
Over 25mm Not Thru Paint



17: Wheel osr  
Scratched  
Over 50mm



18: Door osr  
Dented  
Over 2 UpTo 10mm



19: Door osr  
Scratched  
Over 25mm Not Thru Paint



20: Door osf  
Chipped  
1 To 5

No Image



21: Door osf  
Scratched  
Over 25mm Not Thru Paint

22: Wheel osf  
Scratched  
Over 50mm



23: Wing osf  
Scratched  
Over 25mm Thru Paint

## Interior

**Carpet Condition**  
**Seat Condition**

Average  
Average

**Upholstery Condition**  
**Odour**

Average  
No

## Vehicle Inspection Report

### Disclaimer

Photographs, inspection reports and other descriptions are primarily for the use of customers using our LiveBid facility who are not able to attend the sale in person. Those who bid in person must satisfy themselves as to the condition of the vehicle before they bid; we cannot address post-sale issues which rely solely on our reports, descriptions and/or photographs.

Additional fees may apply to some vendors.

Please note buyers rate increase from 01/01/2025

Engine Runs	OK	Gearbox 1st and Reverse Test	OK
Brakes	OK	Clutch Slip Test from Static	OK
Turbo Boosting	OK	Gearbox Static Gear Selection (engine running)	OK
Parking Brake	OK	No Excessive Smoking	OK

EML light illuminated	OK	Oil warning light illuminated	OK
Airbag light illuminated	OK	Service indicator light illuminated	OK
ABS light illuminated	OK		
Windows	OK	Radio	OK
Sat nav	OK	Steering	OK