



# VEHICLE INSPECTION REPORT

**HK14HHX**

## Nissan Juke 1.6 Acenta Premium 5dr Xtronic

Inspection		Vehicle	
Serious Damage?	No	VAT	Margin
		V5	Present



### Details

Reg. date	30/06/2014	Body Style	Hatchback	Last service miles	43,306
Year	2014	Keys	2	MOT Due	25/06/2026
Mileage	43,803 Miles Warranted	Service history	Yes	Gearbox	CVT
Fuel Type	Petrol	Service documents	Service Book	Gears	5
Colour	BLACK	Number of stamps	11	Doors	5
VIN	SJNFBAF15U7007590	Last service date	16/06/2025		

£65 ADDITIONAL FEE

Last Service - 16.06.2025 at 43306 miles (11 services)

Gearbox fault

### Tyres

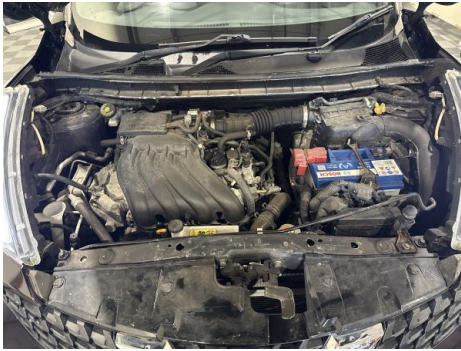
NSF	BRIDGESTONE	5.0mm
NSR	BRIDGESTONE	5.0mm
OSF	BRIDGESTONE	5.0mm
OSR	BRIDGESTONE	5.0mm
Spare		

## Features

- Bluetooth connection
- PAS
- Body coloured bumpers
- Folding rear seats
- Rear electric windows
- Metallic Paint
- Isofix child seat anchor points
- Remote central locking
- Cruise control
- Rear wiper
- Electric door mirrors
- Front electric windows
- Rear headrests
- 3x3 point rear seat belts
- Passenger airbag
- Cloth seat trim
- Navigation system
- Steering wheel mounted controls
- Front fog lights
- Front head restraints
- Steering wheel rake adjustment
- ABS
- Side airbags
- Alloy wheels
- Park assist camera
- Digital radio
- Air conditioning
- Height adjustable drivers seat
- Steering wheel reach adjustment
- Drivers airbag
- Central locking

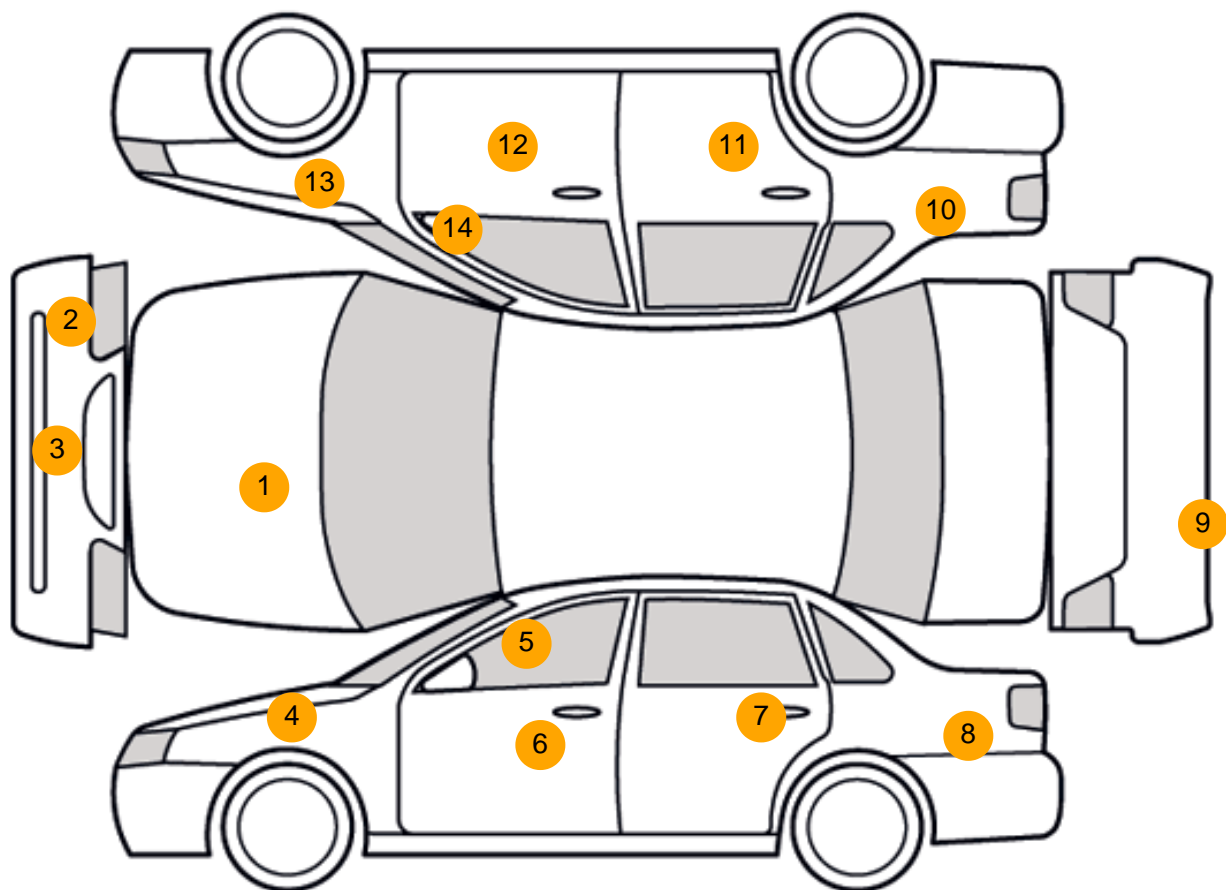
## Photos







## Condition Check



## Damage Photos



1: Bonnet  
Chipped  
1 To 5



2: Bumper Front  
Scratched  
25 to 100mm Thru Paint



3: Bumper Front Moulding  
Scuffed (Unpainted)  
Over 100mm



4: Wing osf  
Scratched  
Over 25mm Thru Paint



5: A Post ns  
Dented  
With Paint Damage



6: Door nsf  
Scratched  
Over 25mm Thru Paint



7: Door nsr  
Scratched  
Over 25mm Thru Paint



8: Qtr Panel nsr  
Scratched  
Over 25mm Thru Paint





9: Bumper Rear  
Chipped  
1 To 5



10: Qtr Panel osr  
Scratched  
UpTo 25mm Thru Paint



11: Door osr  
Chipped  
1 To 5



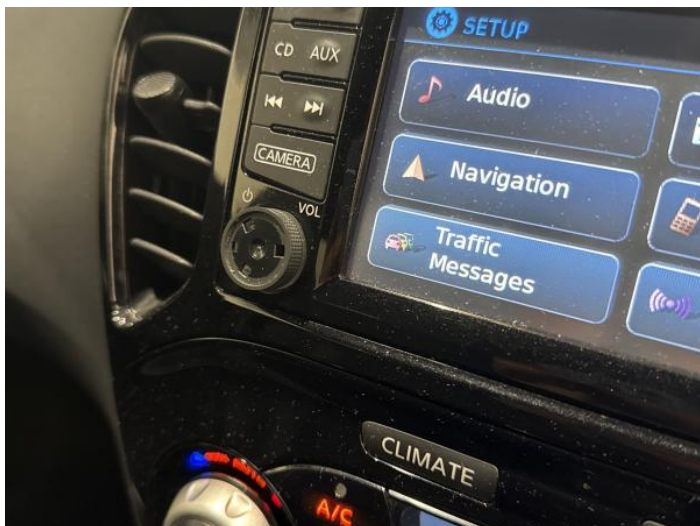
12: Door osf  
Chipped  
Edge Chip



13: Wing osf  
Chipped  
1 To 5



14: Door Mirror Assy osf  
Scratched (Painted)  
UpTo 25mm Thru Paint



#### 15: Switches And Controls

Broken

Replace

#### Interior

**Carpet Condition**

Average

**Seat Condition**

Average

**Upholstery Condition**

Average

**Odour**

No

### Vehicle Inspection Report

#### Disclaimer

Photographs, inspection reports and other descriptions are primarily for the use of customers using our LiveBid facility who are not able to attend the sale in person. Those who bid in person must satisfy themselves as to the condition of the vehicle before they bid; we cannot address post-sale issues which rely solely on our reports, descriptions and/or photographs.

Additional fees may apply to some vendors.

Please note buyers rate increase from 01/01/2025

Engine Runs	OK	Gearbox 1st and Reverse Test	Fault
Brakes	OK	Clutch Slip Test from Static	Fault
Parking Brake	OK	Gearbox Static Gear Selection (engine running)	Fault
		No Excessive Smoking	OK
EML light illuminated	OK	Oil warning light illuminated	OK
Airbag light illuminated	OK	Service indicator light illuminated	OK
ABS light illuminated	OK		
Windows	OK	Radio	OK
Sat nav	OK	Steering	OK