



# VEHICLE INSPECTION REPORT

**RF71MYA**

## Hyundai Kona 150kW Premium 64kWh 5dr Auto

Inspection		Vehicle	
Serious Damage?	No	VAT	Margin
		V5	Present



### Details

Reg. date	17/02/2022	Body Style	Hatchback	Last service miles	4
Year	2022	Keys	2	MOT Due	16/02/2026
Mileage	52,987 Miles Warranted	Service history	Yes	Gearbox	AUTOMATIC
Fuel Type	Electric	Service documents	Service Book	Gears	1
Colour	RED	Number of stamps	4	Doors	5
VIN	KMHK381GUNU147614	Last service date	07/02/2025		

£100 ADDITIONAL FEE. Last service 07/02/2025 at 42078 miles (4 main dealer services). Type 2 charging cable in boot

### Tyres

NSF	BUDGET	4.0mm
NSR	RAPID	4.0mm
OSF	BUDGET	4.0mm
OSR	RAPID	4.0mm
Spare		

## Features

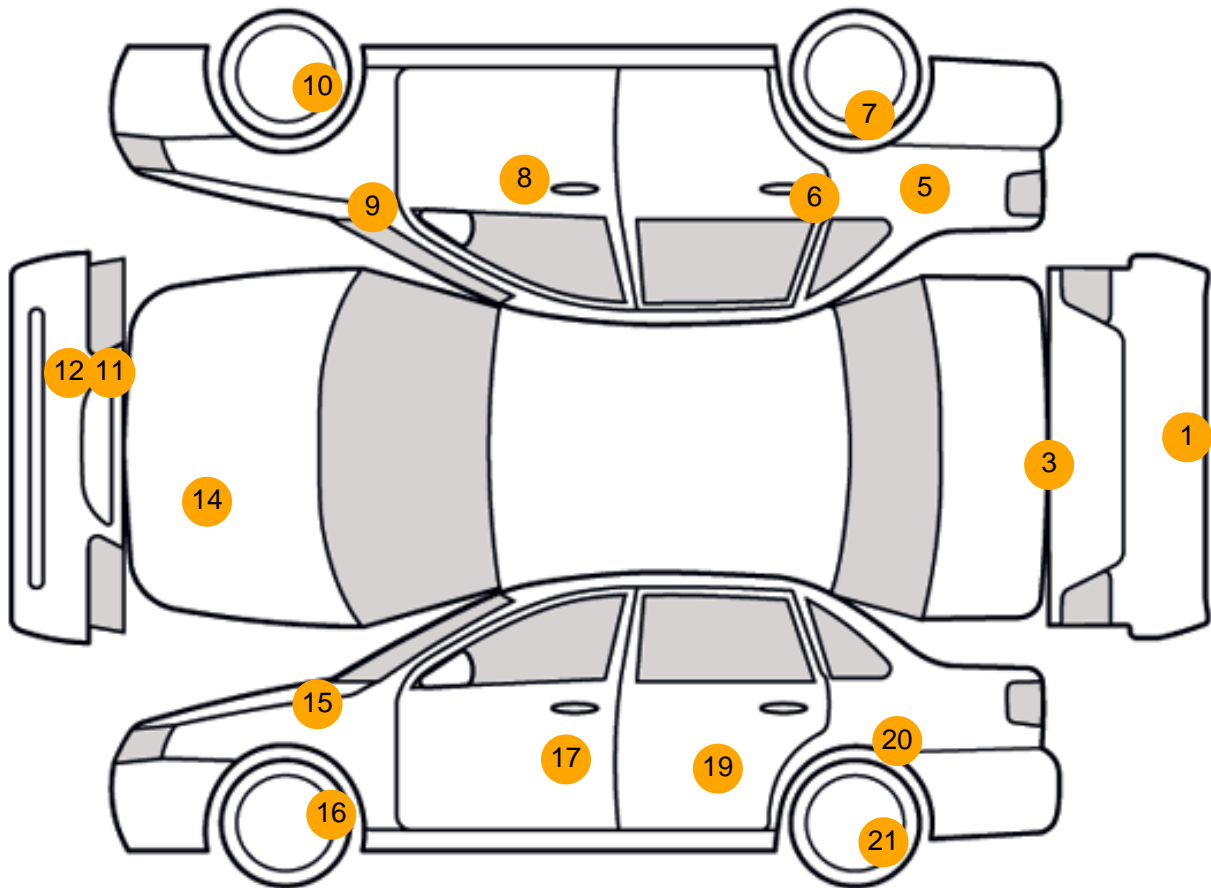
- Bluetooth connection
- Park assist camera
- Steering wheel mounted controls
- Electric door mirrors
- Front electric windows
- Rear headrests
- Drivers airbag
- Traction control
- Alloy wheels
- Cruise control
- PAS
- Audio remote control
- Air conditioning
- Front head restraints
- Metallic Paint
- Isofix child seat anchor points
- Central locking
- Front parking sensor
- Rear parking sensor
- Digital radio
- Climate control
- Height adjustable drivers seat
- 3x3 point rear seat belts
- Passenger airbag
- Remote central locking
- Navigation system
- Rear wiper
- Body coloured bumpers
- Front armrest
- Rear electric windows
- ABS
- Rear airbags
- Cloth seat trim

## Photos





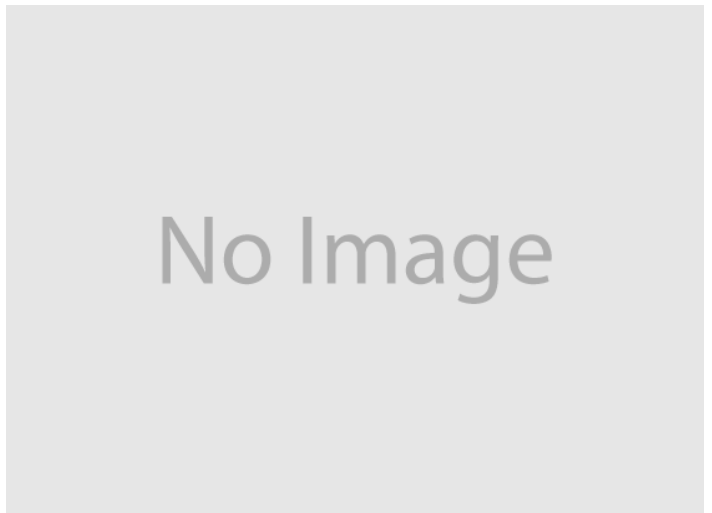
## Condition Check



## Damage Photos



1: Bumper Rear  
Scratched  
25 to 100mm Thru Paint



2: Bumper Rear  
Scratched  
Over 25mm Not Thru Paint





3: Boot Lid  
Chipped  
1 To 5



4: Boot Lid  
Scratched  
Over 25mm Not Thru Paint



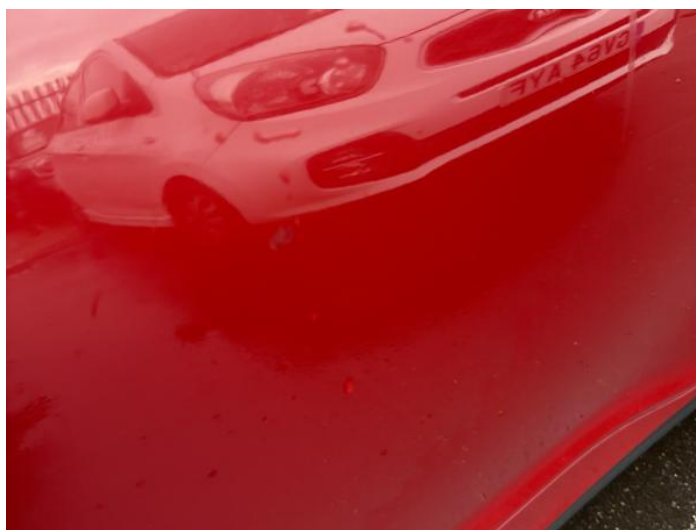
5: Qtr Panel osr  
Poor Previous Repair  
Poor Paint



6: Door osr  
Poor Previous Repair  
Poor Paint



7: Wheel osr  
Scratched  
Over 50mm



8: Door osf  
Poor Previous Repair  
Poor Paint



9: Wing osf  
Chipped  
1 To 5



10: Wheel osf  
Scratched  
Over 50mm



11: Bumper Front  
Scratched  
UpTo 25mm Thru Paint



12: Bumper Front  
Scratched  
UpTo 25mm Thru Paint



13: Bumper Front  
Scratched  
Over 25mm Not Thru Paint



14: Bonnet  
Chipped  
1 To 5





15: Wing nsf  
Dented  
Over 2 Up To 10mm



16: Wheel nsf  
Scratched  
Up To 50mm



17: Door nsf  
Chipped  
1 To 5



18: Door nsf  
Scratched  
Over 25mm Not Thru Paint



19: Door nsr  
Poor Previous Repair  
Poor Paint



20: Qtr Panel nsr  
Chipped  
1 To 5



21: Wheel nsr  
Scratched  
Up To 50mm

## Interior

<b>Carpet Condition</b>	Average	<b>Upholstery Condition</b>	Average
<b>Seat Condition</b>	Average	<b>Odour</b>	No

## Vehicle Inspection Report

### Disclaimer

Photographs, inspection reports and other descriptions are primarily for the use of customers using our LiveBid facility who are not able to attend the sale in person. Those who bid in person must satisfy themselves as to the condition of the vehicle before they bid; we cannot address post-sale issues which rely solely on our reports, descriptions and/or photographs.

Additional fees may apply to some vendors.

Please note buyers rate increase from 01/01/2025

Engine Runs	OK	Gearbox 1st and Reverse Test	OK
Brakes	OK	Clutch Slip Test from Static	OK
Parking Brake	OK	Gearbox Static Gear Selection (engine running)	OK
		No Excessive Smoking	OK
EML light illuminated	OK	Oil warning light illuminated	OK
Airbag light illuminated	OK	Service indicator light illuminated	OK
ABS light illuminated	OK		
Windows	OK	Radio	OK
Sat nav	OK	Steering	OK