

VEHICLE INSPECTION REPORT

GL03DMU

Chrysler Pt Cruiser CLASSIC

Inspection		Vehicle	
Serious Damage?	No	VAT	Margin
		V5	TBC



Details

Reg. date	23/05/2003	Colour	RED	MOT Due	24/04/2026
Year	2003	VIN	1C8F4N8973T619422	Gearbox	MANUAL
Mileage	48,056 Miles Warranted	Body Style	Saloon	Gears	5
Fuel Type	Petrol	Keys	1	Doors	4

Missing 2/3 headrests
Abs light on

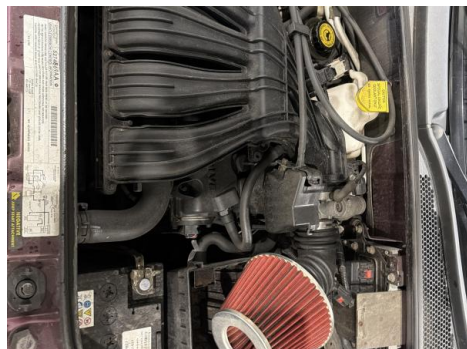
Tyres

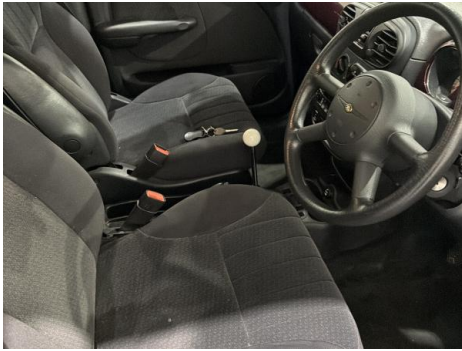
NSF	BUDGET	3.0mm
NSR	BUDGET	4.0mm
OSF	BUDGET	4.0mm
OSR	BUDGET	4.0mm
Spare		

Features

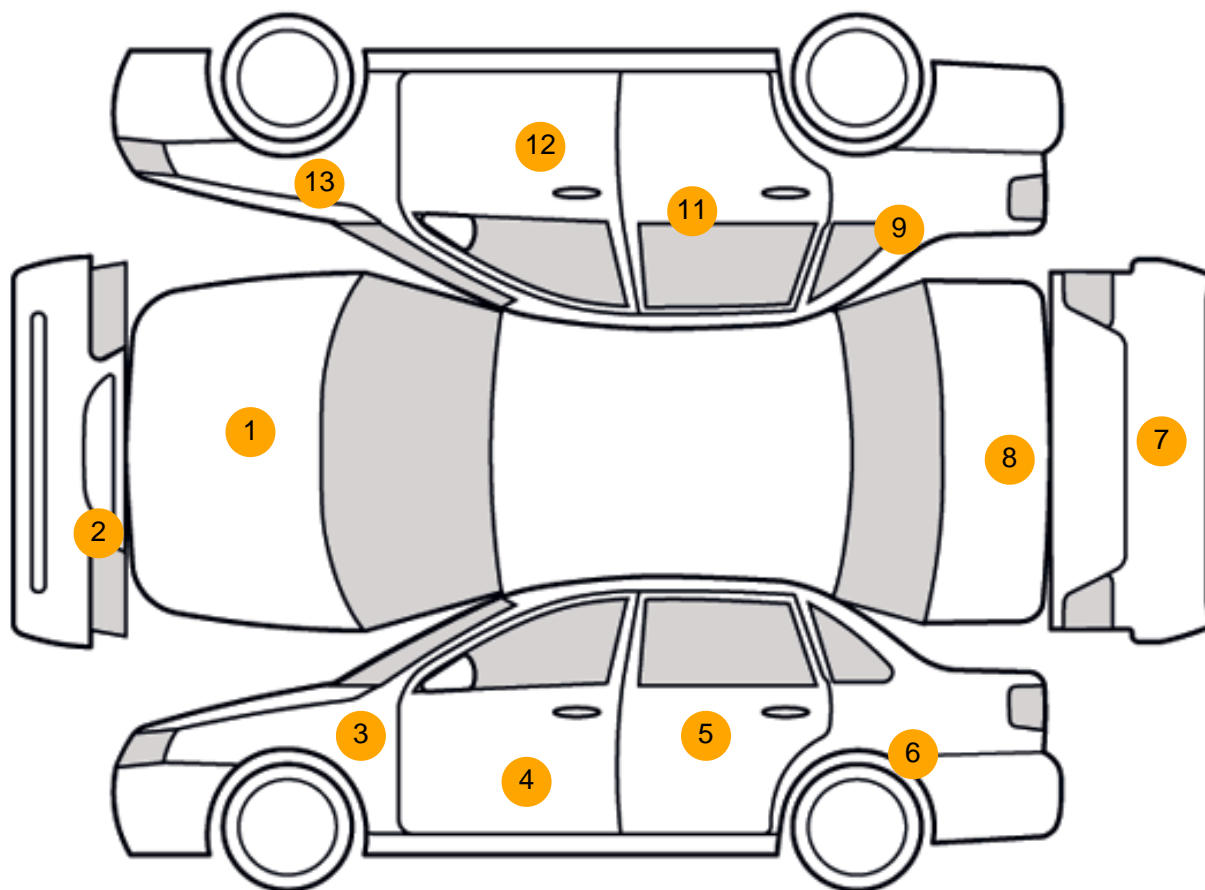
- PAS
- Electric door mirrors
- Rear electric windows
- Drivers airbag
- Cloth seat trim
- Rear wiper
- Climate control
- Rear headrests
- Passenger airbag
- Steel wheels
- Radio/CD
- Front electric windows
- Metallic Paint
- Central locking
- Body coloured bumpers
- Front head restraints
- 3x3 point rear seat belts
- Remote central locking

Photos

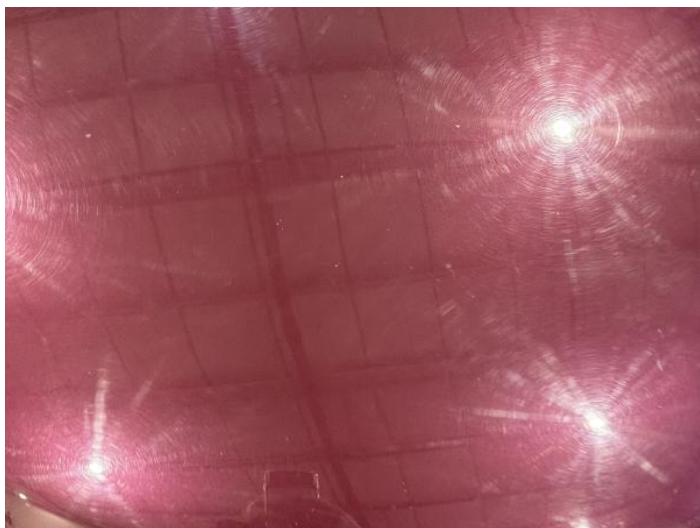




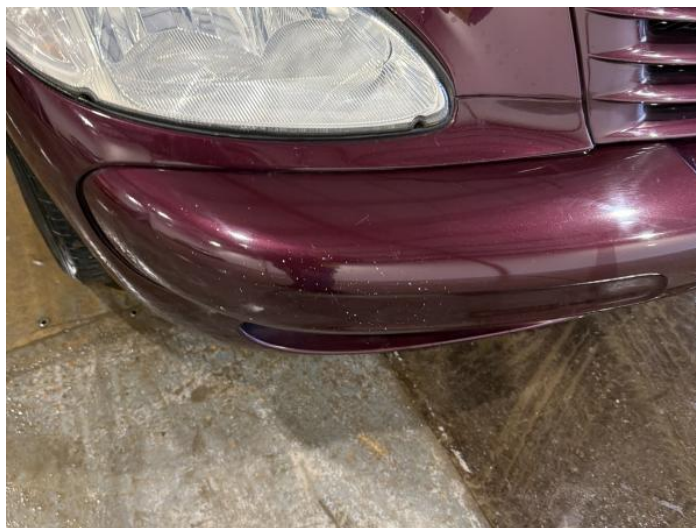
Condition Check



Damage Photos



1: Bonnet
Chipped
Multiple Chips



2: Bumper Front
Poor Previous Repair
Poor Paint



3: Wing nsf
Poor Previous Repair
Poor Paint



4: Door nsf
Poor Previous Repair
Poor Paint



5: Door nsr
Poor Previous Repair
Poor Paint



6: Qtr Panel nsr
Scratched
Over 25mm Thru Paint



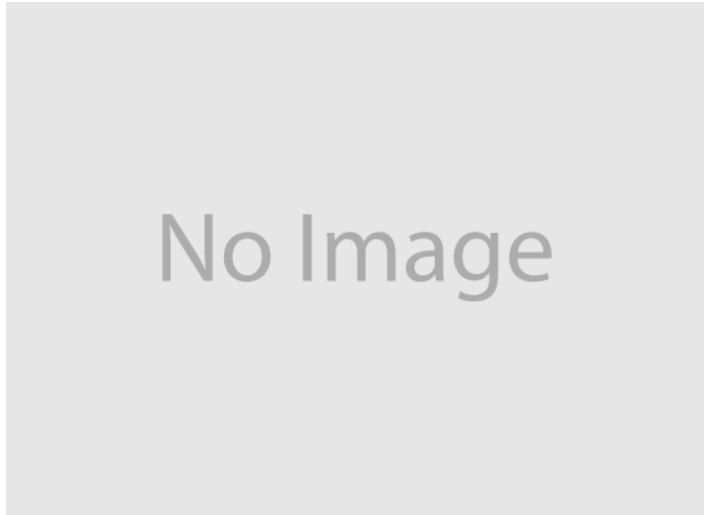
7: Bumper Rear
Poor Previous Repair
Paint Flake



8: Boot Lid
Dented
Over 30mm



9: Qtr Panel osr
Dented
2 Or Less UpTo 10mm



10: Qtr Panel osr
Scratched
Over 25mm Not Thru Paint



11: Door osr
Poor Previous Repair
Poor Paint



12: Door osf
Chipped
Multiple Chips



13: Wing osf
Chipped
Multiple Chips

Interior

Carpet Condition
Seat Condition

Average
Average

Upholstery Condition
Odour

Average
No

Vehicle Inspection Report

Disclaimer

Photographs, inspection reports and other descriptions are primarily for the use of customers using our LiveBid facility who are not able to attend the sale in person. Those who bid in person must satisfy themselves as to the condition of the vehicle before they bid; we cannot address post-sale issues which rely solely on our reports, descriptions and/or photographs.

Additional fees may apply to some vendors.

Please note buyers rate increase from 01/01/2025

Engine Runs	OK	Gearbox 1st and Reverse Test	OK
Brakes	OK	Clutch Slip Test from Static	OK
Parking Brake	OK	Gearbox Static Gear Selection (engine running)	OK
		No Excessive Smoking	OK
EML light illuminated	OK	Oil warning light illuminated	OK
Airbag light illuminated	OK	Service indicator light illuminated	OK
ABS light illuminated	Fault		
Windows	OK	Radio	OK
		Steering	OK