

VEHICLE INSPECTION REPORT

GY11AVE

Suzuki SX4 1.6 SZ-L 5dr

Inspection		Vehicle	
Serious Damage?	No	VAT	Margin
		V5	Present



Details

Reg. date	23/04/2011	VIN	TSMEYA21S00513966	Gearbox	MANUAL
Year	2011	Body Style	Hatchback	Gears	5
Mileage	115,738 Miles Warranted	Keys	1	Doors	5
Fuel Type	Petrol	Service history	None		
Colour	BLACK	MOT Due	09/10/2026		

No service history Nsr and nsf windows do not open
 Seats are heavily stained

Tyres

NSF	BUDGET	3.0mm
NSR	BUDGET	4.0mm
OSF	BUDGET	3.0mm
OSR	BUDGET	5.0mm
Spare		

Features

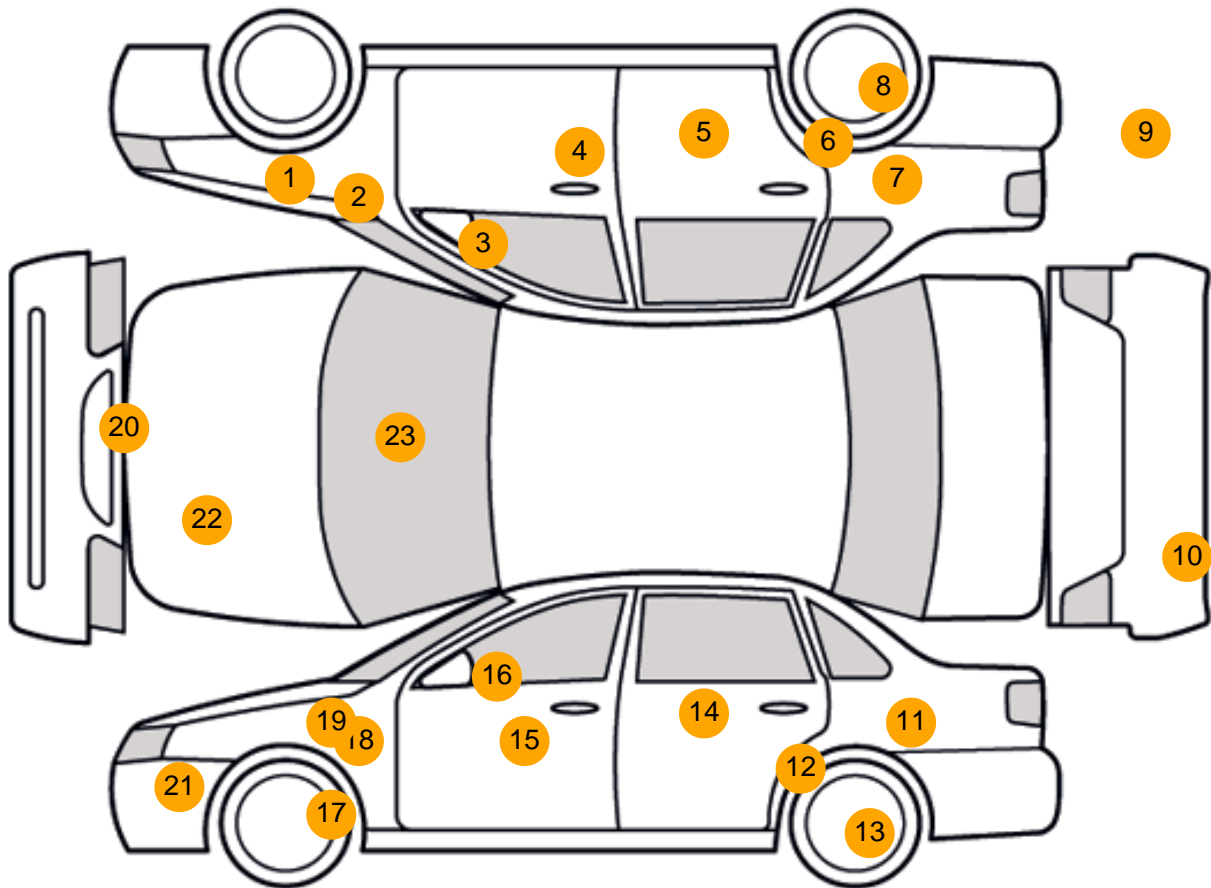
- Rear wiper
- Air conditioning
- Rear headrests
- Passenger airbag
- Alloy wheels
- Radio/CD
- Climate control
- Metallic Paint
- Central locking
- Body coloured bumpers
- Front electric windows
- ABS
- Remote central locking
- Electric door mirrors
- Rear electric windows
- Drivers airbag
- Cloth seat trim

Photos





Condition Check



Damage Photos



1: Wing osf
Chipped
1 To 5



2: Wing osf
Scratched
Over 25mm Not Thru Paint



3: Door Mirror Assy osf
Broken
Replace



4: Door osf
Scratched
Over 25mm Thru Paint



5: Door osr
Scratched
Over 25mm Thru Paint



6: Qtr Panel Moulding os
Broken
Replace



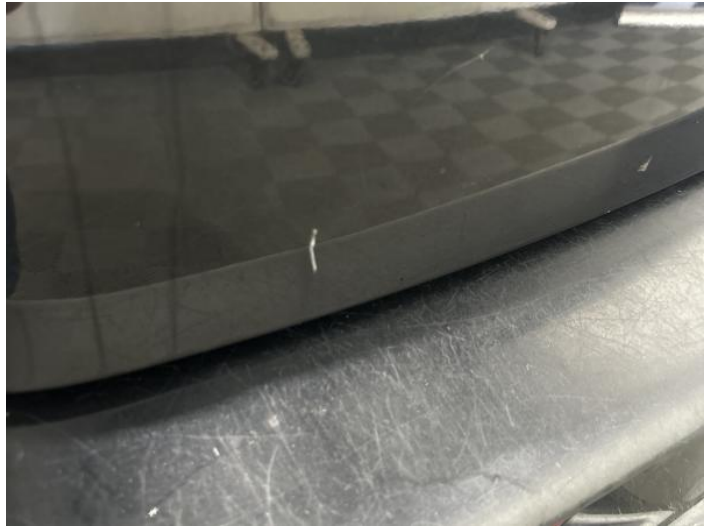
7: Qtr Panel osr
Dented
With Paint Damage



8: Wheel osr
Scratched
Over 50mm



9: Bumper Rear
Poor Previous Repair
Poor Paint



10: Tailgate
Scratched
Up To 25mm Thru Paint



11: Qtr Panel nsr
Scratched
Over 25mm Not Thru Paint



12: Door nsr
Chipped
Edge Chip



13: Wheel nsr
Scratched
Over 50mm



14: Door nsr
Scratched
Over 25mm Not Thru Paint



15: Door nsf
Scratched
Over 25mm Not Thru Paint



16: Door Mirror Assy nsf
Scratched (Painted)
Over 25mm Thru Paint



17: Wheel nsf
Scratched
Over 50mm



18: Wing nsf
Chipped
1 To 5



19: Wing nsf
Scratched
Over 25mm Not Thru Paint



20: Bumper Front
Scratched
25 to 100mm Thru Paint



21: Bumper Front
 Scratched
 Over 25mm Not Thru Paint



22: Bonnet
 Chipped
 1 To 5



23: Screen Front
 Cracked
 Replace



24: Carpets Front
 Holed
 Over 3mm

Interior

Carpet Condition Poor
Seat Condition Poor

Upholstery Condition Poor
Odour Yes

Vehicle Inspection Report

Disclaimer

Photographs, inspection reports and other descriptions are primarily for the use of customers using our LiveBid facility who are not able to attend the sale in person. Those who bid in person must satisfy themselves as to the condition of the vehicle before they bid; we cannot address post-sale issues which rely solely on our reports, descriptions and/or photographs.

Additional fees may apply to some vendors.

Please note buyers rate increase from 01/01/2025

Engine Runs	OK	Gearbox 1st and Reverse Test	OK
Brakes	OK	Clutch Slip Test from Static	OK
Parking Brake	OK	Gearbox Static Gear Selection (engine running)	OK
		No Excessive Smoking	OK

EML light illuminated	OK	Oil warning light illuminated	OK
Airbag light illuminated	OK	Service indicator light illuminated	OK
ABS light illuminated	OK		
Windows	Fault	Radio	OK
		Steering	OK