



# VEHICLE INSPECTION REPORT

**RE16UJW**

## Vauxhall Corsa 1.4 [75] ecoFLEX Energy 3dr [AC]

nama  
GRADE  
**4**

Inspection		Vehicle	
Serious Damage?	No	VAT	Margin
		V5	Present

### Details

Reg. date	30/04/2016	Body Style	Hatchback	Last service miles	98,793
Year	2016	Keys	2	MOT Due	31/05/2026
Mileage	106,780 Miles Warranted	Service history	Yes	Gearbox	MANUAL
Fuel Type	Petrol	Service documents	Service Book	Gears	5
Colour	RED	Number of stamps	9	Doors	3
VIN	W0L0XEP08G6081807	Last service date	22/05/2025		

LAST SERVICE 22/05/2025 @ 98,793 MILES (9 SERVICES, 6 MAIN DEALER) Eml light is on  
 Car been plugged in and detected indicates the engine is running too lean (too much air, not enough fuel)  
 Some panel require machine polish

### Tyres

NSF	RAPID	6.0mm
NSR	RAPID	6.0mm
OSF	RAPID	6.0mm
OSR	RAPID	6.0mm
Spare		

## Features

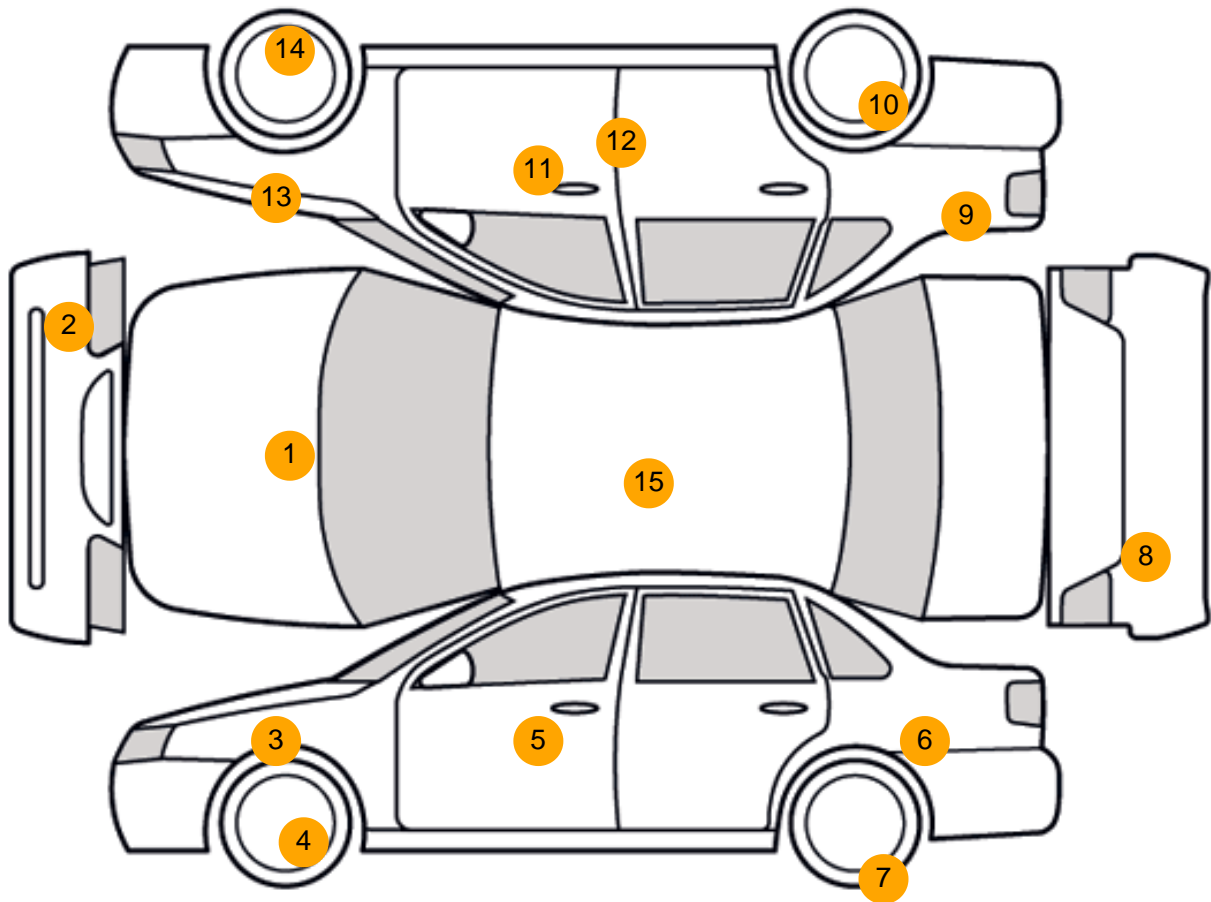
- Bluetooth connection
- Rear wiper
- Electric door mirrors
- Front electric windows
- Steering wheel rake adjustment
- ABS
- Passenger airbag
- Remote central locking
- Cruise control
- Steering wheel mounted controls
- Front fog lights
- Front head restraints
- Steering wheel reach adjustment
- Curtain airbags
- Rear airbags
- Cloth seat trim
- Heated front seat
- Digital radio
- Air conditioning
- Height adjustable drivers seat
- Metallic Paint
- Drivers airbag
- Side airbags
- Alloy wheels
- PAS
- Body coloured bumpers
- Folding rear seats
- Rear headrests
- 3x3 point rear seat belts
- Isofix child seat anchor points
- Central locking

## Photos





## Condition Check



## Damage Photos



1: Bonnet  
Chipped  
Multiple Chips



2: Bumper Front  
Scratched  
25 to 100mm Thru Paint



3: Wing nsf  
Dented  
Over 30mm



4: Wheel nsf  
Scratched  
Over 50mm



5: Door nsf  
Dented  
With Paint Damage



6: Qtr Panel nsr  
Dented  
With Paint Damage



7: Wheel nsr  
Scratched  
Over 50mm



8: Bumper Rear  
Scratched  
25 to 100mm Thru Paint



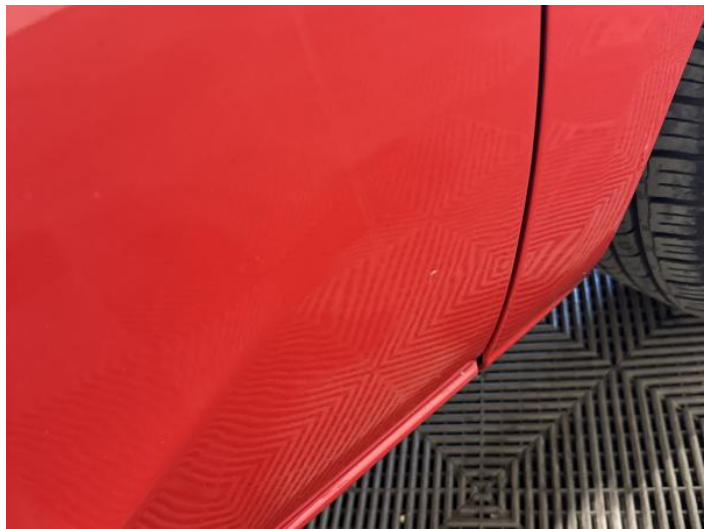
9: Qtr Panel osf  
Scratched  
Over 25mm Thru Paint



10: Wheel osf  
Scratched  
Up To 50mm



11: Door osf  
Dented  
Over 30mm



12: Door osf  
Chipped  
1 To 5



13: Wing osf  
Chipped  
1 To 5



14: Wheel osf  
Scratched  
Over 50mm



15: Roof  
Dented  
Between 10mm + 30mm

**Interior**

<b>Carpet Condition</b>	Average	<b>Upholstery Condition</b>	Average
<b>Seat Condition</b>	Average	<b>Odour</b>	No

**Vehicle Inspection Report**

**Disclaimer**

Photographs, inspection reports and other descriptions are primarily for the use of customers using our LiveBid facility who are not able to attend the sale in person. Those who bid in person must satisfy themselves as to the condition of the vehicle before they bid; we cannot address post-sale issues which rely solely on our reports, descriptions and/or photographs.

Additional fees may apply to some vendors.

Please note buyers rate increase from 01/01/2025

Engine Runs	OK	Gearbox 1st and Reverse Test	OK
Brakes	OK	Clutch Slip Test from Static	OK
Parking Brake	OK	Gearbox Static Gear Selection (engine running)	OK
		No Excessive Smoking	OK
EML light illuminated	Fault	Oil warning light illuminated	OK
Airbag light illuminated	OK	Service indicator light illuminated	OK
ABS light illuminated	OK		
Windows	OK	Radio	OK
		Steering	OK